

## **-OMARAMA GAZETTE –**

**This May 2012 issue is sponsored  
by Scarlett Hydraulic Technology**



Articles to e-mail address [booiman@xtra.co.nz](mailto:booiman@xtra.co.nz) (or to have you name added to the address list)  
Arda Booiman PO Box 207 Omarama 9448. Next cut-off 31 May 2012.  
Gazette due out beginning of June 2012



**For all your Hydraulic requirements**

**Sales, Service, Design, Hose, Fittings and Spare Parts;**



**97 Racecourse Road, Washdyke. Ph 03 688 2902**

## **St Thomas' Church MAY Notices**



**Combined Church Service**

will be on the 27<sup>th</sup> May.

**Lakeside Christian Centre**

every Sunday but the 27th at 3pm.

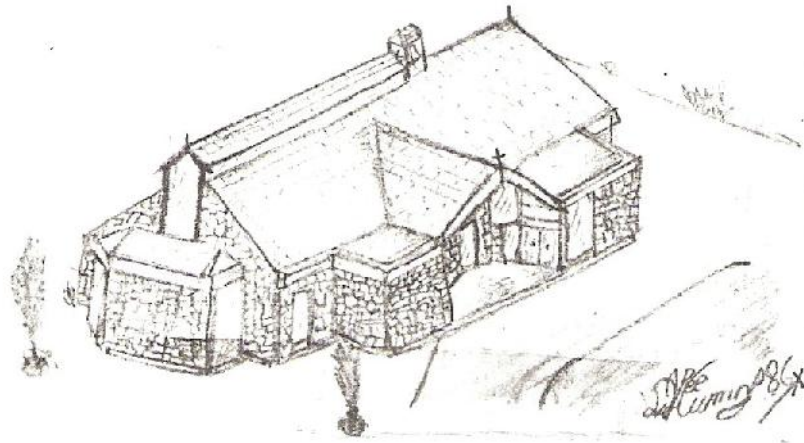
**You are welcome to attend any service  
held at the church.**

Eric Mattock from Kurow Presbyterian church is available for ministry Ph 03 436 0773

**Everyone Welcome**

# St Thomas' Church

## Omarama



To all Omarama residents,

We would like to take this opportunity to acknowledge Jenny Hayles for opening and closing the Church every day and for helping keep it looking spick and span.

Please feel free to pop in and spend some time in the serenity that this beautiful building offers, we do ask that no food be consumed in the Church.

There are Lavender Bags, St Thomas church postcards and Marion Aubrey's book "Omarama Place of Light" available for a donation which goes towards maintaining the Church.

There are also some new community activities taking place regularly;

- Bowls, once a month. May 24th at 10am.
- Bible Study, every fortnight. On Tuesday 8<sup>th</sup> and the 22<sup>nd</sup> of May at 10am, everyone is welcome.
- And the Yoga; Monday nights at 6 pm during school terms.

With the Church being used more often and with Weddings, funerals and Christenings all taking place we are hoping to set up a group called "Friends of the Church" so people don't have to be on the Committee or involved in Church life but they may like to be on a list of people we can call on to help set up or tidy up after an event as we the Committee are small in number and not as sprightly as we would like to think we are.

Please register your interest by phoning Kay Verheul on 4389 538.

Blessings

## YOGA

Mondays, 6pm at St Thomas' Church

**Second term starts 7th May**

**Are you getting less supple as you get older,  
Yoga classes are fun and help keep you fit.**

**Wear comfortable clothing, bring a rug to wrap up in at the end & a yoga mat  
if you have one.**

**Come along, relax and enjoy yourself**

**No experience necessary**

**For more information phone Jemma on 4389 626**

**Or Jan on 4389 703**

## **Ahuriri Issues:- 30 April 2012**

### **Council's Long Term Plan**

From this heading, I can already sense a universal nodding off as most sane people think this is a pretty boring subject!

Unfortunately, though it is a vexing issue for Councillors and Community Board members.

From the LTP summary sent to all ratepayers, those who live in Otematata and Omarama are facing considerable rate increases due to water and sewerage system upgrades. Other influences are massive increases in insurance costs for Councils around NZ, due to the Christchurch earthquakes, lower interest rates received from our term deposits and reduced roading subsidies from NZTA which means that either rates have to rise, or we make cut backs.

From my experience of dealing with these issues, ratepayers are all for making cutbacks so long as it doesn't affect their town services. For instance most people who live in our valley would support Council's suggestion to stop dredging the Oamaru harbour, but those who have boats going in and out, would think very differently.

From the summary, which I think has been quite thought provoking, you will see a number of projects and the costs involved with keeping them going, you will also see where your rates go and what the likely increases are going to be in the future.

Some views we have received already have questioned the wisdom of planning 10 years ahead, when we look at the major events that have occurred in the last two years. I agree with this view entirely and believe the huge amount of staff time that goes into this process is not money well spent. The cost is well in excess of 1 million to produce the plan and the cost of having it audited is in the region of \$60,000. We could do a hell of a lot of worthwhile community projects with this money!

Central government plays a huge part in where our rates go. All of the above issues raised except insurance costs, have been forced upon us by Wellington. I note with interest, comments coming from Govt, that Councils should spend their money only on core business and yet they continually make it more expensive for us to exist because of cuts to roading subsidies and the compulsion to carry out water upgrades that towns neither need nor want.

If you belong to a group or want to attend a presentation of the LTP, please call Council 0800108081 and arrange for a time for us to take you through the issues. We have decided not to carryout road shows because they are expensive and very few people attend them. On Tuesday evening, the Ahuriri Community Board held a presentation in Otematata, as part of its scheduled meeting.

### **Local Government Review**

We expect this to be carried out in September this year and we will learn about what the Governments views are on our level of representation. Currently, we are carrying out a representational review with Council and the Community Boards, Councils are required to carry out these reviews every six years.

### **Whitestone Contracting**

Some of you may be wondering why Council gave the District Roding contract to South Roads rather than WCL. I can confirm that the process that we went through was very thorough and produced a considerable saving in the costs of roading maintenance, which may help offset some of the higher costs to roading in the future.

**Craig Dawson**

**Councillor – Ahuriri**

## SIERRA MOTELS & TACKLE SHOP

OMARAMA AVE OMARAMA- Ph: 4389785  
2012 Duck Shooting Licences now on sale

\$88 – Adult Full Season, \$19 – Junior Full Season

Open every day 7.30 until 6pm.



**Hank Verheul**  
**Builder**  
Quality building

Ahuriri Drive  
PO Box 28  
Omarama  
Mobile 027-221-5192  
Home 03-438-9538

New housing  
Additions, alterations  
Maintenance  
Project management  
Contracting  
Insurance work  
Speciality tiling

*"Quality workmanship guaranteed"*



**Lakes Electrical & Whiteware Services Ltd**  
Market Place, Otematata

The *only* authorised service centre for all  
domestic whiteware and all leading brands in  
the Waitaki Valley.

\* 1.8 tonne digger for hire - dry hire/operator\*

Electrical jobs big or small Lakes Electrical does them all!!

Email: [lakeselectrical@gmail.com](mailto:lakeselectrical@gmail.com)

Workshop (03) 4389650 Fax (03) 4389651 Cellphone 021685818





## Upper Waitaki RSA- 'People helping people'.

On behalf of our local Association I would like to thank the community for all their support. Thank you to the local businesses in Kurow, Otematata and Omarama for allowing us to put our poppy donation boxes in your establishments. **"That's the Spirit"**.

This year's collection was mired with the allegations over where the poppies were made. I thought it is better to clarify a few things, the poppies this year were either assembled by Kilmarnock Enterprises Christchurch or Cash's Australia, both places only assemble, not make the individual items that make up the poppy, and they are all sourced from China. So we can say all poppies purchased are made in China if you want to look it that way. Kilmarnock Enterprises were asked to tender and they did not, only Christchurch RSA and Cash's put a tender in, that is why our Poppies are sourced this year from Cash's, which assembles all of Australia's poppies. At National Conference this October, I will be demanding answers from R Barron from Christchurch, why two days before our annual Poppy Day he puts misleading information into the public spotlight that has hurt our ability to raise funds for our local veterans and widows because of the negative press. In purchasing from the new supplier, we saved the equivalent of one cheque that we would give to one of our widows at Christmas time, which helps them with their expenses at that time of year. It is unfortunate that Christchurch RSA only uses the plight of the IHC workers at Kilmarnock Enterprises as leverage when it is really about a source of income lost for Christchurch RSA.

Like any organisation, we too have to watch our costs if we are to remain as a viable entity within our community, when we only have one major source of income per year for the welfare fund, and being a registered charity, and all the scruples that goes with being a registered charity, all decisions will be reviewed by not only the Inland Revenue but also by the Charities Commission, so the days of cowboys being in charge of the welfare purse at RSA's around the country are over, we have to be smart with our money and we are governed by strict rules. Donations outside Poppy Collection can be tax deductible and be used by us for our general fund which is what pays our Associations costs; all Poppy money is placed in the Welfare Fund and can only be used by returned servicemen and their widows and immediate families. But we are limited by what we can offer because of the amount we collect in our Poppy Boxes.

Membership subs, once the capitation costs to NZRSA and Otago/Southland RSA have been taken out, can be used by us, to pay for our Association costs, that is why membership is so crucial, therefore I am happy to announce that we have had 11 people sign up to join our Association over the last week. I am very grateful for these people joining, their support is crucial for us to remain as an entity within our community, as long as we have your support, then we will be around to look after welfare and ANZAC Services.

Thank you to the children of Omarama School for helping with the ANZAC Service, I have some fresh ideas for the future in how you can help more with ANZAC Day Services. Thank you to all the children in the district who entered our Primary and Secondary Essay Competition. As I explained to one parent whose children attend high school in Christchurch, yes they can enter our competition, if you are a descendent of a our local RSA (North Otago sub branch Kurow in the past now Upper Waitaki RSA) and live in Australia, yes even children from there could enter if they want to. If you are a child who lives in our district but goes to school elsewhere, yes you can participate.

Thank you to the Kurow Hotel and Omarama Oasis for your help with catering on ANZAC Day and to the Omarama Fire brigade for the use of their building on the day. I will be asking members to support all businesses within the district who have supported us; we could not do what we do without your support. If anyone is interested in joining your local RSA or needs help applying for your NZDF Medal, please do not hesitate to contact me at [r.j.riverside@xnet.co.nz](mailto:r.j.riverside@xnet.co.nz) or phone me at 03 4389481 or 0211095297. Please don't hesitate to talk to me with ideas on how to improve our Omarama ANZAC Day Service also; I think we are almost getting it right (as long I remember the order of service).

Michael Blackstock  
President-Upper Waitaki RSA

## New Owner Wanted

The **Kahu Cafe** is a seasonal licensed cafe/restaurant with a unique character. Situated at the heart of the stunning Mackenzie Basin, on the **Omarama** Airfield - one of the world most renowned gliding venues. This established business is an exceptional lifestyle opportunity with limitless possibilities. For more information

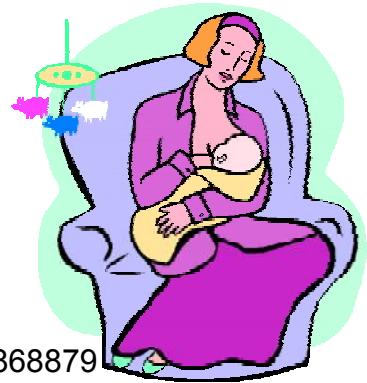
Contact: 027 476 4956 or [kahu.cafe@hotmail.com](mailto:kahu.cafe@hotmail.com)

Kahu Café - POBox 145 - Omarama - 9448

### Breastfeeding Works!"

Having a baby? Already breastfeeding a baby of any age? Then contacting a Volunteer breastfeeding counsellor will be positive for you. These counsellors are mums, who have been trained to support breastfeeding mothers. "Breastfeeding Works!" counsellors are able to help you with the ups and downs of breastfeeding. No question is too small! There are four local Breastfeeding Works counsellors local to Twizel and Omarama. We are just a phone call away.

Sarah 021 326 909, Liko 0272 497 555 or Deidre 0276868879



### **Ahuriri Community Board News**

The Waitaki District Council's Long Term Plan 2012-2022 is available in a paper form "Tomorrow's World"

These are by the Post Office Boxes outside Omarama Four Square.

Submissions on the plan close on Friday the 11th May.

#### **HAVE YOUR SAY!**

Omarama is facing a large rate increase- up to 20% in some cases

Submission forms on back of "Tomorrow's World" or can be downloaded from WDC website.

Next meeting of Ahuriri Community Board will be held at Otematata Lakes Centre at 7.15pm on Tuesday 6th June, 2012.

Regards,

Cathy Ferguson. Ph: 03 4389785 Fax: 03 4389789 0800 743 772

Available from Totara Peak Gallery- Sally and Tony Fodie

# Riverside Station

## Omarama

### 1924 – 2002



Written by  
R M Blackstock

# The Ohau Conservation Trust

presents for the first time in New Zealand :

Klaus Feichtenberger's award-winning environmental documentary film

## CHERNOBYL'S RADIO ACTIVE WOLVES

There have been massive increases in large carnivores in the nuclear wasteland around Chernobyl, creating a complete ecosystem and one of Europe's largest wildlife sanctuaries - yet it's radioactive.

Where human can't live, nature is rebounding, and somewhere in this vast nuclear wilderness, there are packs of radioactive wolves, living in an archaic structure that has vanished from other parts of Europe.

Here they can thrive, here they can live like real wolves in large packs as they used to. Before 1986, the zone was heavily farmed and populated, and wolves were scarce. In less than 25 years there has grown to be an estimated 300+ wolves making the most of this deceptively beautiful landscape. But are they mutants? Have they been affected by nuclear contamination after the 1986 explosion which released 100 times more radio-nuclides than Hiroshima and Nagasaki combined?

Klaus Feichtengerer's 50-minute documentary has recently won Best Wildlife Habitat Programme Award at the prestigious Jackson Hole Wildlife Film Festival, and has just won another award in China.

Special permission has been obtained from the BBC for the Ohau Conservation Trust's after-dinner guest

Speakers Ruth Dalley and Lance Shaw to show this film for the first time in New Zealand.

Lance and Ruth ran Fiordland Ecology Holidays, one of the first eco tourism small businesses in New Zealand, and took tours of the fiords in "Breaksea Girl." They were deeply involved in the Fiordland No-Fishing accord.

The Trust's fund raising dinner is to be held at the **Lake Ohau Lodge on Saturday 12 May 2012.**

The cost for dinner plus a donation to the Trust is \$65. There is no additional charge for the film.

Numbers will be limited by how many can be seated at the Lodge, so please book now if you want to be sure of a place. Please make bookings direct with the Lodge, email <[reservations@ohau.co.nz](mailto:reservations@ohau.co.nz)> or phone (03) 4389 885.

The Ohau Conservation Trust is a registered charitable organisation.

Check out our work at <[www.ohau.org.nz](http://www.ohau.org.nz)>

### **Wanted:**

Bob Grindley is looking for a 7.2m x 7.2m garage timber construction for removal or already dismantled to purchase.

Karaka green roof, spoutings would be good, however not priority.

I do not need exterior cladding, windows, doors, but prepared to look at anything. Please e mail me pictures, information etc to [bgsturgis1@yahoo.com](mailto:bgsturgis1@yahoo.com)



## MCGARTLAND PLUMBING

Call John

PH: 0220 381 065

AH: (03) 435 3243

EMAIL: [bjmcart@xtra.co.nz](mailto:bjmcart@xtra.co.nz)



CERTIFYING PLUMBER AND DRAINLAYER

NO JOB TOO SMALL



**Mobil**

Ph/fax 03 4389834 Email; [omarama.mobil@xtra.co.nz](mailto:omarama.mobil@xtra.co.nz)

## Omarama Service Station 2009

Are you sick of paying the high price of Fuel!!  
Come in store and see Terry and see how he can try to save you  
MONEY!!



**ATM machine available in store now**

**Omarama Service Station 2009 Ltd is your local**



**Road side assistance provider**



Conveyor available for pre-lamb capsuling and vaccinating

Lice and flydipping

Phone Chris Chave on 027 211 2859 or after hours on 03 689 7000

### House to rent

3 bedrooms, fully furnished. Just \$200 per week, flexible terms

Call 03 4348793 or call/text 021 259 2698

### For Sale

Dry Quality firewood for sale \$200 per load / 3.5 square metres

Please phone 027 823 7865 or 03 4389417 or 03 4389 666

### For Sale

Small Bales of Pea Straw for sale. \$4/bale pick up. Ph. 027 272 9578.

# GLENCRAIG'S CLOTHING

Winter Stock Specials of Columbia arriving this week - vests, jackets, hats,

accessories etc.



We have some great deals coming in at 30% off RRP!

**TUSSOCK CREEK** - some great Moleskin SECONDS in the heavy duty material for only \$75 (usually \$110 - \$129+)

Also - **DOOSH** - Straight Leg Trousers, Merino Coats, Dresses and Tunics - in some great fashion styles.

**BOBUX** Specials - we are continuing the winter season with **25% off** all Bobux!

**MEN'S WINTER JERSEY RANGE** - LOTS OF NZ MADE, PURE WOOL AND WOOL MIX JERSEYS

**UNDER \$100**

Shell Shoes & Blitz Shoes & Boots back in stock

AND new leather Timber shoes for MEN

Plus assorted sheepskin slippers & boots

ALSO: New colours in the Sloggers Rain Shoes & Gumboots!

e-mail: [info@glenccraig.co.nz](mailto:info@glenccraig.co.nz) [www.glenccraig.co.nz](http://www.glenccraig.co.nz) Main Road, Omarama Ph **4389 816**

## Electrical Warrant of Fitness:

**Paul Mander- Mobile Electrician and Electrical Inspector**

**\$60 GST inclusive**

**available: 1-3 May 2012 phone 027 4165310**



It is with some concern I see that there has been a number of shooting fatalities and close calls in the last few months.

I thought with the upcoming Duck shooting season fast approaching (5 sleeps at time of writing) that it was a good time to remind those of you that use firearms of the 7 cardinal rules.

If you have a firearms licence and before you read any further; I challenge you to see how many you can remember off hand. 7 out of 7? Well Done!

These rules are also for air rifles especially with some of them being as powerful as a .22.

**1. Treat every firearm as loaded**

Check every firearm yourself.

Pass or accept only an open or unloaded firearm.

**2. Always point firearms in a safe direction**

Loaded or unloaded, always point the muzzle in a safe direction.

**3. Load a firearm only when ready to fire**

Load only the magazine after you reach your shooting area.

Load the chamber only when ready to shoot.

Completely unload before leaving the shooting area.

**4. Identify your target beyond all doubt**

**Movement, colour, sound and shape can all deceive you.**

**Assume colour, shape, sound, and shape to be human until proven otherwise**

**5. Check your firing zone**

THINK: What may happen if you miss your target? What might you hit between you and the target or beyond?

Do not fire know others are in your firing zone

**6. Store firearms and ammunition safely**

When not in use, lock away the bolt, firearm and ammunition separately.

Never leave firearms in a vehicle that is unattended

**7. Avoid alcohol or drugs when handling firearms**

Good judgement is the key to safe use of firearms.

I probably don't need to remind anyone that if your going to have a few quiets in the Mai mai (once your guns have been put away of course) that you don't drink and drive. And of course we all know pf people that have done the right thing and not driven that night but get picked up the next morning when they think they are sober, but aren't, so be aware...12 hours between your last drink and driving will see you right.

It is getting into the quiet time now so they tell me, so there will be a lot less people around....which of course brings opportunities for the criminal fraternity. So please keep an eye out for anything suspicious, try to remember registrations / descriptions best as you can, write it down asap and give me a call or if an emergency 111. Which reminds me, if you see something happening i.e A burglar climbing into a window, don't muck around trying to ring me personally, just ring 111, they have all my contact details and best points of contact.

I see we have new warning signs installed on SH8 on the Lindis side of the bridge...not exactly what I was after, it is too early at this stage to see if they are actually working, methinks not but we will wait and see. I am still wanting the flashing signs, and will continue working with NZTA

I have completed the questionnaires I spoke about last month so please once received, take the time to fill them out, or to light the fire (but you can't moan about the police if you do that).

For those of you who want to do it electronically the questions are simple.

1. Name
2. Address
3. How are you associated with the area (resident/worker/other specify)
4. What are the specific issuses about safety in your local area that you think we should know about

When answering Q4 please ensure you mention **location/dates-times/ frequency/ how it affects you/ others...and suggested solutions.**

These questions are all about the new way Police are trying to better serve the community by prevention first, rather than shutting the barn doors once the horse has bolted type policing. So your input is required.

That's it, stay safe.

Nayland Smith (*Bean*) | Sole charge Constable NSJ641 | Omarama

 New Zealand Police | Po Box 101, Omarama

 (03) 4389 559 | Station Cell 027-2304946 | 

Nayland.smith@police.govt.nz |  [www.police.govt.nz](http://www.police.govt.nz)

&



***K & A DESIGN***

***SHARON S DESIGN***

INVITE YOU TO VIEW THEIR RANGE OF DESIGNER WOMENS  
FASHIONS & JEWELLERY

AT

MACKENZIE COUNTRY INN TWIZEL.

THURSDAY 3<sup>rd</sup> MAY 2012

2pm – 9.00pm

FRIDAY 4<sup>th</sup> MAY 2012

9am – 2.00pm

We have an exclusive range of Designer Coats, Jackets, Vests,

Merino Dresses, Tunics etc

Sizes range from 8 – 20.

The ever popular Vassalli Pull On Jeans for wearing under your tunics

These come in a variety of colours. These come in a variety of colours. Also  
4way stretch Jeans. Variety of Sizes.

## **New innovative traps profiled in Twizel**

You are invited to hear about the new innovative automatic trap for catching stoats and rats.

They are powered by a CO<sub>2</sub> cannister and can reset themselves up to 24 times.

Stu Barr from Goodnature Ltd will present this new exciting addition to the trap family,  
and Darren Peters from DOC will give a stoat and rat trapping best practice update.

**When:** Saturday 19 May, 2012 at 1 pm

**Where:** Twizel Event Centre, community room

For further information, please contact Ursula Paul, Twizel DOC office 03 4350802  
or [upaul@doc.govt.nz](mailto:upaul@doc.govt.nz)



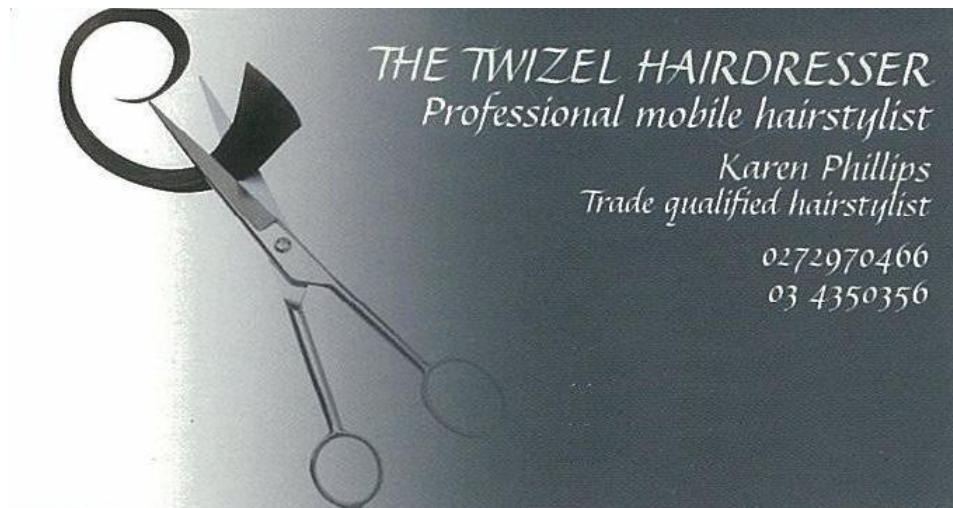


# *Valley Beauty Otematata*

*Valley Lodge Kowhai Place OTEMATATA Waitaki Valley*

*Phone or txt Anita on 0274 996620 Home 03 4387800*

*For full Beauty Therapy Treatments Strictly By Appointment.*



**Need some time just for you**

**Spoil yourself**

Book in for a massage and Hot Tub combo or try a Hot Tub and Sauna to really get you warmed up, you adjust the temperature of the water.

**11am till 10pm, 7 days**

*To Book Phone*

**03 438 9703**

**HOTtubs**  
omarama



**NOW WORKING IN THE OMARAMA AREA**

**OUR SERVICES INCLUDE:**

- Lawn & section mowing
- Hedges/shrubs/pruning
- Weed spraying
- House & window cleaning
- Gardening
- Painting
- Rubbish removal
- Chimney cleaning
- Winter pruning – fruit trees/roses etc.

UNDER NEW OWNERSHIP

**ANDREW DAVIS 03 435 0261 021 147 3095**

**WAITAKI SPRAYING LTD** is available now for all your new seasons spraying requirements. We have two 4WD boom trucks available equipped with GPS. We also have a "Quick Spray" remote controlled self retracting reel for horehound, gorse, broom etc. We are in your area regularly. Phone now to book your spring spraying requirements. Chris Horn 03 4312 857 021 270 2809



**Club Med Omarama & Dew Drop Inn Holiday Rentals.**

We are now open for short term – and longer holiday stays. The former Medical centre has been nicely renovated as a two bedroom unit with a lovely outdoor area. It sleeps four and there is lots of room for boats etc in the large fenced section. Rental for this property begins at \$95 a night. Dew Drop Inn studio units are also available. These are suitable for singles or couples- Double Beds. They share a bathroom and rent is \$65 a night. One nighters welcome.

Both units have cooking facilities, television and fresh linen is supplied weekly. There are special weekly rates.

For bookings phone Sally & Tony Fodie- at Totara Peak Gallery ph 03 4389757, home 03 4389767, 0272514380. Or email us at [fodie@xtra.co.nz](mailto:fodie@xtra.co.nz). Call at Totara Peak Gallery for viewing



**For all your Hydraulic requirements.**

**Sales, Service, Design, Hose, Fittings & Spare Parts**

**97 Racecourse Rd, Washdyke. Phone 03 688290**

**[www.scarlett-hydraulics.co.nz](http://www.scarlett-hydraulics.co.nz)**



**Poppies Café 1 Benmore Place**  
**Twizel. Phone: 64 3 4350848 Fax: 64 3**  
**435 0324**  
**Email:**  
**admin@poppiescafe.com**  
**[www.poppiescafe.com](http://www.poppiescafe.com)**



poppies cafe & restaurant

Sit, relax and unwind at Poppies Café, Twizel New Zealand, and enjoy stunning food and fabulous coffee in a warm and friendly atmosphere. Poppies Café is a contemporary, funky fully licensed restaurant where the emphasis is on high quality café food using organic vegetables from their own gardens and the finest produce from local growers wherever possible. Poppies Café has extensive gardens and alfresco dining with superb views of the Southern Alps, and plenty of parking. Poppies Café is the ideal spot to dine at a big table with a group of friends, or just sit back, relax and enjoy a leisurely coffee in hassle free and welcoming surroundings.

GREAT SERVICE GREAT FOOD GREAT COFFEE

## **DEIDRE SUTHERLAND** **BEAUTY THERAPY**

### **QUALIFIED PROFESSIONAL BEAUTY THERAPIST**

FACIALS - REVITALISING & SPECIALISED TREATMENTS WAXING -  
BODY & FACIAL,  
EYEBROW TINTING, EYEBROW SHAPING MANICURES ,PEDICURES  
SPRAY TANNING (SUN FX SYSTEM)  
MAKE UP

PROFESSIONAL & NATURAL SKIN CARE PRODUCTS

**Working from home Tuesday's and Wednesday's**

For an appointment please phone or text Deidre 027 686 8879

**Big Sky**  
BED & BREAKFAST  
**Kay & Hank Verheul**  
10 Ahuriri Drive, Omarama, New Zealand

Phone +64 3 438 9538  
Mobile 027 489 5149

Email [hankay@xtra.co.nz](mailto:hankay@xtra.co.nz)  
[www.bigskybnb.co.nz](http://www.bigskybnb.co.nz)

**Ahuriri Motels**

State Highway 83, Omarama  
NZ FREEPHONE: 0800 438 945

*FANATICAL SUPPORTERS OF YOUTHLIDE OMARAMA*

**Our Offer**

- 14 ground floor units
- 2 studios sleep 2
- 2x2bms sleep up to 5
- 1x3bms sleep up to 6
- Quiet location, 500m to shops, hotel, tennis courts & Airfield.
- Pets by arrangement.
- Families welcome
- Rates on application.

**Your Hosts**  
**Tom & Rose Shields**



# **BLACK FOREST HELICOPTERS**



**An Experienced Pilot  
And Stockman  
Operating a  
Robinson R22**

**Servicing the  
Wider Mackenzie Basin**

*Including*  
**The Hakataramea and  
Waitaki Valley**

**Competitive Rates  
For Your  
Pest Control  
and  
Mustering Requirements**

**Enquires to: Ben on 0276543760  
or email : [black.forest@farmside.co.nz](mailto:black.forest@farmside.co.nz)  
[www.blackforeststation.co.nz](http://www.blackforeststation.co.nz)**