

-OMARAMA GAZETTE –

This November 2012 issue is sponsored in memory of

Christian Blackstock & Joan Wytenburg



Articles to e-mail address booman@xtra.co.nz (or to have you name added to the address list)
Next cut-off 30 November 2012. **Gazette out 1 December 2012.**

Remember if you want to get your Xmas message out ,to send it in by 30 November 2012

-There will be no January Issue-

St Thomas' Church

Services for November are as follows



Combined Church Service will be on the 25th with Eric Mattock Kurow
Presbyterian Minister

Lakeside Christian Fellowship services will be on the
4th, 11th and 18th November.

All services start at 3pm & everyone is welcome to attend any service.

Clergy contacts for Omarama:

Rev Eric Mattock - Kurow Presbyterian Church Ph 03 436 0773
Rev Ken Light- Anglican Vicar for Waitaki Vly/North Oamaru Parish
Ph 03 4370064

Community Board Report

Next meeting of Ahuriri Community Board will be held at St Thomas's Church, Omarama Ave on Monday 26th November at 3.15pm. Meeting starts with public forum.

Cathy Ferguson- Chair Ahuriri Community Board.

Omarama has a Justice of the Peace.

Omarama Justice of the Peace

Bill Gordon J.P. Phone 4389433

Omarama Volunteer Fire Brigade

The Brigade has attended three calls for the month of October. A medical, vehicle accident up the Lindis Pass and a car fire at the Challenge Garage.

Unfortunately due to a Bereavement Guy Fawkes is postponed until Friday evening 9th November

Howard Williams Chief Fire Officer

The Annual General Meeting of the Omarama Residents Association was held on the 18th October..

In part of his report, outgoing Chair Bill Gordon commented;

"This association has been operating for three years now and looking back, has achieved a quite outstanding record of progress toward our major goal of an enlarged and upgraded community facility for the area. That we have not commenced the physical work does not detract from the excellent position we are in to commence the project. Many communities have taken much longer to reach the stage we are at for similar projects.

I am confident that at the next Annual General Meeting we may well be in a new facility or viewing building progress.

This committee can be proud of what we have achieved and also our involvement in other projects such as the National Radio repeater and as fund guardian for other projects shows both the need and recognition the community has for this Residents Association".

There was great support for the association at the meeting with 18 nominations for the 12 committee positions as limited by the constitution approved by Internal Affairs.

The unsuccessful nominees will be very welcome, along with any other members of the community to attend meetings and contribute to the Association's work.

The new Chair is Craig Dawson, and most previous committee members have been re-elected. Special mention was made of the contribution Glenys Dawson has made in the involved task of completing successful funding applications. The Association's application for Lotteries funding will be considered again in November and a positive outcome will see the project ready to commence.

Omarama Service Station 2009 Ltd.

AMAZING NEWS

Do YOU want to pay the same price of fuel as AUCKLAND ??

AS of the 1st of October come instore and speak to TERRY and he can tell you how.

It's simple and easy!!

ASURE SIERRA MOTELS & TACKLE SHOP OMARAMA AVE, OMARAMA.

NEW SEASON FISHING LICENCES NOW FOR SALE:

Full Season Adult \$120 Full Season Junior \$24

24 Hour Adult \$23.00 24 Hour Junior \$7

Family Licence \$156.00

Family Licence \$156.00

Have you visited our tackle shop and surveyed the wide range of: hooks, swivels, lures, flies, leaders, knives, nets, tackleboxes, weights, waders, & boots?



Lower Ahuriri River opening this Saturday 3rd November.

Yoga / stretch class

Mondays, 6pm at Countrytime Hotel

Third term started on Monday 29 October

COST; \$60 for 6 weeks this term.

Are you getting less supple as you get older,
Yoga classes are fun and help keep you fit.

Wear comfortable clothing

Come along, relax and enjoy yourself

No experience necessary

Tutor; Kate White

For more information phone:

Jemma on 4389 626 Jan on 4389 703



"Frugal Country and Hard on the Boots;

a history of the Lake Ohau valley"

by Eileen McMillan

508 pages, hard cover, with bibliography, index, maps, and photographs historic and modern.

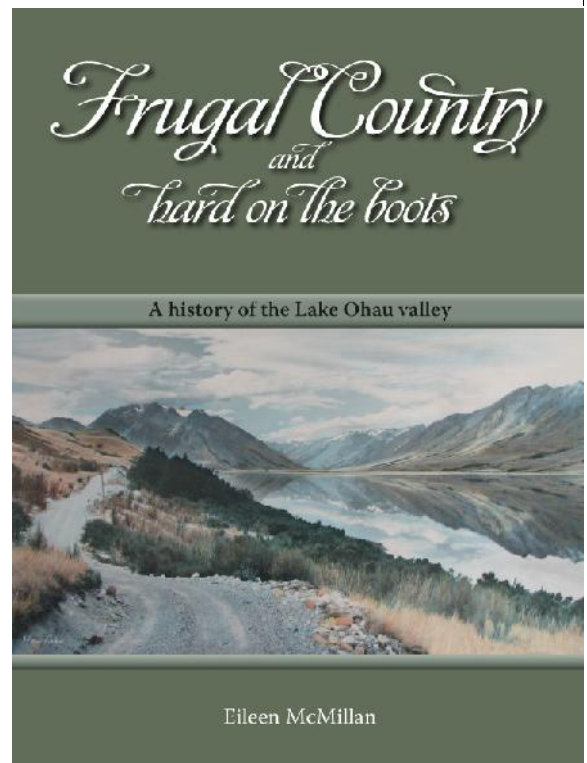
Secluded and beautiful, little known by most New Zealanders, Lake Ohau and its great glacier-formed valley was, to ancestral Maori, part of the rich breadbasket of the South Island's interior, where in seasonal excursions they would harvest a great range of roots, birds and eels.

From 1857 Europeans settled in and around the area, and by the end of that century the vast Benmore Station, at its peak some 310,880 acres, encompassed most of the valley.

In 1916 Benmore Station was broken up, similarly Ben Ohau Station on the other side of the lake in 1920. The high country stations bordering the lake that evolved from those properties have all been researched. Long term high country families and their descendants as well as current owners tell their stories with facts and anecdotes. Station workers, musterers, hunters, trampers, skiers, fishing enthusiasts and holidaymakers have contributed.

The establishment of the Lake Ohau Lodge and Ski Field by the Wigleys in the 1950s and their later development by subsequent owners, the Lake Ohau Alpine Village in the 1980s, and the fishing, skiing, station and mountain huts around the lake and along its great rivers the Hopkins, Huxley and Dobson, are all described.

Frugal Country is available from 5 November from Eileen McMillan, PO Box 102, Twizel 7944, South Canterbury. Phone (03) 438 9798 Email <eileen.mcmillan@xtra.co.nz> \$170, plus \$10 postage & packing. Free delivery to Omarama street addresses.



The Kurow Rugby Club's premier team is travelling to northern New South Wales in march 2013.

There is a touring party of 30 going, who are looking for fundraising to do over the coming months.

Any of those jobs you have been putting off doing, get some of these boys in to help.

There is someone in your area to coordinate it for you, just call one of them from the list below.

Thankyou.

Wallace Milne 0273215043 Michael Patterson 0272807391

Marshall Smith 0211800745 Blair Corson 0212444165 Tim Larkin 021878394

Oasis Pizza Menu

“Dine in or Takeaway” hours
Monday – Wednesday 7.30am till 5pm
Thursday – Sunday 7.30am till 7.30pm
(03) 4389 722

Hawaiian-

Ham, Pineapple, Cheese

Chicken & Cranberry Sauce-

Chicken, Brie Cheese, Peppers Cashews nuts and Cranberry Sauce, Cracked Pepper, with a fine blend of Cheeses as a top garnish.

Italian-

Pepperoni, Bacon, Red Onions, Mushrooms, Tomatoes, Cracked Pepper, & three Cheese Blend.

Oasis Special-

Tomato, Onion, Bacon, Ham, Herbs, Green Peppers, Mushrooms, Cracked Pepper, and three Cheese Blend.

Vegetarian-

Olives, Mushrooms, Peppers, Tomato, Herbs, Cracked Pepper, with our famous three Cheese Blend & Feta Cheese.

Salmon-

Salmon, Red Onion, Capers, Spinach, Creamed Cheese Cracked Pepper

FREE LARGE CHIPS WITH EVERY PIZZA

**All our pizzas are made fresh to order, and will take approximately
20 MINUTES TO SERVE**

“Our bar is open for refreshments while you wait.”

AEROBICS FITNESS CLASSES

Would you like to be part of this group, we will get together from 4 October 2012, every Thursday night from 6pm till 7pm at the Countrytime Hotel.

Come and have fun, release the stress, boost yourself.

Your body needs to be fit.

Bring your own towel or exercise mat and come and join in the fun.

Any gold coin donations will be going to Omarama School Fundraising Committee. Any queries please contact Suzette du Plessis, 027 789 5930.

Rabbit Control Shooting of rabbits will be occurring on our property, south side of Omarama Village over

Omarama Police will be notified prior to each shoot.

Paul & Lynda Martin

Omarama Golf Club Future and Notice of AGM.

The Golf Club advise that the incumbent President (Russell Eddy) has resigned due to work commitments which now have him spending considerable time on the road away from Omarama .

Russell has been an extremely valuable and important cog in the wheel that keeps the Golf Club in existence. It has now come to a point where the wheel only has a few cogs to keep it turning and some decisions will soon have to be made as to the future of the Club.

There is presently 11 local members out of a total of 32, of which there is only half of the local members actively participating in day to day activities of the club.

There is always a lot of positive support from the many visitors, crib owners and campers (quite a few of whom say "If there wasn't a golf club they would be going elsewhere". These comments are a great inspiration to the few that are presently striving to keep the club going. These members are not just golfers, they also believe it is something extremely worthwhile for the Community. It is an opportune time now for the Community to show it thinks the same, "a bit of positive reinforcement goes a long way."

There have been many people over the years who have put their heart and soul into one of the best (if not the best) asset Omarama has but with dwindling local numbers combined with a fair bit of community apathy it is maybe time to consider putting it to rest.

The club continues to survive financially but with all the work being done voluntarily (most of whom have full time jobs not to mention an "aging" issue), this is also becoming a bit of a problem.

Shortly there will be an AGM (Monday 3/12/12 - 7pm at Golf Club)where maybe some of the fence sitters who do wish to see the club continue, could put their hands up and show a bit of support. The meeting will be open to the public so anyone with an interest in keeping the club going can voice their opinion or offer assistance.

Otherwise "forever hold your peace."

The Committee Omarama Golf Club

Note: for daylight saving Twilight Tee off Wednesday 6pm and Saturday Golf now 1pm tee off.

Oamaru Swimming Club – National Swimmers Fundraiser:

Dani and Alana Walsh are selling the following Quality Bakers goods. This will be a long-running fundraiser so you can order at any time – it will definitely still be offered at shearing season. We will need the order/money at least a week before you need the goods. They are selling the following:

Sausage Rolls	36 in box	\$22.00
Mince Savouries	50 in box	\$28.00
Bacon & Egg Savouries	50 in box	\$28.00
Potato Savouries	32 in box	\$20.00
Mixed Savouries	50 in box	\$30.00
(mince, potato, bacon & egg)		
Ernest Adams Long Wrapped Sausage Rolls		\$1.00ea

Please phone Michelle Walsh on 438-9834 (Mobil Garage), 438-9752 (home) or 027 358-6654 (mobile) if you would like to place an order.



Project River Recovery from the Department of Conservation Te Manahuna Area Office in Twizel gives notice of its intention to apply herbicides to control weeds in riverbeds and wetlands of the upper Waitaki river as follows:

Ahuriri river: Spot spraying crack willow, Russell lupin, broom and gorse with glyphosate from January to March 2013. Clay Cliffs to Longslip Ck, isolated regrowth patches, duration 0.5 days, aerial application; Ben Avon Station to Canyon creek, scattered trees and isolated stands, duration 1-2 days, aerial application; SH8 to Lake Benmore scattered regrowth, duration 3-4 weeks, handheld methods.

Fork Stream Braemar Road to Tekapo River: Spot spraying Russell lupin regrowth with glyphosate using handheld methods from October to November 2012, duration 3-4 weeks.

Godley River: Spot spraying Russell lupin, broom and gorse regrowth with glyphosate using handheld methods from November 2012 to March 2013, duration 3-4 weeks.

Lower Ohau River: Spot spraying broom, crack willow, lupin regrowth with glyphosate using handheld methods from October to November 2012, duration 4-5 weeks.

Mistake Creek: Spot spraying Russell lupin regrowth with glyphosate using handheld methods from November 2012 to January 2013, duration 2-3 days.

Tasman River: Spot spraying Russell lupin regrowth with glyphosate using handheld methods from November 2012 to January 2013, duration 1-2 months.

Contact for enquiries: Chris Woolmore, Te Manahuna Area Office, Twizel ph 03 4350802

MCGARTLAND PLUMBING

Call John

PH: 0220 381 065

AH: (03) 435 3243

EMAIL: bjmcart@xtra.co.nz



CERTIFYING PLUMBER AND DRAINLAYER

NO JOB TOO SMALL



Mobil

Ph/fax 03 4389834 Email: omarama.mobil@xtra.co.nz

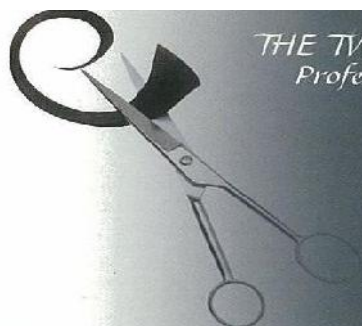
Omarama Service Station 2009

Are you sick of paying the high price of Fuel!!

Come in store, see Terry and see how he can try to save you

MONEY!!

Omarama Service Station 2009 Ltd is your local **AA** Road side assistance



THE TWIZEL HAIRDRESSER

Professional mobile hairstylist

Karen Phillips

Trade qualified hairstylist

0272970466

03 4350356

Breastfeeding Works!"

Having a baby? Already breastfeeding a baby of any age? Then contacting a Volunteer breastfeeding counsellor will be positive for you.

These counsellors are mums, who have been trained to support breastfeeding mothers. "Breastfeeding Works!" counsellors are able to help you with the ups and downs of breastfeeding. No question is too small! There are three local Breastfeeding Works counsellors local to Twizel and Omarama. We are just a phone call away.

Sarah 021 326 909, Liko 0272 497 555 or Deidre 0276868879



Enjoyed a HOTtub lately?

Come on in for a Soak

The ideal way to relieve aches and pains.

Join our locals Tub Club.

Phone 4389 703 to book your session

HOTtubs
omarama



OMARAMA'S PREMIERE

VINEYARD RESTAURANT • TOURIST ATTRACTION





Restaurant



Wine / Bar



Walking Track



Playground



Fish Feeding

1 Pinot Noir Court Omarama NZ
Ph: (03) 438 9550
For more info look up: www.ladybirdhill.co.nz

The value of groundwater

Groundwater is hugely important in Canterbury for drinking water, for irrigation and for stock water.

Environment Canterbury monitors hundreds of wells as part of its ongoing work to better understand the region's groundwater resource and to meet our obligations under the Resource Management Act.

Our work relies on the goodwill and co-operation of landowners as many of the wells we monitor are on private land.

The 10 zone committees – set up under the collaborative Canterbury Water Management Strategy to develop community-led solutions to water management – are also calling for more information on groundwater.

These requests will in many cases require additional monitoring from wells. Over the next few months, Environment Canterbury will be contacting some well owners to help fill gaps in the monitoring network.

Why we monitor groundwater

Canterbury's water resources are under pressure. The demand for irrigation and other uses continues to increase, and land use intensification threatens water quality.

We need to monitor groundwater as part of developing better water management systems in Canterbury, which will help address water quality and quantity issues, and assist with council planning processes.

Our understanding of the groundwater resource informs water management zone committees, as well as regional and catchment plans which provide the framework for allocating water to applicants via resource consents.

Upper Waitaki Zone Committee



Upper Waitaki Zone Committee groundwater recommendations

The Upper Waitaki Zone Committee was established in early 2011 as part of the Canterbury Water Management Strategy (CWMS).

Its job is to find local solutions for water issues aligning with the Strategy's vision of gaining maximum benefits from water within an environmentally sustainable framework.

The Upper Waitaki Zone Implementation Programme (ZIP) was accepted and endorsed by councils in mid-2012 as the basis for the design and realignment of council work and planning programmes for fresh water.

The ZIP contains more than 50 recommendations to the Mackenzie and Waitaki district councils, Environment Canterbury, and other stakeholders.

Statements in the ZIP relating to groundwater are:

Nutrient, effluent and water management are key components of the successful implementation of the CWMS for the Upper Waitaki zone.

The committee has identified a need for more understanding of nutrient and flow dynamics in the zone. It has also identified a need to 'join the dots' with a range of monitoring that is taking place in the zone, along with recommendations for new monitoring sites.

Aspect 2.5

Progressively establish nutrient limits for other waterways, as longer-term monitoring information becomes available.

Aspect 2.10

Establish, continue or extend ongoing programmes of research and monitoring to assess the effectiveness of environmental flows and nutrient limits.



If you would like to find out more about the groundwater resource in your area please contact Environment Canterbury customer services on 0800 EC INFO or visit www.ecan.govt.nz

Everything is connected

Facilitating sustainable development in the Canterbury region

www.ecan.govt.nz



A WORD FROM THE CHAIR



The Upper Waitaki Zone Implementation Programme (ZIP) was received and endorsed by Environment Canterbury, and the MacKenzie and Waitaki District Councils, earlier this year.

The ZIP contains around 50 recommendations on how to implement the Canterbury Water Management Strategy (CWMS) in the Upper Waitaki.

The vision of the CWMS is to enable present and future generations the greatest benefit from the water resource within an environmentally friendly sustainable framework.

The zone committee worked collaboratively with stakeholders and community members to develop the recommendations for water management that are acceptable to a wide range of interests.

It includes recommendations on five key areas; Water nutrient and effluent management; Waitaki Catchment Water Allocation Regional Plan including environmental limits and development; Braided Rivers; Biodiversity; Prosperity.

Monitoring

One of our top priorities is improving the monitoring in our zone so future decisions are made using the best possible data.

To achieve this we have identified gaps in the current monitoring and are recommending new monitoring sites.

We are also recommending that monitoring be integrated between various agencies, including consent holders, so that the community does not pay twice.

Look out for new ground and surface water quality monitoring sites being installed before Christmas. The data these provide are critical for future recommendations the committee will make on catchment load limits.

Co-opting to the zone committee

The zone committee is looking for more local knowledge to help it with its water management decisions. We have decided to co-opt someone to the committee for the rest of the term (until December 2013).

We are looking for someone from the Tekapo side of the MacKenzie Basin with knowledge of, and connections to, the rural community.

If you want to be involved in local water management and you are able to work collaboratively and balance a wide range of interests in water – please contact our facilitator.

More information and a schedule of meetings for the rest of the year can be found at www.ecan.govt.nz/canterburywater.

Get involved in local water issues

All Zone Committee meetings are open to the public and include a slot for members of the public to contribute if they wish.

The next meeting is at the MacKenzie Country Inn Twizel, Friday November 16th from 9:30am. Agendas will be available at www.ecan.govt.nz/canterburywater.

Barry Shepherd – Chair

Immediate Steps biodiversity funding

The committee is always on the lookout for local biodiversity projects that would benefit from funding assistance. If you know of, or have a worthy project, please contact facilitator Nic Newman or visit www.ecan.govt.nz/biodiversity and check out the funding section where you will find an on-line funding request form.

Immediate Steps is a five year \$10 million biodiversity protection and restoration programme that was launched in 2010 as part of the CWMS. The zone committee is responsible for the local implementation of the programme.



For further information contact:

Nic Newman

Upper Waitaki Zone Committee Facilitator

027 4562259 | nic.newman@ecan.govt.nz | 0800 324 636

GLENCRAIG'S CLOTHING

Check Out our new Spring Stock!

New supplies in today of Blitz Summer Shoes including the gorgeous new **SMILE** shoe and stocks of **Arcopedico** – the lightest most comfortable Portuguese made summer shoe at a great price!

Plus lots of jandals, sandals and flip flop styles

Columbia – Breakaway – Aertex – Huski –
CCC Canterbury
Speights Singlets & Jandals

Keep an eye on our Facebook page for photos too!
(You can link through our website www.glenrcraig.co.nz or find it directly.

Also – Boo Radley & Ice Express - gorgeous one-off summer fashion styles for the ladies!

Contact us on 03 4389 816 or email info@glenrcraig.co.nz or glenys.craig@xtra.co.nz
www.glenrcraig.co.nz Phone 03-4389 816



What should our PARKS & RESERVES be like?

- * How should they be **MAINTAINED?**
- * Should they be **SMOKE-FREE?**
- * Where's the best place for a **DOG EXERCISE PARK?**
- * What sort of **ACTIVITIES** should we allow in our parks, gardens & sportsfields?
(e.g. Do we want **COMMERCIAL ACTIVITIES** (like cafes, or galleries) or people selling or storing things (like cars or boats) on reserves?)
- * What do we want at the **OAMARU PUBLIC GARDENS?**
(e.g. What's the future of **CRAIG FOUNTAIN?** What about the **AVIARY?** Should we allow **GYMNASIUM?**)

Tell us what **YOU** think. Help Council answer these and other questions so we can develop a draft Waitaki District Council Parks & Reserves Management Plan (in accordance with Section 41 (5) of the Reserves Act 1977).

IT'S EASY. Just go to the Council's website: www.waitaki.govt.nz and click on 'Consultation Issues' – Parks and Reserves Management Plan. You can download suggestion forms, an information sheet and maps of parks and reserves to be included in the plan (hard copies are also available to view at Council service centres and libraries).



WANT TO KNOW MORE? LIKE TO DISCUSS YOUR IDEAS?

Drop in and chat with Council staff, Community Board members and Councillors at:

- **HAMPDEN COMMUNITY HALL**
Wednesday 7 November
Anytime between 5.30pm - 7.00pm
- **KUROW COMMUNITY CENTRE**
Thursday 8 November
Anytime between 5.30pm - 7.00pm
- **OAMARU OPERA HOUSE**
Friday 9 & 16 November
Anytime between 4.00pm - 6.00pm

* Or contact Parks and Reserves officers at Council on 03 433 0300

Post: Parks & Reserves Management Plan
Written Suggestions
Waitaki District Council,
Private Bag 50058, Oamaru
E-mail: consult@waitaki.govt.nz
Drop in: Council service centres



Valley Beauty Otematata

Valley Lodge Kowhai Place OTEMATATA Waitaki Valley

Phone or txt Anita on 0274 996620 Home 03 4387800

For full Beauty Therapy Treatments Strictly By Appointment.



WAITAKI SPRAYING LTD is available now for all your new seasons spraying requirements. We have two 4WD boom trucks available equipped with GPS.

We also have a "Quick Spray" remote controlled self retracting reel for horehound, gorse, broom etc.

We are in your area regularly.

Phone now to book your spring spraying requirements. Chris Horn 03 4312 857

021 270 2809



Club Med Omarama & Dew Drop Inn Holiday Rentals.

We are now open for short term – and longer holiday stays. The former Medical centre has been nicely renovated as a two bedroom unit with a lovely outdoor area. It sleeps four and there is lots of room for boats etc in the large fenced section. Rental for this property begins at \$95 a night. Dew Drop Inn studio units are also available. These are suitable for singles or couples- Double Beds. They share a bathroom and rent is \$65 a night. One nighters welcome.

Both units have cooking facilities, television and fresh linen is supplied weekly. There are special weekly rates.

For bookings phone Sally & Tony Fodie- at Totara Peak Gallery ph 03 4389757, home 03 4389767, 0272514380. Or email us at fodie@xtra.co.nz. Call at Totara Peak Gallery for viewing



Scarlett

hydraulic technology

For all your Hydraulic requirements.

Sales, Service, Design, Hose, Fittings & Spare Parts

97 Racecourse Rd, Washdyke. Phone 03 688290

www.scarlett-hydraulics.co.nz



Poppies Café

1 Benmore Place Twizel.

Phone: 64 3 4350848

Fax: 64 3 435 0324

Email: admin@poppiescafe.com

www.poppiescafe.com



poppies cafe & restaurant

Sit, relax and unwind at Poppies Café, Twizel New Zealand, and enjoy stunning food and fabulous coffee in a warm and friendly atmosphere. Poppies Café is a contemporary, funky fully licensed restaurant where the emphasis is on high quality café food using organic vegetables from their own gardens and the finest produce from local growers wherever possible. Poppies Café has extensive gardens and alfresco dining with superb views of the Southern Alps, and plenty of parking. Poppies Café is the ideal spot to dine at a big table with a group of friends, or just sit back, relax and enjoy a leisurely coffee in hassle free and welcoming surroundings.

GREAT SERVICE GREAT FOOD GREAT COFFEE

Road to Rio

After an eleven and a half hour flight, we arrived at Santiago Airport at 11.30hrs, to understand why our luggage was a little slow, as 5 other flights arrived at the same time. Our transfer to our accommodation took just over half an hour and was interesting to see the variance of the city of 10 million people as you pass through the cells. Some were modern, some historic and some under restoration.

Our accommodation was an apartment in a hotel-like building, very modern and comfortable, although it wouldn't be ready till 14.00hrs on the day. We decided to stretch our legs and walk around the thoroughfare of Merced and get our bearings for food and drinks which we found right under our apartment. After eats and drinks it was an early night.

Next morning we walked to a city square (Plaza De Armas) and joined in on a free walking tour of the city, which we heard about the previous day. The tour was very informative with all the sights and museums and the guides, whom were history students from the university and were very helpful. Towards the end they took us over the Rio Mapocho, which has its source from the Andes, to the restaurant area. All members of the party gave a donation for their time and dedication. The most amazing aspect we discovered was that the local dogs were living in the "Doggie Heaven". The dogs freely roamed the streets and all seemed to have their own territory and got on with each other, except once we found when waiting for the start of the tour. The Police gathered with their dogs and the locals growled to show their disapproval of the invaders. The dogs in the parks were fed by the local people and the dogs never tried to get the others dogs tucker.



After the tour we ventured back out and walked up to Santa Lucia Hill to view the city and then went down to the markets for souvenirs. As the day was nearly over, we didn't venture to the underground transport and had another early retirement as we were to fly to Rio the next morning.

The alarm went at 06.00hrs and we were ready for our 08.00hrs transfer to the airport. Waited and waited and still no transfer so we rang the agency, who said no hurry as our plane had been delayed one hour. Got to the airport to discover the plane was on time and because of our lateness there was only one seat left. The girl behind the ticketing counter was very helpful after we produced our documents and itinerary as she managed to get us on the plane on separate seats. Then run to the check point to discover that we hadn't filled in our Police departure cards, back, fill them in. We finally made the plane and drew a sigh of relief as we had just over 4 hours in the air to relax and view the grandeur of the Andes and see what they could throw at us in Rio.



Arrived 16.30hrs and transferred to the Plaza Copacabana, got our room and walked to the beach which was only a couple of blocks away. Back and found a nice bar and pool on our hotel roof top so we made use of the facilities before retiring. Breakfast next morning and booked a half day tour. We waited to be picked up and the hotel staff couldn't understand why we hadn't gone until they realised they'd taken some other people instead, so the hotel limo took us to catch up with the tour which waited for us at the bottom of "Trem do Corcovado". On the tram, and up to 'Christ the Redeemer'. Plenty of photos, although looking back down on Rio it was slightly misty and a full view was impeded.



Back down and off on a coach tour of Rio which included all the beaches and sights, including all the information on the coming Soccer World cup in 2014 and the Olympics in 2016. Back to the hotel at 14.00hrs, we walked down to the beach for photos, and then walked through one of the many road tunnels to browse through a shopping centre before going back up to the top of the hotel for photos of the city and some liquid refreshments. Before retiring we confirmed our transfer for tomorrow as we were off to the Amazon. The Amazing Amazon. – Keith Pullan



Big Sky
BED & BREAKFAST

Kay & Hank Verheul
10 Ahuriri Drive, Omarama, New Zealand

Phone +64 3 438 9538
Mobile 027 489 5149

Email hankkay@xtra.co.nz
www.bigskybnb.co.nz



Ahuriri Motels

State Highway 83, Omarama
NZ FREEPHONE: 0800 438 945

FANATICAL SUPPORTERS OF YOUTHGLIDE OMARAMA

Ex. Clinic

- 14 ground floor units
- 2 units sleep 2
- 2x20m sleep up to 5
- 1x30m sleeps up to 6
- Quiet location, 500m to shops, hotel, rental & Airfield.
- Pets by arrangement.
- Families welcome
- Rates on application

Your Hosts
Tom & Rose Shields



Hank Verheul
Builder
Quality building

Ahuriri Drive
PO Box 28
Omarama
Mobile 027-221-5192
Home 03-438-9538

New housing
Additions, alterations
Maintenance
Project management
Contracting
Insurance work
Speciality tiling

"Quality workmanship guaranteed"




DEIDRE SUTHERLAND

BEAUTYTHERAPY

FOR THE TOTAL BEAUTY EXPERIENCE

FACIAL TREATMENTS — WAXING — MANICURE/PEDICURE — EYELASH PERMING-

EYELASH & EYEBROW TINTING — OPIGEL NAILS - SPRAY TANNING



CLINIC HOURS ARE TUESDAY & WEDNESDAY FROM 10 AM UNTIL 6 PM, LATE NIGHT WEDNESDAY UNTIL 8 PM RING 03 4389474/0276868879 WE ARE USING NEW PRODUCTS FROM THE IMAGE SKIN CARE RANGE



Great Food
Quality Beers
Friendly Service
T.A.B. & GAMING

