

-OMARAMA GAZETTE –

This December 2012 issue is sponsored by the
Omarama Service Station

Articles to e-mail address booiman@xtra.co.nz (or to have you name added to the address list)
Next cut-off 31 Jan 2013. **Gazette out 1 February 2013**

-There will be no January Issue-



Mobil Ph/fax 03 4389834
Email: omarama.mobil@xtra.co.nz

Omarama Service Station 2009 Ltd.

Omarama Service Station is *Growing!*
We are now operating out of 2 workshops
Terry is at **Mobil**, and Wayne is at **Challenge**
As of the 17th December **Mobil** will be accepting
New World and Pak n Save fuel docket. It will be a
great time to save at **OUR** pumps .

On the 21st of December we will be having our
customer **Xmas** shout, we would love to see you
all here again this year. If you are not a
customer yet - come along and meet the friendly
team at **Mobil** and have a **Xmas** drink and say
giddyay - We would love to see you there!



(Saw the man.) ha ha

St Thomas' Church

December Church Notices

Combined Churches

Service

Sunday 23rd at 3pm.

Christmas Eve Mon 24th at 7pm

A Family Carol Service

Everyone Welcome.

Clergy Contacts

Rev Eric, Mattock Kurow Presbyterian Church 03 436 0773

Rev Ken Light, Anglican Vicar for Waitaki Valley North Oamaru Parish

03 437 0064



Community Board Report

On behalf of the Ahuriri Community Board would like to wish all residents a happy Christmas and New Year and a safe holiday.

Cathy Ferguson - Chair Ahuriri Community Board.



Omarama has a Justice of the Peace.

Omarama Justice of the Peace

Bill Gordon J.P. Phone 4389433

Omarama Volunteer Fire Brigade

The Brigade has had a very busy month with eleven fire calls. There have been five Motor Vehicle Accidents one medical call, three vegetation fires, a digger fire and a call to the Benmore Power Station.

We have three members away on a Qualified Firefighter course, In December one member is attending a four day medical course and two members will be attending a seven day recruit course.

A grateful thank you on behalf of the Brigade for the help with the afternoon tea following the funeral of Pam Urquhart your help was very much appreciated with many compliments received.

If anybody is interested in joining the Brigade we are looking for members who are available during the day.

If you live close to the fire station and would like to know more then contact

Howard Williams on 021 408202 or Terry Walsh at Mobil Service Station.

ASURE SIERRA MOTELS & TACKLE SHOP

OMARAMA AVE, OMARAMA.

NEW SEASON FISHING LICENCES NOW FOR SALE:

Full Season Adult \$120 Full Season Junior \$24

24 Hour Adult \$23.00 24 Hour Junior \$7

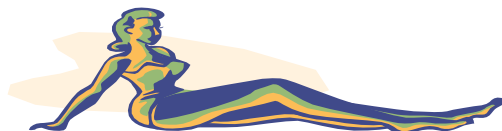
Family Licence \$156.00

Family Licence \$156.00



Have you visited our tackle shop and surveyed the wide range of: hooks, swivels, lures, flies, leaders, knives, nets, tackleboxes, weights, waders, & boots?

Upper Ahuriri River opened Saturday 1 December.



Valley Beauty

**19 Kowhai Place
Otematata**

0274996620 or 4387800

Your one stop beauty shop.

Waxing

Facials

Make Up

Eye Treatments

Manicures

Pedicures

Body Treatments

Sunbed

Gift Vouchers

Stockist : Trilogly

John Van G Cosmetics

Australian Gold Tanning Products

Carole Franck Skin Care & Sun Care

Febe Skin Care & Sun Care

Thank you for your continued support this year. I look forward to offering new and existing clients the same personalised, professional service again in 2013.

Wishing you all festive greetings & Happy Holidays

HAPPY NEW YEAR

Kind Regards Anita

My clinic is closed 25th & 26th Dec then closed again 1st and 2nd Jan

www.otematataventures.co.nz

Ahuriri Issues:

Council's Agenda

I thought at year's end I would complete my last report for 2012, by highlighting some of the issues we dealt with at Tuesday's Committee of the Whole meeting.

Youth Council: - These young members of our community are really looking at the issues confronting them and offering constructive input into Oamaru's future.

Some issues – Discussed dangers of K2 the herbal high.
Forming a Face Book page for Youth Council to get others interested.
Looked at forming a business development group.

It is great to see these young people taking an interest in their town and its future!

2013/14 Draft Annual Plan – Some proposals for consideration: Ensuring the integrity of the Disaster Fund, Weston Footpath Kerb and Channel Work, Playground New Capital, Recreation Centre, Civil Defence Radios, Waitaki Guardians, Animal Control Fees Review, Health Inspection Fees Review, and Building Control Fees Review.

Insurance Programme and Funding: Council is facing a challenge with the impact that the huge increases in premiums represent. This means that we will have to look at more self-insurance, such as taking on much larger excesses, to keep premiums at a level that can be tolerated without a too greater impact on rates.

Other Reports- RMA Fund – Balances and projects for the future, Carry Forward Report 2011/12, Summary Annual Report, Notification of Hazardous Substances Plan Change, Notification of Business Zone Plan Change, District Plan Review, Proposed Canterbury Land and Water Regional Plan, Sport Waitaki Yearly Report, Drag Racing Event at Oamaru Airport, Oamaru Exterior Wall Cladding, Repairs to Forrester Gallery, First Quarter Report 1st July to 30 September and Draft Coastal Road Strategy.

We also received a presentation from Statistics New Zealand on the Census for 2013.

Should anyone have any questions relating to these topics, I would be happy to have a chat about these or any other items of concern. It was a big day, so forgive if I have to refer to my notes should anyone want clarification on any issue.

Concerns With Service Levels in Our Towns

Every now and then we receive complaints that Council is not listening to complaints about mowing, water etc. As we live in small towns, this means that we have a small ratepayer base, which in turn, means that we cannot expect to have all our services to the level that cities do, without noticing the effect in our rates.

My frustration is that I often speak to people about their concerns, only to find that when I arrange a meeting or ask them to attend a Community Board meeting, they run out of energy and don't bother turning up. The usual word is that "we have a Community Board and Councillor to deal with all the issues, so why should I bother?"

What then happens is that the point and history (knowledge) of the problem is not always conveyed in the way that the original proponent wanted and the initiative is lost, because of a lack of backing the elected member has.

I have found that the best ways to get results for your town, is take ownership (not moanership) of the problem and prepare yourself then to work with the elected member to see it through. This way you often get a true understanding of what is involved.

The Council spends a lot of money on communication and sometimes it doesn't always get noticed, but short of knocking on everyone's door, I am not sure how we can improve things. Currently all the ratepayer groups are in the loop and we have frequent Community Board meetings, to which very few members of the public bother to turn up.

At the next election there will be a few on the Board and myself who won't be seeking re-election, so if you think you can make change and want to have some real input into the future of your town, you may wish to contemplate standing.

Craig Dawson

Councillor - Ahuriri



"Frugal Country and Hard on the Boots; a history of the Lake Ohau valley"

by Eileen McMillan

508 pages, hard cover, with bibliography, index, maps, and photographs historic and modern.

Secluded and beautiful, little known by most New Zealanders, Lake Ohau and its great glacier-formed valley was, to ancestral Maori, part of the rich breadbasket of the South Island's interior, where in seasonal excursions they would harvest a great range of roots, birds and eels.

From 1857 Europeans settled in and around the area, and by the end of that century the vast Benmore Station, at its peak some 310,880 acres, encompassed most of the valley.

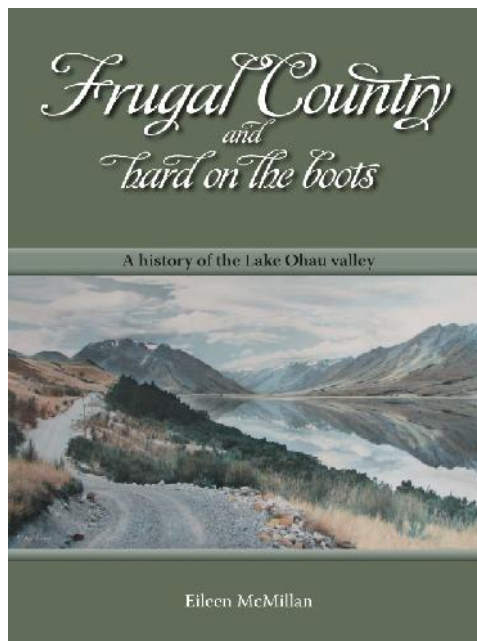
In 1916 Benmore Station was broken up, similarly Ben Ohau Station on the other side of the lake in 1920. The high country stations bordering the lake that evolved from those properties have all been researched. Long term high country families and their descendants as well as current owners tell their stories with facts and anecdotes. Station workers, musterers, hunters, trampers, skiers, fishing enthusiasts and holidaymakers have contributed.

The establishment of the Lake Ohau Lodge and Ski Field by the Wigleys in the 1950s and their later development by subsequent owners, the Lake Ohau Alpine Village in the 1980s, and the fishing, skiing, station and mountain huts around the lake and along its great rivers the Hopkins, Huxley and Dobson, are all described.

Frugal Country is available from 5 November from Eileen McMillan, PO Box 102, Twizel 7944, South Canterbury.

Phone (03) 438 9798 Email <eileen.mcmillan@xtra.co.nz>

\$170, plus \$10 postage & packing. Free delivery to Omarama street addresses.



SITUATION VACANT- Casual Cleaner – Mid December to Easter.

We require a person to help clean and service our motels.
If you are reliable, have an eye for detail. Can work 3-4 hours (mornings), 20 hours per week, some weekend work involved.
Very good wages and conditions.

Call: Cathy/Neville 4389785. ASURE Sierra Motels.

Oasis Pizza Menu

“Dine in or Takeaway” hours
Monday – Wednesday 7.30am till 5pm
Thursday – Sunday 7.30am till 7.30pm
(03) 4389 722

Hawaiian-

Ham, Pineapple, Cheese

Chicken & Cranberry Sauce-

Chicken, Brie Cheese, Peppers Cashews nuts and Cranberry Sauce, Cracked Pepper, with a fine blend of Cheeses as a top garnish.

Italian-

Pepperoni, Bacon, Red Onions, Mushrooms, Tomatoes, Cracked Pepper, & three Cheese Blend.

Oasis Special-

Tomato, Onion, Bacon, Ham, Herbs, Green Peppers, Mushrooms, Cracked Pepper, and three Cheese Blend.

Vegetarian-

Olives, Mushrooms, Peppers, Tomato, Herbs, Cracked Pepper, with our famous three Cheese Blend & Feta Cheese.

Salmon-

Salmon, Red Onion, Capers, Spinach, Creamed Cheese Cracked Pepper

FREE LARGE CHIPS WITH EVERY PIZZA

**All our pizzas are made fresh to order, and will take approximately
20 MINUTES TO SERVE**

“Our bar is open for refreshments while you wait.”

Oamaru Swimming Club – National Swimmers Fundraiser:

Dani and Alana Walsh are selling the following Quality Bakers goods. This will be a long-running fundraiser so you can order at any time – it will definitely still be offered at shearing season. We will need the order/money at least a week before you need the goods. They are selling the following:

Sausage Rolls	36 in box	\$22.00
Mince Savouries	50 in box	\$28.00
Bacon & Egg Savouries	50 in box	\$28.00
Potato Savouries	32 in box	\$20.00
Mixed Savouries	50 in box	\$30.00
(mince, potato, bacon & egg)		
Ernest Adams Long Wrapped Sausage Rolls		\$1.00ea

Please phone Michelle Walsh on 438-9834 (Mobil Garage), 438-9752 (home) or 027 358-6654 (mobile) if you would like to place an order.



**UPPER WAITAKI ZONE WATER MANAGEMENT COMMITTEE
NOTICE OF MEETING**

The next meeting of the Upper Waitaki Zone Water Management Committee
will be held at the Godley Resort Hotel, Lake Tekapo, on
Friday 14 December 2012 at 9.30 am

Members of the public are welcome to attend



Department of Conservation
Te Papa Atawhai

Project River Recovery from the Department of
Area Office in Twizel gives notice of its intention to apply herbicides to control weeds in riverbeds and
wetlands of the upper Waitaki river as follows:

Conservation Te Manahuna

Ahuriri river: Spot spraying crack willow, Russell lupin, broom and gorse with glyphosate from January to March 2013.
Clay Cliffs to Longslip Ck, isolated regrowth patches, duration 0.5 days, aerial application; Ben Avon Station to Canyon
creek, scattered trees and isolated stands, duration 1-2 days, aerial application; SH8 to Lake Benmore scattered regrowth,
duration 3-4 weeks, handheld methods.

Fork Stream Braemar Road to Tekapo River: Spot spraying Russell lupin regrowth with glyphosate using handheld
methods from October to November 2012, duration 3-4 weeks.

Godley River: Spot spraying Russell lupin, broom and gorse regrowth with glyphosate using handheld methods from
November 2012 to March 2013, duration 3-4 weeks.

Lower Ohau River: Spot spraying broom, crack willow, lupin regrowth with glyphosate using handheld methods from
October to November 2012, duration 4-5 weeks.

Mistake Creek: Spot spraying Russell lupin regrowth with glyphosate using handheld methods from November 2012 to
January 2013, duration 2-3 days.

Tasman River: Spot spraying Russell lupin regrowth with glyphosate using handheld methods from November 2012 to
January 2013, duration 1-2 months.

Contact for enquiries: Chris Woolmore, Te Manahuna Area Office, Twizel ph 03 4350802



A Big Thank You!

Please accept this as a personal thank you to everyone who has
supported our family through the recent loss of our beloved and
deeply missed Wife, Mum, Mother in law and Nanny Pam.

The support and kindness we have been given over the last two
and a half years of Pam's illness is overwhelming and we are
greatful for our loving Friends.

To all our Family your support & presence at the Hospice in Mum's
final weeks is something we will never forget.

A special mention to Aunty Shern you did Mum so proud during
and at the end of her journey you're a star!

Pam's memory will live on in hearts forever and I'm sure it will
In many of your hearts to.

Dave, Harry & Helen, Summer & Nick, Alyx, Kodie & Tessa Xx

The Amazing Amazon

Our transfer from our Rio hotel was on time and an hours drive got us to the airport. Booking in went smoothly though slow and 4 hours flying time later, we arrived in Manaus, and our tour guide picked us up and transferred to the Tropical Hotel. Our hotel was of excellent grandeur of timbers from the Amazon basin, so we found the lounge for tea and drinks.

Next morning we further explored the hotel to find they had a zoo with many of the native animals of the region. Then we waited for the rest of the tour party (2 Australian couples and a single lady from Russia) and we proceeded to the vessel moored beside the hotel and settled into our allotted cabins before coming back on deck to the bar for photos and introductions. We got under way and steamed down the Rio Negro, passing the city of Manaus (population 1.8 million) and into one of the many tributaries where we were to anchor for the night and use the onboard punts to explore the waters at night looking for a smaller version of alligators and the tree monkeys. If you didn't see them with the spotlight you certainly could hear them, and then back to the mother vessel (MV Desafio) for a well earned sleep.



06.00hr rise and away in the punts to feed the monkeys and visit an onshore small gift shop. Then back to the mother vessel and steamed to the confluence of the Rio Negro (Mineral water) and the Amazon (Sediment water) where the two waters never intermingle leaving a clear and distinct line for over 10 Kms. Sailing back pass Manaus we headed to another tributary to do some Piranha fishing which proved very interesting. I managed to land 4 piranhas, 2 sardines and some sardines that were nicely sliced behind the gills. All landed fish were kept and taken back to the vessel for a future use. That night in the punt we went looking at the tree snakes and 3 toe'd sloths before another well earned rest.

Another 06.00hr rise and off in the punts to feed the Pink Dolphins with yesterdays catch. You hold the piranha by the tail and stir as much of the body in the water and the dolphins come and take it very surprisingly and before you realise, it's gone. Back to the vessel and away to inspect a village, but unfortunately as we got there, also did a massive storm, so we waited for it to abate, but to no avail, so we moved away to an archipelago and anchored. Got the punt out again and away to spot Macaws and Toucans before returning to the vessel for refreshments at the bar and a good night's sleep.



05.00hr up anchor and away back to the village. We were introduced to the head man and he gave us a guided tour of the village and surrounds. We walked through some dense jungle to return and were shown through the old school then to the Government sponsored new school and their communications. Back to the vessel and then a slight mechanical problem which later, as we steamed back to Manaus, turned into major trouble. They radioed back to Manaus for a river taxi as at the knots we were travelling, the other members would not be in time for their plane, as we were scheduled to fly much later. Time we got to the airport, we had a 2 hour wait and then they we going to put us to Santa Cruz – No, we’re going to Sao Paulo first.

Overview of the Amazon was incredible, the amount of water, a fifth of the worlds fresh water, the meterage in the rise and fall between the seasons, the large vessels that travel the 3000 kilometres from the ocean and many other aspects too many to mention.

When we landed in Sao Paulo we taxied to a holding area then to the terminal by bus at the same time as other storm raged and when our bags arrived they were very slightly – WET. The half hour transfer to the Hotel Real Castilla was interesting as darkness was setting in and the streets were deserted with a sprinkling of rubbish around and the driver advised not to venture out at night. Once booked in and the tipping formalities over it was after midnight. P.S. Watch American dollars as there is not much difference between a \$1 and \$100 in appearances. !!!!!. Tomorrow it was explore Sao Paulo and start the next leg to Lake Titicaca as per schedule or so we thought. – Keith Pullan



Upper Waitaki RSA Inc.

On behalf of the Upper Waitaki RSA Executive Committee, I would just like to take this opportunity to thank all the businesses in Omarama who donated prizes for our annual end of year Christmas Party Raffle. This brings a lot of fun and joy for our members as well as helping us to raise vital funds for our organisation.

Also on behalf of our RSA Association, I would like to wish you all a Merry Christmas and a Happy New Year. Please remember our New Zealand Defence Force Personnel serving overseas at this time and will not be coming home for Christmas, especially those serving in Bamiyan Province, Afghanistan. We pray that they stay safe and come home in one piece.

Thank you to:

GlenCraigs	Heritage Gateway
Ladybird Hill Winery	Oamaru Vets
Oasis Cafe	Omarama Challenge Garage
Omarama Four Square	Omarama Hotel
Omarama Hot Tubs	Omarama Merino Country Cafe
Omarama Mobil Garage	Sierra Motels
Totara Peak Gallery	Wrinkly Ram Cafe

We ask all our members to support these businesses who have made generous donations.

“PEOPLE HELPING PEOPLE” IS OUR MOTTO.

Michael Blackstock (President)

Little Kids and big Kids toys for Christmas

Totara Peak Gallery

Kids toys for under \$5- aero props, cap guns, bubble wands etc, cell and iphone bags for \$12 and under, car models of every description, hot wheels, fashion jewellery scarves and estate gold and silver jewellery. Call and see there is something for everyone



I am now unpacking auction lots of fine china; Royal Doulton, Belleek, Royal Albert, crystal and silver - and many other treasures. With the addition of the Motoring Shed I have created a 'Hens Den' in a corner of the 'Blokes Shed'. There is a great selection of Kitchenalia and other treasures. For the first time, in a while, we have cast iron kettles, camp ovens and wonderful rustic farm items- great for use or decorations in the garden or in the home.

MCGARTLAND PLUMBING

Call John

PH: 0220 381 065

AH: (03) 435 3243

EMAIL: bjmcart@xtra.co.nz



CERTIFYING PLUMBER AND DRAINLAYER
NO JOB TOO SMALL

UPPER WAITAKI POLICE NEWS



Not a lot to report.

A few cars have fallen off the road recently; mainly because the drivers have chosen to ignore their body telling them they are tired. The majority of crashes in the area are due to people falling asleep. I don't have the exact figures but from memory I would put the amount of crashes I have attended, at somewhere in the vicinity of 75-85 percent...due to people falling asleep.

So bare it in mind, when you are heading away on holiday, have a rest if you need it!

Drink driving.....**DONT DO IT!!**

I can't say much about the 2 motorcyclists involved in the fatality in the Lindis pass recently, as the matter is still being investigated and before the Court. Our thoughts go out to the 2 family's who won't have a chance to spend Xmas with their loved ones.

NZTA have confirmed that funding is available for 2 flashing speed feedback signs, which will be installed before the beginning of the new school year; hopefully this will stop speeders, and putting our kids at risk. Big up's to the NZTA, who have been great to deal with.

I recently met a young Aussie man who thought he would go for a wee walk from the Ahuriri Valley across the ranges and meet his wife at Lake Ohau. He was well prepared as he had a muesli bar and a map that he got for free from one of our shops. The map was a general picture of the Basin, not a proper map. Funnily enough he got lost and was found at the end of Quailburn road. It could have been a lot worse, and it was only luck that he ended up where he did. If your going tramping be prepared and make sure you tell someone of your plan and stick to it.

I would also take this opportunity to remind you all to call me at anytime, if you see something untoward happening. Even if you think I'm not working, ring me anyway. A lot of the times I get calls from people telling me about something that happened a few days ago, but they didn't want to annoy me on my day off. Thank you for the thoughts, but evidence can be lost and by that stage it is too late to do anything. Tell me at the time. Honestly, I don't mind.

In November, Omarama SAR were awarded the NZ Land Search and Rescue "Supreme award" this is the highest Honour and a National award. This was for the search of David Palmer in the Ahuriri Valley, May this year. The award is currently on display at The Omarama Hotel. So congratulation Omarama SAR team, you've done us all proud.

I wish you all a great Xmas and new year. Look after each other and be careful out there, especially on the roads and Lakes.

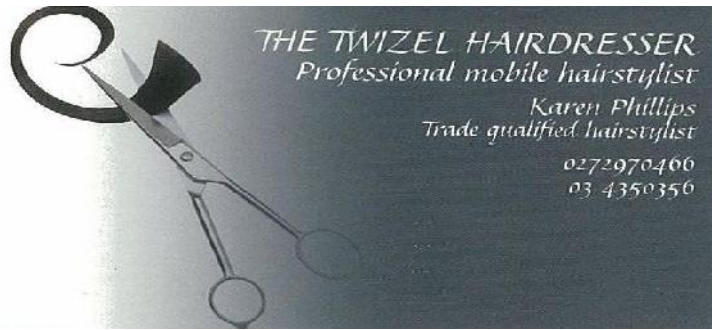
Bean

Omarama Police

Ph 027-2304946

Ph wk 03-4389559



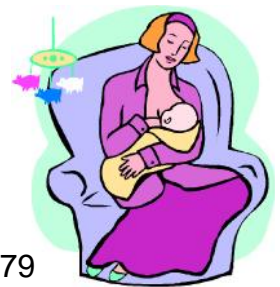


Breastfeeding Works!"

Having a baby? Already breastfeeding a baby of any age? Then contacting a Volunteer breastfeeding counsellor will be positive for you.

These counsellors are mums, who have been trained to support breastfeeding mothers. "Breastfeeding Works!" counsellors are able to help you with the ups and downs of breastfeeding. No question is too small! There are three local Breastfeeding Works counsellors local to Twizel and Omarama. We are just a phone call away.

Sarah 021 326 909, Liko 0272 497 555 or Deidre 0276868879



For Private Sale or Long term Rental -Omarama Township.

Tidy 4 bedroom home on well fenced, large, easy care section.

Neutral decor, recently painted throughout.

Sunny open plan living and dining, with Yunca multi fuel burner on wetback. Heat transfer to bedrooms.

Separate kitchen with generous pantry. Excellent Storage.

Spacious bedrooms all with double wardrobes.

Bathroom, Shower and toilet all separate.

Single garage with work bench.

Priced to sell at \$260,000 Or Long term rent for \$250 per week

For further details or to arrange viewing please phone Alison on 027 227 3939



Need ideas for Christmas ? Vouchers make great gifts

We also stock Lavish Soaps

Dolphin Clinic Essential Oils and Massage Oils

Need time out book in for a Hot Tub

Or Massage and spoil yourself!

Ph 4389 703



OMARAMA'S PREMIERE
VINEYARD RESTAURANT • TOURIST ATTRACTION






Restaurant Wine / Bar Walking Track Playground Fish Feeding

Merry Christmas From Ladybird Hill

**HAPPY
NEW
YEAR**

From your Editor

OMARAMA AIRFIELD

Omarama Airfield is a Waitaki Council Controlled Organisation 50% owned by the Council and 50% owned by an association of South Island gliding clubs. It is run by a board of four directors, Hugh Cameron and Bill Gordon appointed by council and Terry Jones and Alan Holgate from the gliding fraternity.

The airfield is predominantly used for gliding but is open for private and commercial operations power planes and helicopters. A successful and seasonally busy commercial gliding operation draws many visitors and pilots to the area. There is a continual landscaping and improvement programme and recent land purchase will allow runway extension the full length up Prohibition road in the future. Winch launching is also being established. Omarama Airfield Ltd. gets it's income from landing fees, building leases and commissions on commercial operations.



This is a valuable community asset that contributes significantly to the local economy.

People are welcome to come and watch, the spectacle of up to 70 gliders being launched in quick succession during competition is an interesting sight! **PLEASE STAY OFF THE ACTIVE AIRFIELD AREA.**

This season's diary includes:

Youth Glide Camp 7th to 17th December. This popular camp introduces 24 young students to the sport in a disciplined forum that has generous financial support.

National Multi Class Championships 1st to 12th January 2013.

Bill Gordon



MERCURY 135HP STERNDRIVE ONLY RUN 66 HOURS IN FRESH WATER ONLY, GARAGED AND IN MINT CONDITION WITH MANY EXTRAS. NAVMAN FISH FINDER DEPTH SOUNDER, DOWN RIGGER, ROAD COVER, CANOPY, AUXILLARY OUT BOARD- IN NEW CONDITION, LIFE JACKETS, FIRE EXTINGUISHER AND MANY MORE EXTRAS \$22,000

See Tony at Totara Peak Gallery or ring 034389767 mobile 0272514380

A WORD FROM THE CHAIR



The Upper Waitaki Zone Implementation Programme (ZIP) was received and endorsed by Environment Canterbury, and the MacKenzie and Waitaki District Councils, earlier this year.

The ZIP contains around 50 recommendations on how to implement the Canterbury Water Management Strategy (CWMS) in the Upper Waitaki.

The vision of the CWMS is to enable present and future generations the greatest benefit from the water resource within an environmentally friendly sustainable framework.

The zone committee worked collaboratively with stakeholders and community members to develop the recommendations for water management that are acceptable to a wide range of interests.

It includes recommendations on five key areas; Water nutrient and effluent management; Waitaki Catchment Water Allocation Regional Plan including environmental limits and development; Braided Rivers; Biodiversity; Prosperity.

Monitoring

One of our top priorities is improving the monitoring in our zone so future decisions are made using the best possible data.

To achieve this we have identified gaps in the current monitoring and are recommending new monitoring sites.

We are also recommending that monitoring be integrated between various agencies, including consent holders, so that the community does not pay twice.

Look out for new ground and surface water quality monitoring sites being installed before Christmas. The data these provide are critical for future recommendations the committee will make on catchment load limits.

Co-opting to the zone committee

The zone committee is looking for more local knowledge to help it with its water management decisions. We have decided to co-opt someone to the committee for the rest of the term (until December 2013).

We are looking for someone from the Tekapo side of the MacKenzie Basin with knowledge of, and connections to, the rural community.

If you want to be involved in local water management and you are able to work collaboratively and balance a wide range of interests in water – please contact our facilitator.

More information and a schedule of meetings for the rest of the year can be found at www.ecan.govt.nz/canterburywater.

Get involved in local water issues

All Zone Committee meetings are open to the public and include a slot for members of the public to contribute if they wish.

The next meeting is at the MacKenzie Country Inn Twizel, Friday November 16th from 9:30am. Agendas will be available at www.ecan.govt.nz/canterburywater.

Barry Shepherd – Chair

Immediate Steps biodiversity funding

The committee is always on the lookout for local biodiversity projects that would benefit from funding assistance. If you know of, or have a worthy project, please contact facilitator Nic Newman or visit www.ecan.govt.nz/biodiversity and check out the funding section where you will find an on-line funding request form.

Immediate Steps is a five year \$10 million biodiversity protection and restoration programme that was launched in 2010 as part of the CWMS. The zone committee is responsible for the local implementation of the programme.



For further information contact:

Nic Newman

Upper Waitaki Zone Committee Facilitator

027 4563259 | nic.newman@ecan.govt.nz | 0800 324 636

GLENCRAIG'S CLOTHING

Check Out our new Spring Stock!

New supplies in today of Blitz Summer Shoes including the gorgeous new **SMILE** shoe and stocks of **Arcopedico** – the lightest most comfortable Portuguese made summer shoe at a great price!

Plus lots of jandals, sandals and flip flop styles

**Columbia – Breakaway – Aertex – Huski –
CCC Canterbury
Speights Singlets & Jandals**

Keep an eye on our Facebook page for photos too!
(You can link through our website www.glencraig.co.nz or find it directly.)

Also – Boo Radley & Ice Express - gorgeous one-off summer fashion styles for the ladies!

Contact us on 03 4389 816 or email info@glencraig.co.nz or glenys.craig@xtra.co.nz
www.glencraig.co.nz Phone 03-4389 816



Valley Beauty Otematata

Valley Lodge Kowhai Place OTEMATATA Waitaki Valley

Phone or txt Anita on 0274 996620 Home 03 4387800

For full Beauty Therapy Treatments Strictly By Appointment.

Club Med Omarama & Dew Drop Inn Holiday Rentals.

We are now open for short term – and longer holiday stays. The former Medical centre has been nicely renovated as a two bedroom unit with a lovely outdoor area. It sleeps four and there is lots of room for boats etc in the large fenced section. Rental for this property begins at \$95 a night. Dew Drop Inn studio units are also available. These are suitable for singles or couples- Double Beds. They share a bathroom and rent is \$65 a night. One nighters welcome.

Both units have cooking facilities, television and fresh linen is supplied weekly. There are special weekly rates.

For bookings phone Sally & Tony Fodie- at Totara Peak Gallery ph 03 4389757, home 03 4389767, 0272514380. Or email us at fodie@xtra.co.nz. Call at Totara Peak Gallery for viewing



Scarlett
hydraulic technology

For all your Hydraulic requirements.

Sales, Service, Design, Hose, Fittings & Spare Parts

97 Racecourse Rd, Washdyke. Phone 03 688290

www.scarlett-hydraulics.co.nz



Poppies Café
1 Benmore Place Twizel.
Phone: 64 3 4350848
Fax: 64 3 435 0324
Email: admin@poppiescafe.com
www.poppiescafe.com



poppies cafe & restaurant

Sit, relax and unwind at Poppies Café, Twizel New Zealand, and enjoy stunning food and fabulous coffee in a warm and friendly atmosphere. Poppies Café is a contemporary, funky fully licensed restaurant where the emphasis is on high quality café food using organic vegetables from their own gardens and the finest produce from local growers wherever possible. Poppies Café has extensive gardens and alfresco dining with superb views of the Southern Alps, and plenty of parking. Poppies Café is the ideal spot to dine at a big table with a group of friends, or just sit back, relax and enjoy a leisurely coffee in hassle free and welcoming surroundings.

GREAT SERVICE GREAT FOOD GREAT COFFEE

Big Sky
 BED & BREAKFAST
 Kay & Hank Verheul
 10 Ahuriri Drive, Omarama, New Zealand

Phone +64 3 438 9538
 Mobile 027 489 5149
 Email hankkay@xtra.co.nz
 www.bigskybnb.co.nz

Ahuriri Motels

State Highway 83, Omarama
 NZ FREEPHONE: 0800 438 945

FANATICAL SUPPORTERS OF YOUTHGLIDE OMARAMA

My Offer:

- 14 ground floor units
- 2 units sleep 2
- 2x20m sleep up to 5
- 1x30m sleep up to 6
- Quiet location, 500m to shops, hotel, restaurants & Airfield.
- Pets by arrangement.
- Families welcome
- Rates on application

Your Hosts
 Tom & Rose Shields

Hank Verheul
Builder
 Quality building

Ahuriri Drive
 PO Box 28
 Omarama
 Mobile 027-221-5192
 Home 03-438-9538

New housing
 Additions, alterations
 Maintenance
 Project management
 Contracting
 Insurance work
 Speciality tiling

"Quality workmanship guaranteed"

IMAGE SKINCARE

DEIDRE SUTHERLAND

BEAUTY THERAPY

FOR THE TOTAL BEAUTY EXPERIENCE

FACIAL TREATMENTS — WAXING — MANICURE/PEDICURE — EYELASH PERMING—
 EYELASH & EYEBROW TINTING — OPIGEL NAILS - SPRAY TANNING

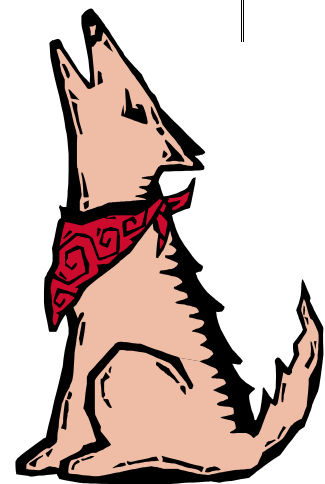
**CLINIC HOURS ARE TUESDAY & WEDNESDAY FROM 10 AM UNTIL 6 PM,
 LATE NIGHT WEDNESDAY UNTIL 8 PM**

RING 4389474/0276868879 WE ARE USING NEW PRODUCTS FROM THE IMAGE SKIN CARE RANGE



BISCUITS

BARK UP



Wayleggo all you Shepherds....

Round up your best huntaway

And head for the

Omarama Hotel

Friday 21th December

7pm

Entertaining night of Competition, Prizes

Sponsored by Omarama Hotel

Fundraising Auction for the

Omarama Rodeo

Live Music Cam Scott



Omarama Rodeo



Friday 28th December

« Bareback

« Saddle Bronc

« Steer Wrestling

« Calf Roping

« Bull Ride

« Barrel Racing

« Team Roping

*'Come and support
your community event
and local competitors'*

Children's Sheep Ride

Calf Ride

Youth Steer Ride

ADMISSION

\$20 Adult, 12-16 yrs \$5

Under 12 free

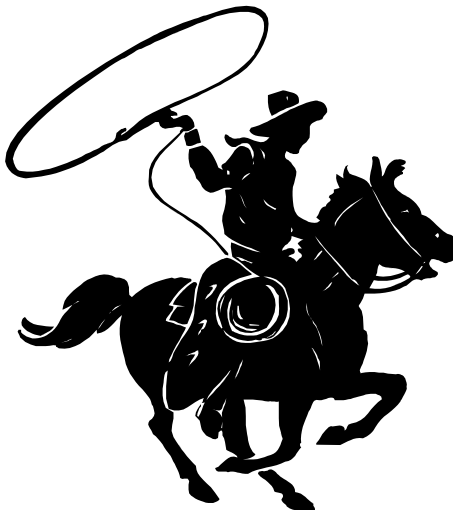
'See you there'

Public Bar operating, no BYO.

Intoxicated people will not be tolerated

and removed from grounds

Remember this is a family event!

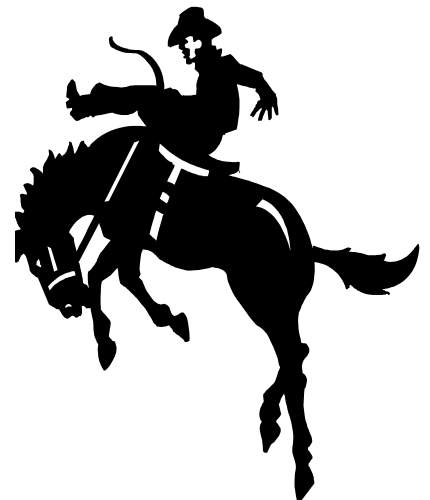



Slack

9am

Starts

11am





Heritage Gateway - Omarama

Christmas Dinner

Buffet

25th December 2012

\$65.00 per person

complimentary glass of bubbly on arrival

Entrée

soup of the day
gourmet bread selection basket
cold meats platter
seafood cocktail salad
tossed green salad
pumpkin and feta cheese salad

Mains

beef medallions with mushroom sauce
oven baked local salmon with béarnaise sauce
lamb provencal
gourmet potato rosemary and garlic
vegetable medley
spinach and ricotta ravioli

Carvery

roast ham
roast turkey

Desserts

christmas pudding with brandy sauce
traditional pavlova
fresh fruit salad
ice cream

For bookings please call:
0800 809 805

*Happy holidays from the Heritage
Gateway!*