



# ***-Omarama Gazette -***

## **November 2017**

Sponsored by

### **ASURE Sierra Motel and Tackle Shop**

---

## **Going up? What the building stats show**

Scanning the plans, pacing it out, measuring it up, there's been a lot of it going on in town lately.

But does all that hammering mean Omarama has itself a building boom?

Let's take a look at the figures and trends.

Waitaki District Council records show there were 29 building consents issued (needed for a range of work, not just new builds) for Omarama for the 12 months ended September this year.

For the previous 12 months almost half that number - 16 building consents were issued.

Two years ago – 2015 – 17 consents were issued which was a drop from the 27 recorded the year before, in 2014, and the 30 recorded in 2011.

The number of 'rateable dwellings' -homes- is assessed each rating year for the 12 months ended July and used to calculate targeted and user-pays rates, for example, the community hall rate.

In 2016, 332 were charged a hall rate and, as at July this year, 342 dwellings qualified.

This has been climbing steadily since 2012 when 304 qualified.

Builder Bill Adams, who has lived here since 1981, said things were noticeably busier around the town.

"I'm busy at the moment, everyone seems to be busy."

***continued over...***

# This issue is brought to you by ...

## ASURE Sierra Motel and Tackle Shop



It's time to dust off those 'gone fishing' signs, shut that office door, leave the world behind, and take off into the wild blue of Omarama.

But be sure to pay a visit to Colin and Sue at ASURE Sierra Motel's tackle shop before you head out.

They have a fully-stocked shop, with lures and baits for all waters - rivers, lakes and canals, anything a keen fisher might need, plus all that invaluable local knowledge. They also have spinning rods for hire.

The tackle shop is Fish and Game New Zealand's Central South Island fishing licence Omarama agents.

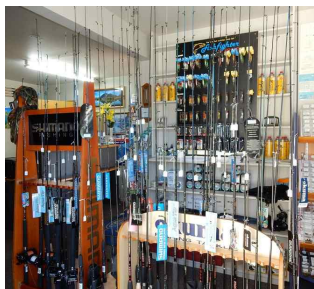
There are nine different types of fishing licence on offer so it's easy to pick up the licence that best suits – for young and old, and families, and whether or not you've managed to escape for just a few days fishing or you're lucky enough to be able to put up the 'gone fishin' sign for the whole season.

A whole season licence is valid from October 1 to September 30.

The open season in all waters of the Central South Island region is from 1 October to 30 April with a couple of exceptions.

Omarama's internationally renowned Ahuriri River and its tributaries downstream of Longslip Creek (except the Omarama Stream) open this Saturday - the first Saturday in November, and upstream of and including Longslip Creek including the river lagoons open the first Saturday in December.

**[www.omarama.co.nz](http://www.omarama.co.nz)**



### **ASURE Sierra Motel and Tackle Shop**

**Colin and Sue Harvey  
8 Omarama Ave,  
Omarama  
Otago 9448**

**Phone: 03 438 9785**

**Freephone 0800 743 772**

**Email: [sierramotels@omarama.co.nz](mailto:sierramotels@omarama.co.nz)**

# Going up? What the building stats show

*...continued from page one*

Other tradespeople have to be booked for work well in advance.

"[But] I've always been busy...that hasn't changed much," he said.

Hank Verheul, who moved to Omarama in 2009, says it is as "busy as it ever has been", with "relocatable" homes also being brought in.

Recently, he has been working on his own build - motels - to meet the increased demand for accommodation driven by the growth in tourism.

Hank said the biggest obstacle to further growth was "availability of land".

Versatile Oamaru owner Adrian Tuffley said he recently moved to work in the area because he could see its potential. His most recent project was a show home which was not yet finished and orders were coming in already, he said.

"We're really busy, we've got about a year's work ahead of us.

"Omarama's going mad. We need more land.

"It's flowing through to everything... right through the trades."

It was a struggle to find tradespeople even although there were more in the area, he said. "Omarama now has a full-time plumber...Omarama's never had that before."

Oamaru builder Ray Kennard, who owns a holiday home here and also does some work in Omarama although it is not his "core area", said what was happening in town was a reflection of what was happening throughout the valley.

"Things are pretty buoyant in Omarama ...Otematata is booming... the whole valley is humming."

He believed recent activity was driven by "spill-over" from demand in Twizel and Cromwell – a similar trend to that which happened several years ago, he said.

There was a lack of sections for new building.

Almost all spare land in Omarama had been snapped up in recent sales, he said.

He believed some buyers had chosen to "land-bank" rather than to develop.

"Everything is sold. We probably need a few more subdivisions...but, on the other hand, we like it quiet the way it is, too," Ray said.



# Living Life on the edge - The wrap

Omarama sits at a crossroads close to Otago's present border with Canterbury. Sometimes it seems as if that red and black line slips a little too far south. But Omarama's connection to the Mackenzie Country and further north is strong. This month we conclude a conversation - and a series of stories - about whether it matters, who really cares, and why. This is merely a 'rough draft' of a complex story. We welcome feedback, opinions, corrections and clarifications. Omaramagazette@gmail.com

## This way or that? The politicians have their say

Last month, the Omarama Gazette emailed our civic and regional government leaders to ask them on which side of the boundary fence they stood, Otago or Canterbury, and why. The email was sent to; Waitaki mayor Gary Kircher, Mackenzie mayor Graham Smith, Local Government New Zealand chairperson, Dunedin mayor David Cull, Otago Regional Council chairperson Stephen Woodhead, Environment Canterbury South Canterbury councillor Peter Scott. We are grateful to those who took the time to reply before we went to print – next time these guys are in town will someone please shout them a beer.

**From Otago Regional Council chairperson Stephen Woodhead:**

*Living life on the edge...*

*Just where in the world are we?*

*I am pleased this discussion is still alive and well, not surprising really after attempts to push back the invaders from the north in the past are a clear indication of how Omarama and surrounds feel. We all know it is part of Otago.*

*We all have a strong attachment to home, sometimes home is the place where we grew up, sometimes it is the place we settled down and raised our family, sometimes home is where our grandparents or ancestors came from. For me Omarama is not home, it is the place our family and friends enjoy a camping holiday for two weeks each January, we enjoy the scenery, somewhere to get some sun and peace and quiet while relaxing on a beach up the lake, catch a fish or two and water ski. Most readers of the Gazette will call Omarama area home and I would bet my last dollar that a resident survey would show clear and resounding support for the fact that Omarama is in Otago.*

*How can I be so confident, firstly Wikipedia, the trusted source of all facts states "Omarama is a small township at the junction of State Highways 8 and 83, near the southern end of the Mackenzie Basin, in the South Island of New Zealand. (yes yes, get on with it) Omarama is in the Waitaki District, in the historic Province of Otago" There are several hints in the statement, The Waitaki District is part of Otago and Omarama is clearly part of that District being at the head of the Waitaki Valley. Ah ha, there you go, that's that then.*

*Ok, for those not convinced I will continue with some examples. Occasionally in our communities we need some help, e.g. the fire brigade, historically Omarama's brigade has been part of the Southern Region, Waitaki River South.*

*If you ring 111 and say a rescue helicopter is needed, guess where it comes from, you've got it, the best equipped service in the country, two dedicated helicopters on standby complete with night vision goggles, world first "3D Synthetic Vision" to*

*provide a real time 3D virtual reality of the surrounding terrain which is coupled with GPS flight management system and the helicopters auto-pilot, all based in Mosgiel with a helipad on the Dunedin Hospital, none of this being dropped in a park and transferred to an ambulance drama like Christchurch. This world leading service is supported and partially funded by the Otago Regional Council and the wider community to ensure it is ready to go when you need it, Omarama.*

*And while we are talking emergencies, Civil Defence for all the Waitaki District is part of an Otago Regional organisation now; Emergency Management Otago has twelve dedicated and trained staff across the region who will lead a coordinated response when a civil defence emergency occurs. The message Omarama and surrounds is very clear, Otago cares for you, it will be Otago who turns up when the chips are down!*

*Now talking about turning up, you need to be vigilant landholders as there are more unwanted advances from the north. Wallabies are moving south and we do not want them. Due to lack of control and growing populations in Canterbury, they are moving across the dams in reasonable numbers, (we have the evidence on camera) and Otago ratepayers are having to spend the best part of three hundred thousand dollars annually aiming to keep them out of Otago.*

*So there are several examples of how things actually function, regardless of lines on paper. Do we need a new boundary, no, reinstating the true boundary would be good but there are higher priorities. It is only an imaginary line for administrative reasons in reality. Otago is where in the world you are Omarama, see you in January.*

*-Stephen Woodhead*

#### **From Mackenzie District mayor Graham Smith**

*I have often been asked this question. Our boundary, the Ohau River sits well in southern South Canterbury and well inside the ECan area.*

*Mackenzie District Council's on-going development in Twizel has seen this town now become the largest centre of the Mackenzie. The identity that Twizel has with the Mackenzie Country is strong. It rides high on the back of Aoraki Mount Cook, Aoraki Mackenzie International Night Sky Reserve, the main water storage areas, the Alps 2 Ocean Trail passing through, and the millions of tourists that travel south from Tekapo. Farming too rides high with the name Mackenzie. It carries its own mystique. Omarama students attend Twizel Area School, High Country Health has two doctors in Twizel. Building supplies, a bank, a gymnasium and Events Centre, supermarkets, and many other services are provided by Twizel. I feel that our district boundary is in the rightful place and any further south would conflict with North Otago history and heritage. In taking our communities interests at heart I feel that a single catchment works well for Mackenzie. The communities work well together now and I don't see any evidence that a boundary would be of any help other than land grabbing. -Graham Smith, Mayor, Mackenzie District Council*

#### **Some replies were brief:**

##### **Local Government New Zealand chairperson and Dunedin mayor David Cull**

*On behalf of Mayor Cull, thank you for your email. The Mayor declines this opportunity.*

##### **Waitaki mayor Gary Kircher**

*Thank you for your email. I am currently out of the office and will be returning Thursday the 2nd of November. I will be checking emails during this time, but if you have any urgent matters, please contact my PA.*

#### **Some briefer still :**

**ECan South Canterbury councillor Peter Scott:** *did not respond*

# ***Living Life on the edge - Where do they draw the line***

**Is Omarama in Canterbury or Otago? Here is a by-no-means exhaustive round-up of where various agencies and organisations draw their boundary lines.**

## **First some history**

Te Ara - the Encyclopedia of New Zealand: Otago was a province of New Zealand until the abolition of provincial government in 1876. The northern boundary with Canterbury was the Waitaki River from the Pacific Ocean to its source in the Southern Alps, and from there a straight line to Awarua Bay (now known as Big Bay) on the west coast. The inland area of the Waitaki catchment was unexplored in 1853 and dispute later arose over which branch of the Waitaki should form the boundary. The boundary was formalised in 1861 as following the Ohau River to Lake Ohau and from there a straight line to Mount Aspiring and Awarua Bay. (The Spadeline)

## **Present day administrative boundaries**

Local Government New Zealand – Omarama is in the Waitaki District and the Canterbury Region. Land-wise 59.61% of the Waitaki District is part of the Canterbury Regional Council (ECan) and 40.39% is managed by the Otago Regional Council, 90% of the population of the Waitaki District live in Otago and 10% live in Canterbury.

**National representation:** Since 2014 the boundaries of the Waitaki electorate include all of the Waitaki, Central Otago and Mackenzie districts as well as the northern portion of Queenstown Lakes District around Wanaka and a portion of the Timaru District (excluding Timaru City) around Paeroa and Geraldine. The Aoraki and Otago electorates disappeared.

## **The national record: from the LINZ website**

Land Information New Zealand is the public service department of New Zealand charged with geographical information and surveying functions as well as handling land titles, and managing Crown land and property. It “creates” and “provides” the authoritative national record of the country’s physical features – New Zealand’s topography. “It’s an important part of building our common understanding of where is where. To do this we map both the built and the natural environment of New Zealand –the mountains, plains and rivers, and the roads and railways.”

And according to LINZ <https://www.topomap.co.nz/> Omarama is in Canterbury.

Google maps: Omarama is in Canterbury – Google it, you’ll see.

‘Wiki’ Omarama and you’ll see Wikipedia has a bob each way - Omarama is at the southern end of the Mackenzie Basin ...in the Waitaki District, in the historic Province of Otago.

The Census: Department of Statistics, Omarama is in Canterbury.

Met Service: Omarama is in the forecast area of the Canterbury high country.

## **Emergency services:**

Police: The Southern Police District is the largest geographical police district in the country. It covers a quarter of the country’s landmass, from Stewart Island in the south, north to the Waitaki River (up to the Ruataniwha Dam) and west to Haast.

Land Search and Rescue – Omarama is North Otago

Fire and Emergency New Zealand: According to the brand new website [www.fireandemergency.nz](http://www.fireandemergency.nz) the Omarama Fire Station can be found in the Canterbury Region but Omarama is under the administration of Otago Fire and Emergency New Zealand’s Central (North Otago) district. “Our area of responsibility is the Otago Regional boundaries (with a few exceptions).”



### *...continued*

From Omarama chief fire officer Terry Walsh – “Boundaries are much less rigid these days ...it is more about neighbours helping out neighbours.”

Before the merger into FENZ the Omarama urban fire boundaries were drawn close in around the town, now the rural fire boundaries have been adopted.

Omarama's First Response reports to St John South Canterbury area manager whereas Kurow St John reports to Otago/Southland.

The Otago Regional Rescue Helicopter covers Omarama but once again, the rescue helicopter services work together and who-ever is closest will attend.

The Waitaki District Council is part of the Otago Civil Defence Emergency Management. The ECan ratepayers of the district contribute to this.

Health – Omarama comes under the Southern District Health Board (By all accounts the first name in its title is “Beleaguered” – Google it, you'll see what I mean!)

School dental services – Twizel, South Canterbury.

Federated Farmers: North Otago

The Mackenzie Agreement – part of the Mackenzie Country

ECan's Canterbury Water Management Strategy water zone committees: Omarama is administered by its Upper Waitaki Zone Committee

The Department of Conservation: Omarama is in the Canterbury conservancy and from the Doc website...

“Nestled among mountains and lakes in the heart of the Mackenzie Basin, the Omarama area offers excellent fishing, biking and hiking opportunities.”

Fish and Game New Zealand: Omarama is in the Central South Island region - from the south banks of the Rakaia to Moeraki, with headquarters in Temuka.



# ***Living Life on the edge - The last word, E Noho ra***

**And the last word goes to Jimmy Courtney, who started this conversation.**

*"With much confusion surrounding just where North Otago ends and the Mackenzie begins, I suggest we stick with the original. Maori named Mt Cook 'Aoraki' and the river and its basin Waitaki (weeping waters, or the tears of Aoraki) so it would be fitting for the Government to step up, back local iwi and settle on the name 'Waitaki' for the entire region. No local body could challenge that!"*

We've had a fascinating discussion.

Borders, what do they matter, who really cares?

Otago vs Canterbury, south vs north, Kiwi vs Aussie, Canada vs the US, England vs Scotland – oh, and Ireland, oh, and Wales, oh, and France, and oh, wait ...Europe. Let's face it – history has shown those who live side by side are bound to fall out at sometime, and yet...

should someone or something threaten our neighbourhood then we stand together and nothing will tear us apart.

So, for all of us who call Omarama home, the place we stand, our turangawaewae – wherever we were born, whatever our roots, whatever the province, whatever is our first allegiance, we're Mainlanders second, Kiwis through and through, Austral-Asians, Pacifica, and Earthlings, not Martians.

To sum up the discussion: 'Our place' does shape us and our community.

No boundary will satisfy everyone - they and identities shift over time.

For those interested in reading feedback on these stories go to :

<https://www.facebook.com/omaramagazette/posts/1879987298697116>





# Lest we forget, Wednesday, October 18, 2017

On this date one hundred years ago Omarama labourer Philip O'Neill was killed in action at Ypres, Belgium. His great nephew, Robin McPhee, of Wellington, tells the story of his great uncle's service and sacrifice.

Private Phillip O'Neill, - 1st Battalion, Auckland Infantry Regiment, Service number 2968. Phillip was born on 19 Feb 1889, the first child of Irish immigrants Felix O'Neill and Margaret O'Conner, who had settled at Glenham, just south of Wyndham in Southland. He was the eldest of nine children, and two of his brothers also served during WW1. Phillip was living and working around Omarama (probably as a ploughman, teamster or farm labourer) when he was called up as part of the 18th Reinforcements, and enlisted on June 29, 1916. According to his death notice in the North Otago Times, Nov 7, 1917 "... from the Omarama District, where he was well known, having worked there and on surrounding runs for many years." His service record shows he arrived for training at the NZEF Sling Camp on Salisbury Plain, England in late Dec 1916 and was in France at the start of February 1917. On February 24, Phillip temporarily joined the 300 sappers of the New Zealand Engineers Tunnelling Company which was busy digging the 4.3 kms of tunnels in preparation for the Battle of Arras (April 9 to May 16). This involved digging three tunnels under the German lines, which were then blown open to allow the British Infantry direct access to the German trenches. The tunnellers were withdrawn from the tunnels prior to commencement of the battle. On April 12, Phillip re-joined the 1st Battalion of the Auckland Infantry Regiment, near Passchendaele.

He survived the Battle of Messines (June 7 to 9) and the Third Battle of Ypres which included New Zealand's blackest day, October 12, when 845 men were killed within hours. However, his luck ran out when he was killed in action a few day later on October 18, 1917 - the same day the Canadian troops arrived to relieve the New Zealanders at the front. He was first buried in the field "between tank and road" but as the battle lines moved, his body was shifted to Spree Farm Cemetery, and then after the war to his final resting place in New Irish Farm Cemetery.

Read more here:

Anthony BYLEDBAL, "Tunnelling under Arras", History of the New Zealand Engineers Tunnelling Company [Online]. URL: <http://www.nztunnellers.com/history/tunnelling-under-arras.html>

1917: Arras, Messines and Passchendaele', URL: <https://nzhistory.govt.nz/war/western-front-1917>, (Ministry for Culture and Heritage), updated 14-Sep-2017



# It was our day in the sun

Almost 500 people enjoyed a day out exploring nine of Omarama's gardens last weekend. Although the final figure is not yet in, it is estimated the Omarama High Country Garden Tour, a fundraiser for the Omarama Community Centre sports facility, organised by the Omarama Residents' Association, raised between \$30,000 and \$40,000. A full report and list of acknowledgements will be in the December Issue of the Gazette. In the meantime, we acknowledge the generosity and hard work of those gardeners without whom it would not have been possible.

Thank you all - you did us proud!

Kate and Bill Sutherland – Benmore Station, Jemma and Richard Gloag – Buscot Station, Mary Lou and the late Don Blue – The Briars, Karen Ward and Kate Wilson – Total Interiors, Noeline and John Gillies – Rakiura, Lex and Jan Perriam – Lex and Jan's Place, Emma and Andy Moore – the old Killermont Homestead, Ann Paterson - Granny's place, Merino Lodge, Annabelle and Richard Subtil - Omarama Station.

More 'thank yous' to come...

To view all the photos:

[https://www.facebook.com/pg/omaramagazette/photos/?tab=album&album\\_id=1935489363146909](https://www.facebook.com/pg/omaramagazette/photos/?tab=album&album_id=1935489363146909)





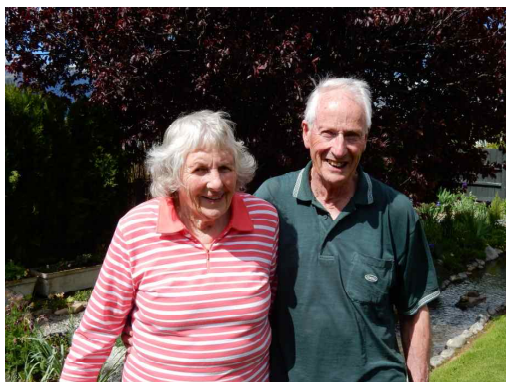
# An extra special 'thank you' for a generous donation

On Saturday, Hannah and Tara Parsons, and Gemma and Laura Patterson set up a stall at Granny's place, Ann Patterson's Merino Lodge, to raise funds for the Omarama School camp, which is on this week.

With minimal help, they managed the project together and sold, among other things, plants and sweets to visitors taking part in the Omarama High Country Garden Tour.

They raised about \$500 and from this made a donation of \$100 to the garden tour fundraiser, leaving them with \$400 which allows them to select an activity while on the camp, in Christchurch.

*Photo at right: Wendy Parsons*



# Nau mai, Haere mai, welcome to Omarama

It's big, it's red, it's flashy, it has all the bells and whistles and a ladder, and "it's ours". Omarama's new fire truck has arrived.

The 2007 Iveco Eurocargo rescue tender slipped quietly into town, last month. It's come from the coast - Hokitika - and it already has our name on it.

"It's nice to drive... and yes, it's ours," Terry said, that's Omarama Volunteer Fire Brigade chief fire officer Terry Walsh.

Omarama volunteer fire firefighters - Graham McLean is pictured here - have had the opportunity to have a bit of a test drive.

There were wide smiles all round, it's a fact!

At present, the truck is in Dunedin for a "fit-out" to make it ready for the tasks on this side of the alps.

A community function is planned to give the new truck its official welcome.



---

## Our thoughts are with you, Frank and Carol

For more than 20 years Californian fisherman Frank Monaghan has travelled with friends to Omarama to give the trout a bit of a scare and have a beer at the pub. This season he's decided to give it a miss. He and Carol will take their break in Australia. His home and winery, Château Garnier of Napa, are close to the out-break of the wildfires in California.

This note came from Frank, Saturday, October 15

*"Thank you for your thoughts.*

*The fire line on Jameson Canyon is about 4 miles (6.5 kms) from my house.*

*There is a shelter at the high school located on the corner.*

*So far my friends' houses, closer to the fire, have been protected including our winery.*

*However high winds are predicted for tonight, not a good thing for the fire fighters, over 9,000 of them fighting the many fires in the hills.*

*The last estimated I read was over 9,500 houses/buildings burned.*

*Frank"* We have since heard Frank and Carol remain safe.

# # POTM Pet of the Moment - Patch

There was an extra special arrival at Omarama's Top 10 last month. Seriously cute but with a bit of a shady side, young Romney ram lamb Patch was keeping guests entertained and giving his staff, Tony and Jess Chapman, the run-around, demanding regular bottle feeds.

When Omarama Gazette arrived to interview the 'child' star he was already bleating loudly about needing roomier quarters befitting his new status as celebrity (careful now, it's 'celebrity' not 'celebration') lamb. Guests, particularly younger visitors, were thrilled to be able to help out with the feeds and Patch was indulging his new fan club with regular 'selfie' opportunities, Tony said.

Photo:

*#POTM Patch, the Omarama Top 10 Holiday Park camp lamb with Jess Chapman*



## Justices of the Peace

**JPs are available by appointment to:**

- \* Witness documents such as applications for citizenship
- \* Certify copies
- \* Take declarations, affidavits and affirmations

**The service is free of charge**

**To make your visit quick and easy:**

- \* Do not sign anything beforehand
- \* Do take photo identification
- \* Remember to take the original as well as the copy to be certified
- \* Check that a New Zealand Justice of the Peace can complete your documentation



**Malcolm McMillan, Lake Ohau Village**  
438 9798 027 438 9798



**Georgie Robertson, Omarama**  
438 9554 027 4861 525



# The Noticeboard



To have your community notice included here email: [omaramagazette@gmail.com](mailto:omaramagazette@gmail.com)

**The final service at St Thomas' Combined Church is 2pm, Sunday, November 5.** All welcome (see more information over)

**Congratulations to Lindsay Purvis** who is the new Otago Rural Support Trust Waitaki and Central Otago coordinator.

**Please note change of hours:**

The Kurow Medical Centre holds a clinic 8.30am to 1pm, and 2pm to 5pm, on Tuesdays, at the Omarama Community Centre. Please phone Kurow Medical Centre, 03 436 0760, for appointments. On Fridays phone 0274 347 464 because the Kurow

Centre is closed. (read more over)

**The 2017 South Island Regional Glider Races** are on November 18 to 25 at Omarama Airfield.

**Technical hitches and glitches:** Omarama Gazette subscribers with a vodafone email address -vodafone, ihug,wave, pcconnect, paradise.net, clear.net es or quik - will have to switch to a new email address before the end of November as the Telco plans to axe these services. Please also phone 021 294 8002 or email [omaragazette@gmail.com](mailto:omaragazette@gmail.com) so your subscriber details can be updated.

**The Omarama Playgroup has its annual meeting 7pm, Wednesday, November 8, at the playgroup rooms,** Omarama Community Centre. All welcome. It meets at 9.30am each Wednesday during the primary school term at the Omarama Community Centre. For more information phone Petrina Paton 027 345 6192 or Jess Toole 021 020 53242

**In case of emergency:** to prevent any confusion about the location of Lake Ohau Alpine Village in an emergency, the following points should be noted: When phoning 111, advise that Lake Ohau is in South Island and the nearest cross road is State Highway 8 and Lake Ohau Road. Also mention that Lake Ohau Alpine Village is on the shore of Lake Ohau, and is 20 mins (40 km) from both Twizel and Omarama. This will assist the operator to find the required information to enter location in the system and allowing the call to progress to the next screen in the system.

**Bridge Club** - The Omarama Bridge Club meets on a regular basis and would welcome new members. If you are interested please phone Sylvia Anderson 438 9784 or Ann Patterson 438 9493.

**The Omarama Community Library** has begun its summer hours. It is open 7pm to 8pm Tuesdays, and 9am to 10am Wednesdays and Saturdays, at the Omarama Community Centre. Contact Glenys: 027 611 8880

**Plunket Line:** 0800 933 922

**Omarama Plunket Committee:** Lisa Crawford, phone 021 126 3113

**Car Seat Rentals:** Christine, phone: 03 435 0557 or 027 208 0362

**Breastfeeding Works:** Claire Hargest-Slade 03 684 3625, 021 493 863  
clairhs@me.com

**The Omarama Model Aircraft Club** meets 9.30am to 12 noon Wednesdays and Sundays at its fly-ground at the Omarama airfield. All welcome. Phone Graham McLean 03 438 9832.

**The Omarama Volunteer Fire Brigade** meets 7pm each Wednesday and has its meeting at 7:30pm on the third Wednesday of the month. New members welcome.

**The Omarama Golf Club** - Saturdays tee-off 1pm,

**Please note twilight nine-hole golf now Thursdays**, tee-off 6pm, all welcome.  
Club Captain Adrian Tuffley 027 3478276. [www.omaramagolfclub.co.nz/](http://www.omaramagolfclub.co.nz/)

**To read more, enjoy more photos and view videos check out our  
Facebook page and website  
[www.facebook.com/omaramagazette/](http://www.facebook.com/omaramagazette/) and [omaramagazette.nz](http://omaramagazette.nz)**

---

**Advertising pays for  
production and distribution.**

To find out about publication and close-off dates,  
and how much it costs to place your advertisement,  
please phone 021 294 8002, 03 438 9766 or  
email [omaramagazette@gmail.com](mailto:omaramagazette@gmail.com)

**The December issue of the  
Omarama Gazette  
is Wednesday, December 6, 2017.  
Please submit copy by  
Friday, December 1.**

# The Community Reports

## Upper Waitaki Police news



Hi all, another Labour Weekend done and dusted and thankfully no major crashes or incidents in our neck of the woods. The majority of the weekend saw me at Otematata policing the high school students at Loch Laird and Otematata itself, more on that shortly. Disappointingly during the 5 day period I was working, I also caught three drink-drivers, a 22-year-old male from Timaru who blew 801mgms of alcohol per litre of breath. The limit is 250mgms for an adult. The second was a 23-year-old local man from Kurow-Hakataramea, at 701mgms and the last Einstein was a 19-year-old from

Albury, who blew 237mgms, he is of course under 20 years where the limit is 150mgms. This person also attempted to evade me by speeding off once he saw that I had turned around to stop him. He is now facing a second charge of driving at a dangerous speed.

**Otematata.....**I've got to say by the end of the long weekend my patience was gone. During the weekend I dealt with numerous children aged from 15-18 years of age, so when I say kids I mean anywhere in that age group. The majority of offences were for breaching the liquor ban and under 18 year-olds with alcohol in a public place. Of course if you throw in some alcohol and then have a large group of drunk teenagers in one area there are going to be issues, namely disorder and damage caused to property. Thankfully, the latter appears to have been minimal but still shouldn't have happened at all. Same with the disorder why should the residents of Otematata have to put up with kids running around drunk, shouting swearing, fighting, smashing bottles etc. This year there seemed to be an increase of underage kids walking around with alcohol. Where were the parents? I hear you ask, the majority of them were still at home in Oamaru. It's pretty frustrating, the police are NOT A BABYSITTING SERVICE. For example, I and another officer had to spend about two hours babysitting a 15-year-old female who was heavily intoxicated while we waited for her mother to come and get her from Oamaru. I spoke with a lot of kids aged around 16-17, aimlessly walking around Otematata, this was after 11.30pm – and some cases, after midnight...really parents? Do you know where your kids are, what questions have you asked prior to saying "yes, you can go to Otematata?" where every year, police

**'The Community Reports' is  
dedicated to news  
from clubs, groups and sports teams.  
Contributions are welcome.  
omaramagazette@gmail.com**

have to roster on extra staff to deal with the disorder, assaults and wilful damage complaints due to intoxicated and unsupervised teens that come up from Oamaru. There were a couple of addresses we went to where there were in excess of 20 kids staying the night and being supervised by one adult, who at the time was at another address, or another where there was very little what I would call responsible adult supervision due to the fact the adults were as drunk as the kids.

I would also like to remind some people who appear to think that it's okay to sit outside until early hours of the morning and shout at each other to have a conversation, which is due to the fact they can't hear one another because of the loud music they've got cranking as well. The same rules apply in Otematata and Omarama as they do in any other town. I understand you may be on holiday and I'm not out to ruin your fun, but please, some consideration for your neighbours would be good, and not just your immediate neighbours but the ones behind you or even a few doors down, noise carry's pretty far at night. If you have a noise complaint, in the first instance you should contact (WDC) Noise Control on 0800 108 081, failing that, police.

Lastly it's been brought to my attention that there are some keyboard warriors out there moaning about the police response on good old blabberbook. I would say to them that before you criticise perhaps you should be looking at who or what is the main cause of the actual problem, the real answer is not the police. I understand there are expectations for us to keep the community safe, please bear in mind we can't be everywhere at once, we try to do the best we can with the numbers we have. In regards to this, Pleeeeeease remember, if you have an issue come and see me, or if you prefer Senior Constable Peter Scott, at Kurow, or the Oamaru police before getting on the computer and moaning, what does that achieve? I'm not going to read it, I'm not on Facebook. It just generates more negativity which doesn't do you, me or our community any good. I don't bite and welcome any feedback negative or not, but I will offer a challenge, if you have some criticism it would be good if you can offer a solution as well.

Thanks and stay safe, Bean.

- Senior Constable Nayland Smith  
03 438 9559, email: [Nayland.smith@police.govt.nz](mailto:Nayland.smith@police.govt.nz)

---

## Omarama Volunteer Fire Brigade



We had 9 calls for the month of October and it was a mixture right across the board.

Our new appliance training has gone extremely well with the vehicle now back in Dunedin and we are waiting on it to be fitted out. We will hopefully get it back shortly and it will permanently remain in Omarama.

We are seeking new members as we have sadly had a couple of members resign so if you are looking to help your community out please pop down and see us on a Wednesday night or call into see me at the Mobil Garage at any time.

We are now in a restricted fire season so permits are necessary. So with the hot dry weather coming about, please be very careful and if you see smoke and are unsure please ring 111.

Be safe, Chief fire officer Terry Walsh

# St Thomas' Combined Church

## **St Thomas Church Update - By Rev Ken Light**

**The last service in St Thomas's Church will held on Sunday, November 5, at 2pm.** It will be an inter-denominational service representing the three congregations that have used the building over the years. The Reverend Libby Smith, former Presbyterian minister in Omarama will be the preacher. At the end of the service the cross will be carried from the building and the main door closed and locked. The congregation will be invited to re-enter the building by the back door for coffee/tea and biscuits. The Omarama Community is especially invited to attend and invitations have been extended to past members and ministers living outside the district. **All are welcome.**

On Monday the furniture inside the building, mainly pews, chairs and benches, keyboard, communion table, lectern, baptismal font, will be removed from the building and stored. Some of the furniture will be stored in the Community hall to be used when future services are held. The rest, mostly pews and larger items, will be kept together and stored in one place. Some folk have been concerned about what will happen to the pews but we need to remember that the lease is for one year. We would expect that the lease will continue beyond the first year but that is a decision to be taken further down the track. It may be that the building will return to being a church and the pews again required. To get rid of any furniture and ornaments at this stage would be premature.

**On Tuesday 7 November** the building passes to the Tourism Waitaki Ltd. so that they can fit out the premises prior to opening on 1 December.

**Church officer: Kay Verheul :(03) 438 9538**

**Chair: Reverend Ken Light: 027 211 1501.**

**Secretary: Lee Kearon: 021 250 1060**





# Omarama Golf Club

*By Christine Bowman*

Last month we were delighted to support the 4-ball best ball tournament for the Fire Brigade with about 35 golfers of all levels. Golf is about having fun, plus having a go, and everyone did that. Thank you to everyone that contributed to this great event. The winners on the day were Kevin Wallis and Dave Grant with 49 stable-fords. Paul Bowman closest to the pin and nobody scored a 2!!

Our next tournament is in the New Year, 6th January 2018, so put the date in your diary now to bring family and friends.

Our twilight golf has now changed to a Thursday night 6 p.m. tee-off. We had some feedback that our current Wednesday night clashed with other local sports in the community, hence the change to allow more local participation. Feel free to contact Adrian 0273478276 if you would like more details.

Welcome to our new full members that have joined the last couple of months: Pip Cleverley, Greg Bramley and David Bruce. If you are interested in joining the club we have a number of options, please feel free to contact Christine Bowman (0272092320)

Now that daylight saving is here our Saturday Club day is 1.00 p.m. tee off. We are all looking forward to a great summer of golfing, so come join us.

**The Omarama Golf Club, Saturdays tee-off 1pm, twilight nine-hole golf Thursday tee-off 6pm, all welcome. Club Captain Adrian Tuffley 027 3478276.**

**[www.omaramagolfclub.co.nz](http://www.omaramagolfclub.co.nz)**

*Photos: Omarama chief fire officer Terry Walsh arrives with his new golf buggy; Omarama golf club member Ali Brosnan passes his card to fellow club member Christine Bowman; Club member and volunteer firefighter Greg Harper tees-off; Milly Ford and Adrienne Harper keep things sizzling;*



# Omarama Residents' Association

The Omarama Resident's Association held its annual meeting last month when Ross Gold stepped down as chairperson and off the committee and long-serving committee member, Ann Patterson, was elected to the position.

In other changes Charlotte Cook took over from Glenys Dawson as treasurer. Glenys was awarded a Waitaki District citizen's award earlier in the year for her extensive volunteer work for the centre.

Craig Dawson remains as secretary for the new term.

In his final report Ross noted progress made in the past 12 months.

This included the appointment of a hall curator - Charlotte - completion of the gardens and the restoration of the damaged boundary fence and interior wall as well as other maintenance tasks.

The Omarama High Country Garden tour, organised through the work of the garden tour sub-committee, marked the launch of a significant fundraising effort to set up a sports facility for the town.

The Community Centre continued to be well used for farmers' meetings, first aid courses, weddings, upholstery classes, school concerts and other functions.

A medical clinic, the community library and playgroup use the facilities on a regular basis.

Finances are sound with both current and project accounts having "excellent balances".

"My thanks to all committee members and our secretary Craig, for all the work during the year and attendance at meetings. This is my last report as chairperson and committee member as I have decided to step back which will allow a local to become involved. I thank you for your support over the many years I have been on the committee. I have enjoyed our association and am proud of what we have achieved. We can all be proud of the Community Centre which is now well-used and a great asset for the district we all enjoy being a part of."

Ross Gold, departing chairperson.

**Next meeting: 7.30pm, Thursday, November 16.**

**Contacts: Ann Patterson, chairperson 03 438 9493, Craig Dawson, secretary 0274389132**

## OMARAMA COMMUNITY CENTRE HALL HIRE

**To make a booking for an upcoming event or for more information about hall hire and availability please contact Charlotte Cook, 027 940 1648, or email [charlotte.omarama@gmail.com](mailto:charlotte.omarama@gmail.com). Keys and fobs are collected from GlenCraigs**



# Omarama Rodeo Club



## Mrs Brownzs Boys Show

Was an entertaining night of fun and laughter, THANK YOU to all our sponsors and generous crowd, we raised over \$6000 for the Rodeo Club, which will go towards providing shade shelter for animals.







A big 'Hi' from the Staff and Children of Omarama School!

What a great way to start the first day of term four. We got an unexpected visit from members of Team New Zealand who brought the America's Cup into school to show us. It was an amazing experience for everyone to see this iconic trophy, and one I'm sure we all will remember.

The junior room have been working on their reading. As part of this focus the class has been participating in the Hells Pizza Reading Challenge. Every member in the class successfully achieved their reading goals and we all enjoyed our Pizzas. Thanks Hells Pizza !

The senior room has been investigating " food for thought" and have been discussing healthy foods. They were surprised to find that some breakfast cereals have three times the required amount of sugar in them. Later this term they will be working together to plan and make a healthy lunch for all of us.

Next week the whole school is off to camp in Christchurch at Omaka Scout camp. The children and staff are all looking forward to this event and I am sure we will have photos and stories to share on our return.

Nga Mihi, - *Kim McKenzie, Principal.*     *Photos: supplied*









**When circumstances beyond your control lead to a rural business crisis be it financial, climatic or personal the Rural Support Trust is ready to assist. Services are free and confidential.**

**0800 RURAL HELP (0800 787 254)**

## **We are changing our clinic days!!**

You may have heard on the grapevine that Kurow Medical Centre is now opening up another satellite clinic in Twizel. This means that as a registered patient you are able to attend all three of our clinics – Kurow, Omarama and Twizel at the enrolled patient price.

**Unfortunately we will be reducing our Omarama Clinic to one day a week (Tuesday).**

To make appointments for all clinics, order repeat scripts or make enquiries please contact Kurow Medical Centre 03 436 0760 (Monday to Thursdays). On Fridays you can contact us by phoning 027 434 7464

Kurow Medical Centre – 8 Wynyard St, Kurow

Open Monday to Thursday, 8.30am to 1pm and 2pm to 5pm

Omarama Satellite Clinic – Omarama Community Centre

Open Tuesdays, 8.30am to 1pm and 2pm to 5pm

Twizel Satellite Clinic – 3a Benmore Place, Twizel

Open Monday and Friday, 8.30am to 1pm and 2pm to 5pm

Twizel Nurse-only clinic - Open Wednesday 8.30am to 1pm

## **Kurow Medical Centre**

8 Wynyard St, Kurow

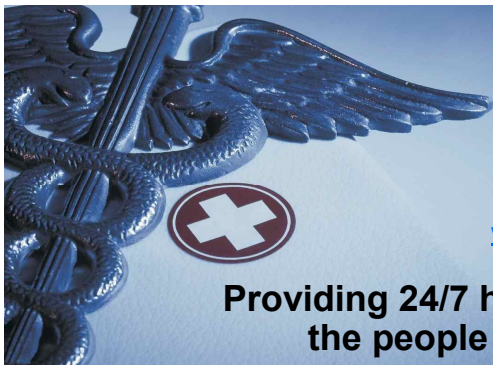
P: 034360760 F: 034360780

E: [info@kurowmedicalcentre.org.nz](mailto:info@kurowmedicalcentre.org.nz)

W: [www.kurowmedicalcentre.org.nz](http://www.kurowmedicalcentre.org.nz)

[www.facebook.com/kurowmedicalcentre](https://www.facebook.com/kurowmedicalcentre)

**Providing 24/7 health care and support to the people of the Upper Waitaki**



# “Get Well, Keep Well” with the Kurow Medical Centre

*By Mischa Clouston*

Gardening Season is ahead, and TETANUS is something to be mindful of. Unlike other vaccine preventable diseases, tetanus is not transmitted from person to person. Since the toxin is so potent, very low quantities are required to cause disease. Worldwide, at least one million cases of tetanus need hospital treatment each year. In developed countries, injury causes around 7 out of 10 cases.

Universal infant immunisation with a tetanus toxoid vaccine began in 1960 in New Zealand. Tetanus toxoid is an inactivated form of the toxin.

Almost all the recent cases of tetanus in New Zealand, both adults and children, occurred in individuals who had not received a complete primary course of a tetanus-containing vaccine. A total of 31 tetanus cases were reported from 1997 to 2014; of whom, two adults over 70 years of age died. Animals including humans can carry *Clostridium tetani* in their intestine and excrete the bacterium and spores with their faeces into the soil. The bacteria and/or spores can be introduced into the body through any wound, no matter how minor. Rural New Zealand children are at greater risk than, a child growing up in very large urban areas with less contact with soil..

Once in the wound, the spores mature into bacteria that releases a toxic chemical (tetanus toxin). The toxin is transported to the central nervous system, preventing the nerve signals that allow muscles to relax to be transmitted. If left untreated paralysis of the respiratory muscles can cause death. There is no treatment for tetanus.

Management is aimed at reducing the spread and effects of tetanus toxin in the first instance, and supporting the patient as the disease takes its course. Wounds that are contaminated or have lots of tissue damage, and deep puncture-type wounds have the highest risk of containing *Clostridium tetani*. Chronic wounds, such as ulcers, can also be infected. In New Zealand, most cases of tetanus occur following a minor injury. If you are a gardener, avid animal lover, farm worker, or do work in dirty places then its a good idea to make sure you are up to date with your Tetanus Booster. We can offer these anytime for you with the nurse, and for some age groups the vaccine may be free.

Call in next time you are passing and see if you might be due to get this important vaccination up to date.

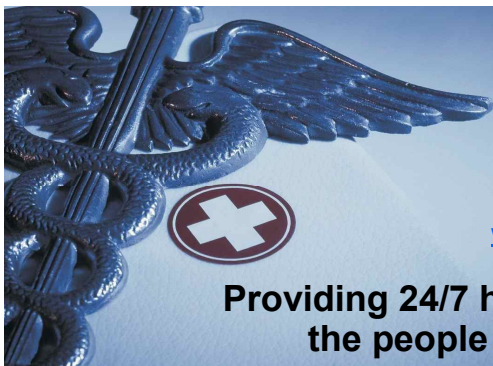
## Kurow Medical Centre

8 Wynyard St, Kurow  
P: 034360760 F: 034360780

E: [info@kurowmedicalcentre.org.nz](mailto:info@kurowmedicalcentre.org.nz)

W: [www.kurowmedicalcentre.org.nz](http://www.kurowmedicalcentre.org.nz)  
[www.facebook.com/kurowmedicalcentre](https://www.facebook.com/kurowmedicalcentre)

**Providing 24/7 health care and support to  
the people of the Upper Waitaki**



# THE AMAZING FIVE

## OMARAMA SCHOOL FUNDRAISER

FRIDAY 1<sup>ST</sup> DECEMBER 2017

The BIG 5 revamped. Be prepared for twists and turns you never expected!

**TEAMS OF  
FOUR**

LIMITED TO 16 TEAMS SO BE IN QUICK!

**ENTRY FEE  
\$400**

PER TEAM INC. ENTRY, LUNCH & DINNER

**OMARAMA  
GOLF CLUB**

**ENTRIES CLOSE  
1<sup>ST</sup> NOV 2017**

Following the race will be a dinner & an auction with great items on offer.

**DINNER & AUCTION ONLY TICKET \$25**

Limited tickets for those who want to come along to the dinner and auction to be purchased by 1st November \$25 per head.



Contact Emma Moore: 027 635 5664 | [emma24moore@gmail.com](mailto:emma24moore@gmail.com) to enter your team or for more info

# Omarama Gazette 2018 Calendars



**\$20 each**

Proceeds from the sale of each calendar  
will go to the Omarama Residents'  
Association projects fund

To order, phone:  
(03) 438 9766  
021 294 8002

or email [omaramagazette@gmail.com](mailto:omaramagazette@gmail.com)



# Waitaki District Council - news in brief



**Council controlled organisation The Omarama Airfield Ltd**, last month presented its 2016/2017 annual report. There were about 1500 visitors throughout the year and 20 people were employed through the season.

Read more here: <http://www.waitaki.govt.nz/our-council/council-meetings/agendas-and-minutes/AgendasAndMinutesDocs/25%20October%202017%20Council%20Meeting%20Agenda%20Papers%20PUBLIC.pdf>

**Waitaki District Council chief financial officer Paul Hope** has been appointed as director to the North Otago Irrigation Company.

He replaces former chief executive Michael Ross whose term ends December 31.

Mr Hope will hold the position until October 2018 when it will be reviewed.

In 2005 the council loaned the company \$10 million for stage one of its scheme.

It was repaid in 2015 when a further \$17 million was loaned to fund the extension of the scheme.

**Chief executive Fergus Power has introduced an internship programme** to the council. It is hoped to attract New Zealand and international students to the district to work on projects that would otherwise not be undertaken because of time or financial constraints. Students are expected to spend three to six months in the district working on projects that complement their skills. The council has drawn up a set of pastoral care guidelines to ensure welfare of interns is catered for. The programme could begin as early as February 2018.

**Changes made to the Resource Management Act** earlier this year and which came into effect last month are expected to make it easier to fast-track development.

The changes allow the council to waive consents for minor issues and introduce a fast-track 10-day resource consent process for some activities.

A key change is making activities, known as 'boundary activities' – e.g. yard setbacks, height restrictions or fence rules - exempt from a resource consent, as long as the applicant can secure the written approval of the affected neighbour/s.

Also, the process for considering when resource consent applications should be publicly notified have been changed.

This changes how certain rules in the Waitaki District Plan are applied.

The district plan is under review and ratepayers are asked to consider how best to change the present rules.

<http://www.waitaki.govt.nz/our-services/planning-and-resource-consents/districtplan/districtplanreview/Pages/default.aspx>

## [www.waitaki.govt.nz](http://www.waitaki.govt.nz)



## **From the Ahuriri Community Board meeting, Monday, October 16, in Otematata.**

### **Concerns Otematata's SH83 bridge is at risk in future floods**

Although, work has been done by the Waitaki District Council to reduce the risk of the Otematata River flooding its Boat Harbour camping ground, serious concerns remain that more needs to be done upstream of the SH83 bridge or it and other key infrastructure could be at risk in future high flows.

In January, the river rose rapidly, peaking at 450cumecs, causing extensive flooding of the area at the mouth of the river.

Work to reduce future risk to the camping ground – shifting gravel deposits and removing trees near the river mouth to allow better flow - has been completed by the council. However, at the Ahuriri Community Board meeting questions were raised about the need for further work upstream of the bridge.

In the public forum, Otematata resident Carl Carlson, whose property was also flooded in January, said, since then flood events had become more frequent.

Within one four-week period the river had flooded three times and it appeared it was flooding at comparatively low flows, he said. He was not able to get to his property by his usual route - a paper road – the same one which council workers used to get to the Otematata water supply pumping station. He believed remedial work was required upstream of the bridge to fix the problem.

“The main issue is the river ... it needs heavy machinery to work upstream of the bridge...150m from the bridge ... [plus] there's a colossal amount of trees still to come down, they'll get caught under the bridge,” he said.

Board member Brent Cowles agreed and said it appeared the river only needed to be running at 50 to 60 cumecs for it to trigger flooding.

“Another 100 cumec flood and it will come through the camping ground.”

Board member Vicky Munro said it not only put the camping ground and town's water supply at risk but implications were the bridge could be washed out and with it cabling it carried, like internet fibre.

It was also of concern Munro land - Rostriever- had to be used to gain access to the pumping station, when the paper road was unusable, she said.

Ahuriri Ward councillor Craig Dawson said each time there was a flood it lifted the level of the shingle in the river upstream of, and under the bridge.

Board chairman Graham Sullivan said it was a “very, very serious issue as far as the town goes”. The build-up of shingle and fallen willow trees on the south side of the SH83 bridge meant when there was a “fresh flow into the river, say 75cumecs,” it was now flooding on both sides of the bridge on the south side.

“It is a matter for ECan, NZTA, Linz, Doc and the Waitaki District Council to try and get a working party to move forward with this serious situation.”

Community Board member Calum Reid said it needed all parties “to come together to sort out the problem”.

“It needs some practicality applied to it.”

Waitaki mayor Gary Kircher said so far the council had fronted up for the cost of the remedial work.

From previous discussions he believed there was little likelihood of getting funding from ECan.

***Continued over...***

### ***...Continued***

However, the council would seek their cooperation to gain the relevant consents. And, there needed to be a “conversation” with NZTA to see what their plans were.

“If we have got the ability to put the money in there, then they should too.” He said.

### **Omarama Campervan dump station**

It appears the design of the Omarama Campervan dump station is causing problems for the bigger models of vehicles which use the site.

Mr Sullivan said house buses and large campervans were struggling to empty tanks because the camber of the car park was set at the wrong angle to the dump site.

He had been to assess the problem which would be rectified as soon as practically possible.

As well, there had been issues with the plumbing and another contractor had been brought in to fix this.

“It’s very disappointing and its ongoing...I would like to know what happened.”

Mr Reid said there needed to be an investigation into why the problems occurred.

**The next Ahuriri Community Board meeting is  
3.15pm to 5.15pm, November 27 at the  
Omarama Community Centre**



---

**The next meeting of ECan’s Upper Waitaki Zone  
Committee is scheduled for 9.30am Friday, November 17,  
at the Mackenzie Country Inn, Twizel.**

**Minutes and agendas are posted at:**

**<https://ecan.govt.nz/your-region/your-environment/water/whats-happening-in-my-water-zone/upper-waitaki-water-zone/>  
[www.ecan.govt.nz](http://www.ecan.govt.nz)**



## COMING EVENTS - NOVEMBER 2017

Membership renewal for the social club is **1st November** \$5.00 per member.  
**ALL SOCIAL CLUB MEMBERS.** Be at the hotel bar at 6.00pm every Tuesday night and if your number is drawn you will win a \$30.00 bar tab, if the drawn member is not present, the tab will jackpot to the following week.

### **Melbourne Cup Day- GALLOP IN AND CELEBRATE MELBOURNE CUP 2017** **Tuesday, 7th NOVEMBER 2.00PM START**

Join us for a fun afternoon of champagne, nibbles, and fashion.  
 Free glass of champagne on arrival, plus nibbles throughout the afternoon  
*3X sweepstakes for first, second, and third placing*  
*\$2.00, \$5.00 And \$10.00 bets with random horse selection*  
**PRIZES FOR:**



Best dressed couple



Best ladies outfit/hat

Best dressed man



**10th November at 8.30pm** Our local entertainer Bobby Brown  
**25th November** Band LIVE WIRE starting at **9.00pm**

### **BOOTS AND JANDALS HOTEL SPUD IN THE BUCKET COMPETITION**

**\$5.00 FOR YOUR SPUD AND BUCKET**  
**PLANT IT- LOVE IT -WATCH IT GROW**  
**BRING IT BACK TO BOOTS AND JANDALS HOTEL**  
**DATE TO BE CONFIRMED**  
**BBQ DINNER, PRIZES AND HEAPS OF FUN**  
**SEE ONE OF OUR BAR STAFF FOR YOUR ENTRY, SPUD AND BUCKET.**



Keep an eye on the Live entertainment signs on our fence for more bands and entertainment.

### **OUR NEW SUMMER MENU IS OUT**

Check out our New Seasons Lunch and Dinner Menu  
 Fresh Hearty Country Cooking!!!!

**CHEERS FROM THE TEAM AT BOOTS AND JANDALS**

# The Good Food News from GlenCraig's Pantry

## KIDS—20 EASY LUNCHBOX IDEAS:

### *Thanks to Ceres—these ideas are so good!!*

Coming up with kids school lunch box ideas, it's a bit of a balancing act really between packing something that's as equally nutritious as it is interesting – so your kids actually eat it. Last thing you want is discovering a stash of mouldy sandwiches at the bottom of a backpack! And in saying that, packing a lunch box where a sandwich isn't the main even can be pretty challenging at times.

Equally important though, besides packing nutrient dense foods that will fuel your kids throughout the day, is being able to prep a lunchbox fast – either the night before or first thing in the morning. Another time saver – if you're yet to embrace the bento, these boxes make it super easy to pack nutritious lunches loaded with wholefoods, and not plastic wrap.

Scroll on for 20 plant based wholefood heavy lunch box ideas that will give kids all the energy they need without consuming too much of yours!

[www.ceres.co.nz/blog/20-easy-lunch-box-ideas-happy-healthy-kids/](http://www.ceres.co.nz/blog/20-easy-lunch-box-ideas-happy-healthy-kids/)



## **3 INGREDIENT—EASY PEANUT BUTTER FUDGE from CERES..**

1 cup [Organic Coconut Butter](#)

$\frac{3}{4}$  cup [Organic Peanut Butter](#)  
[Smooth, Original](#)

4 tablespoons [Organic Coconut Nectar Syrup](#) (or Maple Syrup)

Add ingredients to a double boiler.

Heat over medium heat for 4-5 minutes, stirring constantly, until all ingredients are combined and you have no lumps.

Line a small loaf pan approximately 10cm x 15cm with plastic wrap and pour the mixture into it. Use a spatula to even out your fudge. Refrigerate for around 2 hours or until set.

## **GLENCRAIGS Wholesale Pantry**

**Omarama (03 4389 816)**

## **HERBAL ORGANIC PUKKA TEAS**

Have you tried our popular Pukka Teas yet?

A huge range of delicious herbal teas—you can pick from 25 different flavours, or you can try a sample mixed box of 5 flavours. Beautifully packaged—they make wonderful gifts..

**NEW FLAVOURS—Wonderberry, Motherkind Baby, Supreme Green Collection**

**Our price only \$8.50 per box (elsewhere up to \$12.99+)..**





# TOTAL INTERIORS

*"LOVE THE SPACE YOU LIVE IN"*

## Gifts and Collectibles

Shop open every weekend 10am to 5pm

Design studio and workroom open by appointment all year around

For friendly, professional service

call Karen 0800 808 600 for a free measure and quote



22 Cirrus Place, Omarama

Phone: 0800 808 600 or 027 438 7853

Website: [totalinteriors.co.nz](http://totalinteriors.co.nz)

Email: [total.interiors@xtra.co.nz](mailto:total.interiors@xtra.co.nz)

Follow us on facebook:

[www.facebook.com/Total-Interiors-Shop-Showroom-423070197895602/](https://www.facebook.com/Total-Interiors-Shop-Showroom-423070197895602/)

**For all your Landscaping,  
plants, garden,  
quarry materials and  
firewood supplies**

**Fridays  
10am - 2pm  
Saturdays  
9am - 3pm**

**Opening again on  
Friday 13th October**

**Cra Prohibition Rd & SH8  
Oamarama  
0276355664**

**[www.facebook.com/supplymooreyard](http://www.facebook.com/supplymooreyard)**

# Building New Zealand.



From great homes to sleepouts, garages, and farm buildings Versatile can build it all for you. Our new Oamarama showhome will be open early 2018!

**0800VERSATILE • [www.versatile.co.nz](http://www.versatile.co.nz)**



# Omarama Storage



- Secure Lockup Storage
- 3.6m h x 3m w entry
- Short & Long term

Don't let the weather deteriorate your caravan, boat or motorhome over winter. Spaces available now.  
Contact Bridget – [bridgesp@xtra.co.nz](mailto:bridgesp@xtra.co.nz)  
or Ph /txt 021572798

**RESIDENTIAL – COMMERCIAL – FARMING  
BUSINESS – MOTELS – DEVELOPMENT**

**Professionals**

Steve is now specializing in Real Estate in the Waitaki Valley, he has resided in Otematata for the past 9 years. Steve enjoys helping people build a better future; whether it's moving up the property ladder or buying their first home, business or commercial venture. Steve brings a huge wealth of experience in all aspects of property – big or small!

**From Residential to farms  
Steve is the agent to call**

**OFFERING SUPERGOLD CARD HOLDERS  
A COMMISSION RATE DISCOUNT OF 15%  
ON STANDARD COMMISSION RATES**

**Steve Dalley**

van Schreven Holdings Ltd trading as van Schreven Real Estate  
MREINZ - licensed real estate agent REAA2008  
211 Thames Street, Oamaru  
p 03 434 9880 c 021 768 719  
e [steve@oamaruhomes.co.nz](mailto:steve@oamaruhomes.co.nz)  
[www.oamaruhomes.co.nz](http://www.oamaruhomes.co.nz)



## GLENCRAIGS CLOTHING



***New FISHING & SPORTS Clothing NOW IN!!  
Huge range of AERTEX shirts -ladies' and men's..  
SUNHATS & JANDALS GALORE  
2 clearance racks \$30 or less!***



 **Columbia**  
Sportswear Company

03 4389816 Email [glencraigs@xtra.co.nz](mailto:glencraigs@xtra.co.nz) /  
[www.glencraig.co.nz](http://www.glencraig.co.nz)  
Like us on Facebook to see and hear  
about new arrivals..

## SPRAYING

**T & J Golder Ltd**

Spray truck with Hardi 24m boom, GPS guidance and auto shut-off.  
John Deere Gator with 8m boom, 100m electric hose reel,  
7.2m carpet roller and dual wheels.

Specialists in agricultural chemical application  
Operating locally

**Call Travis 021 710305**



# The Directory



## Hank Verheul

**Builder**  
Quality building

Ahuriri Drive  
PO Box 28  
Omarama  
Mobile 027-221-5192  
Home 03-438-9538

New housing  
Additions, alterations  
Maintenance  
Project management  
Contracting  
Insurance work  
Speciality tiling

"Quality workmanship guaranteed"



## Need some time just for you?

### Spoil yourself

Enjoy a relaxing massage.  
Call or drop in and ask about our local rates.

Phone:

03 438 9703

**HOTtubs**  
omarama

*BigSky*  
Bed&Breakfast

**Kay & Hank Verheul**

10 Ahuriri Drive, Omarama, New Zealand

Phone +64 3 438 9538  
Mobile 027 489 5149

Email hankay@xtra.co.nz  
www.bigskybnb.co.nz

## For advertising rates and guidelines

phone  
**021 294 8002**

or email  
**omaramagazette@gmail.com**



## For all your hydraulic requirements

Sales, service, design,  
hose fittings & spare parts  
**97 Racecourse Rd, Washdyke.**  
**Phone 03 688 2902**  
**www.scarlett-hydraulics.co.nz**



## Gary Sutherland



Ph 027 432 6615 anytime  
Ph 03 435 0170 office  
Email garys.twizel@ljh.co.nz

**Licenced Real Estate Agent**  
**REAA 2008**

## Lakes Coffee

Bean missing a good coffee?

**Neil Callick**  
**Barista**

*Covering the Waitaki Valley, Mackenzie  
and Waimate districts.*

*No function or event too small.*

**027 272 4729**  
**neil.callick@gmail.com**





## Tim McGregor

Twizel/Omarama  
027 488 0155

info@alpineearthmoving.co.nz

Earth moving  
House sites  
Landscaping  
Farm lanes/drains  
Tree removal

Operating a 3-ton & 12-ton digger

facials  
waxing  
hands & feet  
spray tanning  
skin care  
make up  
gift vouchers

  
**essence**  
SKIN & BEAUTY

Deidre Sutherland - Phone 027 686-8879  
Email: [essenceskinandbeauty@gmail.com](mailto:essenceskinandbeauty@gmail.com)



## Campbells Butchery

quality meats and smallgoods  
available at

**Kurow Foodcentre  
Otematata On the Spot**

**Mackenzie Supermarket  
and Twizel Four Square**

*For private processing of your cattle and  
sheep contact Steve on 03 43458780 Ext 4*



**LYNNE  
SINCLAIR**  
NZ Travel Brokers

**Your Mobile Travel Designer**

**Contact Lynne – who can offer  
you independent travel advice and  
find the right holiday to suit you!**

With over 30 years experience Lynne is part  
of New Zealand's fastest-growing  
travel brokering company.

Phone (03) 432 4172 | Fax (03) 432 4272 | Mobile (027) 432 4177  
Email [lynne@nztravelbrokers.co.nz](mailto:lynne@nztravelbrokers.co.nz)

TAAANZ Bonded Broker & CLIA Accredited Cruise Specialist

06170572-36-4

South Canterbury  
**Kindergartens**  
the first choice for your child's future

**ENROLMENTS  
NOW OPEN**

## Twizel Kindergarten



You get 30 free hours if your  
child is 3 or 4 years old like me.

The teachers are all  
qualified and registered.



There are spaces here for  
children aged 2-5 years.

We are a not for profit organisation and  
registered charity which means all the money  
received goes back to support your child's learning.



**Contact Head Teacher Carol Sinclair**

**Phone 03 435 0433**

**or call in to the kindergarten**

**135 Mackenzie Drive, Twizel**

# YOUR CARPET GUY

**CONTACT  
DETAILS**

Wouter Smit  
03 - 435 0116  
027 - 931 4207  
[wjcsmit@xtra.co.nz](mailto:wjcsmit@xtra.co.nz)  
**FACEBOOK**  
**YOUR CARPET GUY**

Servicing Twizel,  
Tekapo, Omarama  
& the  
Greater South  
Canterbury region

## WHAT WE DO

**CARPET CLEANING**  
- COMMERCIAL  
- RESIDENTIAL  
**UPHOLSTERY CLEANS**  
**STAIN REMOVAL**

**24/7 FLOOD RECOVERY**



-  **Spraying**
-  **Fertiliser Application**
-  **Firefighting/ Lighting**
-  **Scenic Flights**
-  **Lifting**



Servicing North Otago, South  
Canterbury and the Mackenzie  
Country.

The same experienced  
team under new management.

Office: (03) 4395656

Matt: (027) 227 8256

Email: [info@csihelicopters.co.nz](mailto:info@csihelicopters.co.nz)



**CENTRAL SOUTH ISLAND  
HELICOPTERS LIMITED**



## **Omarama TOP 10 Holiday Park**

1 Omarama Avenue  
Omarama 9448  
P: +64 3 438 9875  
Reservations: 0800 662 726  
[omaramatop10.co.nz](http://omaramatop10.co.nz)



It's November  
The fish are jumping  
Put up that gone fishin' sign  
The Ahuriri is the place to be!

Book a cabin or motel  
or come camping  
and explore our big backyard.

**Omarama TOP 10 Holiday Park**

# **The weather that was @ 44°29'29.4"S 169°58'19.7"E**

## **October 2017**

**Apologies, technical problems prevent us from  
bringing you last month's temperatures**

**Most rainfall: October 25, 6.5 mm**

**Total rainfall for October: 16.5mm**





# The FAQs - Those Five Awkward Questions with...



**What is one of your favourite things?**

*Springtime - Carla*

*When the weather warms up and the hills turn green - Scott*

**What is one lesson you learned at school that you have never used?**

*Algebra - Carla*

*Sewing - Scott*

**Tell us something about Omarama we might not know?**

*There are some big changes planned for the*

*dog trial club grounds - watch this space!*

**If you could time travel where would you go?**

*Forward two years when the children will be at school - Carla*

*Back to when I was 18 , with no responsibilities - Scott*

**What is one thing you would tell your 16-year-old-self?**

*Never marry a dog triallist - My mum told me never marry a dog triallist ( Carla is the daughter of seasoned Palmerston campaigner Lloyd Smith.)*

*Don't piss your money against the wall - Scott*

---

## The View from the Chook House



At least for 'Bird of the Year' we got to vote and know who won!

*(with thanks to  
Jeremy Elwood  
and TV3's Seven Days)*



# The Garden Diary - A twist of this and a dash of that

Those sun-loving Mexicans - dahlias and zinnias, are so cha, cha, cha and mardi gras vibrant, so very razzle-dazzle cheerful, sheer joy!

There is little flowering colour for so much of the gardening year in the high country, nothing at all extravagant. In this climate our sensible, refined and no-nonsense plants frown upon such unaffordable luxury. But right now even they are being a little frivolous, billowing soft green and gold against the hills and lakes, and looking just blooming lovely. We won't mention it's almost lupin time.

It's no secret I love bright colour. My first garden was bedded down in regimental lines of French marigold, lobelia, and galliardia in a strip of dusty, lifeless dirt between concrete drive and timber fence – so hot and not in that stylishly cool way, I'm sure it took the temperature into the 30s that summer.

Colour and how to work it in the garden has always been a hot topic. Screeds of theory has been written, the kind of deep analysis which sends the very earnest out, colour wheels in hand, tut-tutting at every rogue red or yellow petal.

Possibly the most famous of the English 'colour' gardens is Sissinghurst's white garden. "Could do with a twist of lemon" – someone, not me, once said. In New Zealand, in the 80s, Invercargill florist-gardener Olive Dunn debuted a black and white garden and, I believe, later decided to add a wedge of orange to that.

It can be an absorbing challenge to play with plants, colour rules and the ever-changing canvas of time. I struggle to be disciplined but luckily nature has taken me in hand. This spring I have been entranced with how the light has played on the muslin-white of self-seeded Shirley poppies which have scattered themselves among bluebells, also self-seeded, and the self-seeded lime-green euphorbia with its grey-green leaves. The only part I played in this picture was to plant bulbs of tulip 'Spring green' in autumn, never realising the annuals had decided to come to the party, albeit making for quite a conservative and 'English' gathering this spring.

I love to play with colourful annuals in pots. It's more 'finger painting' than 'Monet'. One tip which works is to match the colour of the petals of one plant to the colours of the 'eyes' of another. I think that was Beth Chatto's idea.

And not only does a twist of lemon lift white but a dash of spice – red – John Constable-style, will always draw the eye. Mellow undertones of jazzy blues add a perfect base.

The one element which pulls all together is leaf colour - the many shades of green, grey and plum hold the picture year round until they decide it is their moment to shine, there's no holding them back - it's autumn!

For now, I'm waiting impatiently for party time to see my new combinations explode like firecrackers in the heat - sunset-coloured dahlias, 'Evening Sun' sunflowers with nasturtium 'Mahogany' and day-glo zinnias.

Bring on summer. Let's rumba!

Ruth Grundy

*(I garden a small space under a big sky in Omarama)*



# Waitaki Auto Electrics

## The automotive electric specialists for Waitaki Operating a mobile service in Omarama and Twizel

Waitaki Auto Electrics are electrical repair experts offering a comprehensive range of services to resolve your electrical issues.

We perform auto-electrical repairs on residential vehicles like your family car and also on commercial and agricultural machinery, and marine-based transportation

### Contact us to organise a service!

With a range of services and the best products for all kinds of cars, tractors, trucks, and boats, we're sure to have a solution that will suit you.

Phone: 03 436 0046 Cell phone: 027 463 3822 Email: [waitakiautoelectric@gmail.com](mailto:waitakiautoelectric@gmail.com)



# Situations vacant

---



We are looking for trained teachers to join our team.  
Our kindergarten Moemoeā/Vision;  
*"A unique place where tamariki learning is enriched through  
diverse learning pathways".*

If you are a trained ECE or Primary teacher interested in  
relieving and/or part-time work, please contact;

**Carol Sinclair**  
**Head teacher**  
**Twizel kindergarten**  
**Ph 034350433**  
**twizel.kindergarten@xtra.co.nz**

---

## LINDIS PASS CONSERVATION GROUP

### Summer work programme 2017-2018

November 25 and 26  
December 9 and 10 - *botanical survey sub-alpine flowers*  
January 27 and 28 - *nature walk in reserve with  
Forest and Bird Association members.*  
February 24 and 25  
March 24 and 25  
April 28 and 29  
May 12 and 13

Where the weather is unsuitable on both days,  
the workday will move to the weekend following.

Details of what we do, and notices about workdays, are on  
<https://www.facebook.com/LindisPassConservationGroup/>

**Jan Kelly, secretary**  
**phone (03) 443 4337, email: ejkelly@clear.net.nz**

## Accommodation Required

Long term accommodation needed for  
new worker to the area

Phone: 03 438 9703

## The Classifieds

To advertise in this section please email [omaramagazette@gmail.com](mailto:omaramagazette@gmail.com).

Cost: Up to 25 words \$8 paid in advance. Copy must be received and payment made by the Friday before publication. Payment details will be forwarded on receipt of copy. Publication is the first Wednesday of each month.

## Omarama Playgroup Annual meeting

7pm, Wednesday, November 8

At the playgroup rooms, Omarama Community Centre

All welcome

***President: Petrina Paton 027 345 6192***

## Te Whare Mahana Twizel Cultural Centre Annual meeting

1 pm, November 18, 2017

Ohau Road, Twizel

Contact: Nicola 027 2943045

Shirley 027 4245559

***Nau Mai, Haere Mai!***

## For advertising rates and guidelines

phone 021 294 8002

or email [omaramagazette@gmail.com](mailto:omaramagazette@gmail.com)

## The Omarama Gazette

### Omarama's news delivered to your inbox

the first Wednesday of each month

To subscribe email:

**[omaramagazette@gmail.com](mailto:omaramagazette@gmail.com)**

Copyright © 2017 Omarama Gazette, All rights reserved.