



Ōmārama Gazette

October 2023

Developments in the pipeline for Ōmārama

Real Estate Agent Coralie Reid calls it the 'pinot grigio' affect. Whatever it is, there is no denying development is mushrooming at the T-junction of the Waitaki - Ōmārama- and that certain change has arrived on the back of these gale-force El Nino winds.

Work has begun on the latest subdivision - Ōmārama Airfield Ltd's Nimbus Dr development. Contractor Paul Smith Earthmoving has taken possession of the site and their work on installing infrastructure and driveways will commence shortly, Ōmārama Airfield Ltd's chairperson Clive Geddes said in the company's latest update. That work is scheduled to be completed by mid-November 2023, he said. The company has appointed Gary Sutherland, Tall Poppy, as its sales agent.

Gary, who lives in Ōmārama, has had more than thirty years in "small town real estate" in the Waitaki, Central Otago and Mackenzie Country. He's noticed things are

The new Nimbus Dr development, one of several major changes ahead for Omarama, is underway.



Developments in the pipeline for Ōmārama - continued

moving “at the T intersection of Waitaki”. He is getting enquiries out of Wanaka and Queenstown, there is a buzz about the town similar to what Twizel and Wanaka experienced 20 years ago, he said. People were attracted to Ōmārama because it still had that “village feel”.

Nimbus drive is a 12-lot subdivision built on land owned by the airfield but not needed for airfield operations. The company, which is a Waitaki District Council -controlled organisation, decided in 2021 to sell the land to build up reserves for future operations. Last month, the council decided to loan the company up to \$500,000 for the initial works to prepare the lots for sale with full repayment and interest required within two years. The company estimates the initial works will cost \$407,000. It has said the proposed sale price of \$280,000 per lot should cover mandatory costs leaving about \$140,000 per settled lot to pay back the loan.

Gary said lots one to eight would be about 700sqm and lots nine to 12, which were leg-in sections, would be about 1200 sqm.

Covenants which include non-objection to airfield activities and development, and to protect the residential character of the development would be entered on the titles and would include a 6m height restriction, Gary said.

He hoped the subdivision would get the titles before Christmas.

Another new subdivision, Ahuriri Fields, is awaiting resource consent approval and expressions of interest in the development have been invited. Coralie, consultant for One Agency, is the appointed sales agent. It is planned to offer about 40 lots over two stages, Coralie said. The majority of the sections are 700sqm, so were well suited to anyone from first home buyers to retirees, she said. There are relaxed covenants – although restricted to single storey - with no timeline to build.

Coralie said she was fielding enquiries from buyers “in all different life stages” looking to relocate from– “off farm, busy urban environments, looking for space and community”. People were “discovering Ōmārama” through friends and family.

Tall Poppy's Gary Sutherland (left) and One Agency's Coralie Reid are marketing new subdivisions in Ōmārama.



"I call it the pinot grigio effect. They come for a visit, have a wine in the sun with friends. They see it with fresh eyes and see new opportunities. "We get blasé about it [what it has to offer]." And Coralie believes there are new and different economic drivers at play in the surrounding area. "We're no longer reliant on one economy, there are more industries opening up," she said.

The most recent development – Highland Way – in the land bounded by Chain Hills Hwy, Prohibition Rd and the Ōmārama Airfield – which was launched at the end of 2021 has fully sold. That subdivision, developed by Scott and Dee-Ann Fitzgerald, was made up of 13 one hectare lots, with eight of the sites having an option to access the airfield giving buyers potential to build a small hangar and a home. Everything, particularly the airside lots "kicked off fairly quickly," Scott said. The last two sales were closed in July in the same week as the titles came through. Construction was now beginning at pace with a hangar and home one of the new builds underway, Scott said. "We're starting to see a bit of action."

And the sounds of nail guns and saws have been virtually constant as dwellings mushroom and fill the 8-lot Park Lane subdivision in the centre of town. It was presented in 2018.

The Ōmārama Gazette understands another subdivision recently granted consents for development– the 35ha Blue Water Block at Bog Roy – has sold but the buyer does not plan to go ahead with the subdivision at this time.

Last month, a 90ha block - 227 Prohibition Rd – came on the market offering rural residential zoned land with potential for development. The sale of St Thomas's Church would have also freed up land for development, progress there appears to have paused. Others who would like to subdivide their existing land have made bids through the District Plan consultation process for the zone changes to allow it.

Buyers searching for a new business in the area are also spoilt for choice. Last month both Wrinkly Rams and The Pink Glider Café were put up for sale. In August, Lake Ōhau Lodge and Snowfields went on the market and Ladybird Hill is also up for sale.



Traditional skills ensure best outcomes

There is a risk there will come a day in the not-too-distant future when the skills of blade shearers are only employed by the most resolute of high-country farmers. But then it will be a fairly sure bet that the Patterson family, and the Longslip, Ben Avon, and Birdwood runs will be right up on the list of those still employing traditional methods in the shearing shed.

At these runs, owned by Bryan and Michelle Patterson, shearing starts late in the season, beginning at the end of August, and continues for the best part of four weeks.

There are quite pragmatic reasons for choosing blades over machine shearing, Wendy Parsons, (nee Patterson) says.

Blades leave on a thicker layer of fleece but it's not just this which gives the animal better protection against late cold snaps and the shifting moods of high country spring weather.

The combs of machines tend to strip the fibre of its natural grease – lanolin - which holds in body heat.

But with fewer stations choosing to blade shear, there is not the demand there once was and those skills could die out, she says.

A quick glance down the board shows it is the older mature heads bending to pull sheep from the catching pens to the board. Contractor Terry O'Donnell says his is a freelance gang. And it's peppered with names of the sports shearing world – not just New Zealand champs but world champion blade shearers. They get their practice in on the job. Today, Terry is joined by Dion Adams, Scott McKay, Allan Gemmell, Brian Thompson and Graham Weaver. Missing is Omarama legend Ross Kelman and his almost-as-famous constant companion Patrick.

It's almost 10am and the gang has been at work since the sun rose over the yards and daylight began to filter through the open shutters and skylights setting the patina of the well-oiled timbers aglow.



In all the gang will shear 11,600 sheep over about two weeks, weather dependent Today, they're on a mission.

They're 'packing out' for the move to up to the Ben Avon shed as soon as the last clean, white merino 2-tooth heads down the chute to the yards.

However, no corners will be cut. Each of the gang is a study in concentration.

But there's still time to give a learner shearer Matt a few tips.

Matt, Graham's son, is keen to build his skills but his main role in the shed is presser.

And that also means keeping the catch pens full so there is always an animal ready for the shearer.

While the others will leave for Ben Avon shortly, Matt says he will stay behind to fill the branded fadges with the prepared wool into fat bales in readiness for shipping out.

Between sheep the shearers skilfully wield the stones to keep the blades razor smooth. Nothing must interrupt the flow of work.

But before it gets pressed the fleece must pass under other expert eyes and through other skilled hands.

It's the wool handlers and ultimately the wool classer who prepare and sort the fleece deciding what will go before the discerning buyer.

With wool prices as they are the difference between what a poorly prepared fleece and a good line can fetch is significant.

Wendy – who is wool classing – says this Longslip clip will be sorted into nine lines plus the oddments. This way the buyers can "chose their own ingredients" for the finished product.

This clip is contracted to the Devold NZ outdoor clothing brand, a brand which originated in Norway and now has a Wanaka-based outlet.

Wool classing maybe Wendy's true passion, and she's an award-winning classer at that, but she can punch above her weight as a blade shearer too.



Traditional skills ensure best outcomes

- continued

In 2021, she was described by the Otago Daily Times as “smoking the competition” when she took part in an invitational women’s blade grade at the Waimate Shears finishing 21 points and four minutes ahead of her closest competitor, former world record holder Jills Angus-Burney.

Wendy says a good classer also has to master the skill of “guest-ology” - guess psychology - to build a happy team and productive workplace.

The team; Lee Bootsma, Sylvia Ormond, Awhina Te Weehi and young Morgan Brewster are also under the tutelage of Waimate-based woolhandler and wool handling judge Dawn Ratana, who grew up immersed in the shearing and woolhandling industry.

They too work at speed, making the whole beautifully choreographed process look deceptively simple. It is testament to seasons of experience.

And, yes, although they do work in machine shearing sheds at other times, it’s the quiet rhythm and hum of a blade shed and processing fine wool that they love.

Today wool classer Hillary Tahere is cook and arrives right on time with smoko.

“This is the only shed I cook for,” she says.

And the gang obviously more than appreciate being the exceptions to her rule – the hot and savoury selection disappears in an instant.

Taking a moment over morning tea Morgan picks Dawn’s brains about what it takes to prepare a merino fleece to competition quality.

As Dawn explains the finer points which could see a novice reach the top of their class the other handlers chip in with their experiences.



At the end of the week – the weekend just passed - Dawn will judge at the New Zealand Merino Shears in Alexandra.
The Merino Shears is the opening competition of Shearing Sports New Zealand's calendar of 60 shows during the season which ends in April.
Morgan is going too.
Dawn encourages Morgan to closely observe all the competition processes, and points out that every competition like every shearing shed calls for a different set of skills depending on the owners requirements for the sale of the wool and that means the handler has to learn and adapt fast.
The 56th Waimate NZ Spring Shearing Championship is on Friday and Saturday.



Gliding season, the future looks bright

Change is in the wind as the new gliding season begins in Ōmārama.

The Ōmārama Gliding Club has appointed Wellington consultant and member of the Wellington Wairarapa Gliding Club, Brian Sharpe, as its development officer.

Brian hails from Canada but has lived in New Zealand since 1968 and worked for what was the New Zealand Dairy Board both in New Zealand and overseas.

He has signed up for a year in a voluntary capacity to help the club transition from a syndicate-type operation to more of a “full service” gliding club - one more heavily involved in training, he said.

We are on the cusp of significant change,” club chief flying instructor Gavin Wrigley said. “November will begin with an instructors’ course and that would be the start of everyday flying for the rest of the season.

“The club will be running courses aimed at various [skill] levels more or less every other week and flying in between time. There will be volunteer instructors and ground crew here every day until February.

“Previously there have been big paid crews using the airfield and we haven’t had that for the past three years.”

The club's operation would be a smaller and, while professional instructors from around the gliding world would be employed, they would not be paid, Gavin said.

“They are coming on a lifestyle holiday to New Zealand, from the United Kingdom, Germany and Denmark. There will be at least two here at a time.”

It was Brian who suggested the concept. There had been ‘summer crews’ travelling and working with other clubs for many years, he said. Some of the Ōmārama-based crew would be moving between places, both North and South Island, this season.

During the northern hemisphere winter (our summer) there were few good places to fly and Ōmārama was one of them, Gavin said.

“Ōmārama is fortunate in that we have more flying days per season than others.”

The club's aim was to encourage and train new members from all walks of life, not just the affluent few, he said.

Ōmārama Gliding Club members (from left) Milan Kmetovics, of Kahu Soaring, chief flying instructor Gavin Wrigley and newly-appointed development officer Brian Sharpe discuss plans for the season.



Stream work begins after delays

There are sounds of chainsaws and diggers at work along the normally peaceful Ōmārama Stream but no-one is complaining.

They are carrying out Environment Canterbury's stream maintenance programme which was laid out and approved by the stream ratepayers in November following the flood events of July and August last year. It is estimated the work will cost the ratepayers between \$70,000 and \$100,000, to be paid in stages over the next few years.

The initial work was to be completed before this winter. However, by July only a small amount had been done and residents along the stream from the SH8 'Wardells' Bridge to the Ahuriri River were concerned the overgrowth of willows and build up of debris could cause a repeat of flooding in the next heavy rain or snowmelt event. In August, ECan told the Ōmārama Gazette work planned for this year would be complete by the end of July.

In a statement last week, ECan said, although delayed, work would begin September 26 and would continue for about three to four weeks.

"This work will improve the river corridor and flood resilience for the Ōmārama township by removing low lying tree limbs which collect debris, removing trees which are obstructing the flow, and removing trees that have grown too large."

"A 20-tonne digger and chainsaws will be used in the area, and there will be warning signs to restrict public access. These restricted areas will change as the work progresses. The delays to date have been due to the need to ensure the operation is planned appropriately, given the scale of works and a variety of cultural and environmental interests," the ECan spokesperson said.

The Ōmārama Gazette understands ECan also had difficulty securing a contractor to carry out the work. Consultation with representatives from Central South Island Fish & Game and the local rūnanga (Te Rūnanga o Waihao and Te Rūnanga o Arowhenua) has taken place.

Trees would be placed onto a nearby property for burning and some logs would be left in the reserve area for locals to use for firewood, the statement said.

Gliding season, the future looks bright - continued

As well as a tow plane - a syndicate has bought the Fatman tow plane, OMA, and was leasing that to the club - the club also had the use of the Youth Glide New Zealand winch for launches, "drastically reducing" the cost, he said.

Youth Glide was thriving and had not long trained two of its members as instructors.

The club would be "working symbiotically" with commercial pilots Milan Kmetovics, owner of Kahu Soaring, and fellow pilot 'G' Dale. Kahu Soaring would run more advanced courses including long distance and mountain flying experiences. By taking the club courses first, people would be able to get the best out of flying with Milan, Brian said.

And it looks to be a busy season with accommodation for visiting pilots at a premium. The club had more advance bookings from members than it had seen before, Gavin said. "We have never been as busy as this before."

Water treatment plant, October update

Water Treatment Plant October update from the Waitaki District Council

"The roof for the new water treatment plant at Omarama is now in place after a few months of steady progress at the site. The new floor has also been laid, with a special non-slip coating to top things off.

A big thanks to our contractors who have weathered all conditions (rain, hail and snow!) to keep the project on track for completion in December.

"As mentioned earlier this week, the new water treatment plant will have chlorination to prevent bacteria, as well as UV and cartridge filters to prevent protozoa entering the supply."

The new water treatment plant sits at the main southern entrance to Ōmārama. Here's a quote from council's August press release.

"The building, which is starting to take shape, is being constructed to withstand severe earthquakes and the final design will also be sympathetic to the surrounding area."

And in November 2021 council assets operations manager Joshua Rendell said there would not be consultation on the location of the new plant. However;

"The site will be well screened from view and we will engage with the [Ahuriri] Community Board on building/site aesthetics."

*You can't miss it: The red coloursteel roof of Ōmārama's new water treatment plant is up.
Photo: Waitaki District Council*



Top 10 team reaps rewards

It is little more than one year since a raging Ōmārama Stream did its best to wipe the Top 10 Holiday Park from the map.

The recovery from that has been nothing short of remarkable as attested by the clutch of trophies awarded to owners Natalie and Erwin Beiboer at this year's Top 10 Holiday Park awards.

Last month, Natalie and Erwin were judged runners up to the supreme award as second best Top 10 Park in in the country. Nationwide there are 48 parks in the Top 10 group. They won the 'Largest Proportionate Club Membership Seller - Small Park' category and were also runners up in the 'Most Highly Recommended', 'Top Guest Experience (Classic Park)', and for Customer Service. The awards, which just kept on coming, were a complete surprise, Erwin said. "I'd just sat down and taken my jacket off and we were called again." The trophies sit alongside one collected at the Holiday Park New Zealand Awards in July – the ReviewPro Business Recovery Award, given in recognition of their comeback from the ordeals of the past year.

The couple bought the park in 2021 and since then have grown a family, Elora, who is 2 ½ years, and Wesley, who is four months old. Erwin said his most vivid memory of the July flood was of water rushing down the bank from the road into the reception area and wondering "where in the world is this coming from?". They had moved caravans out of the park in anticipation of rising waters but "never thought the water would come that way". Nature repeated the exercise in August.

The rebuild has been marked by frustrations trying to work with various agencies and the tangle of red tape to ensure there was not a recurrence.

But despite their baptism by fire, "or by water", the pair say they are in the business for the long term. "We enjoy what we're doing...we did this for our kids." Natalie and Erwin want them to have the option of taking over the business when they are of age.

Erwin worked as a diesel software programmer before finding his niche in the tourism and hospitality industry, running a 6,000-person hostel in his former hometown Hardenberg in the Netherlands. Natalie is a former police officer. The park has been closed twice since they took over, the first time because of the Covid-19 lockdown and the second time while repairs were made after the floods. Elora was the lockdown baby and Wesley, the flood baby. "The place was closed... there was not much else to do," the couple said, laughing. However, there looks to be not much spare time on the cards now with the park already busy with bookings for the season ahead, Erwin said.



Voluntary service honoured at awards

In what was a special honours award ceremony last month one of Ōmārama's most dedicated volunteers was acknowledged for her 25-years service as a first responder.

Ōmārama Volunteer Fire Brigade first responder Geva Innes joined the brigade on November 19, 1997 when the Ōmārama Co-Response was formed.

Fire and Emergency New Zealand Otago District manager Phil Marsh, who was joined by Fenz Waitaki group manager Mike Harrison presented Geva with her award for service which is issued by the Crown.

Mr Marsh also presented her with a pounamu toki on behalf of the Fenz board. The toki signified "leadership, bravery and mana", he said.

Geva had always been an enthusiastic member of the brigade and in the early days had "carried her own kit" and was able to do "obs etc" to pass to the emergency services on arrival. She was known for having a "great way" with patients but also having a "no-nonsense manner", he said.

He thanked Geva's family and the families of the other volunteers for their personal sacrifice, "giving up family time so their significant others can come along and do what they do". "Without that we wouldn't be able to function," he said.

Station officer Maurice Cowie was also presented with trophies to acknowledge his 50 years' service which was officially acknowledged by Fenz at an event in January.

It has been the busiest year for Ōmārama Fire Brigade volunteers since the brigade was formed 57 years ago, chief fire officer Greg Harper said.

In the past year it had responded to 129 calls.

He said he was proud to lead the team and, although small, many had said it punched well above its weight.

The United Fire Brigade Association honours were presented by Mr Harper who is also Otago Southland Provincial Fire Brigades Association senior vice president. Unfortunately, because of the UFBA requirements stipulated for musters, Geva did not qualify for a gold star – the UFBA award for 25-years' service, he said. However, she was awarded a life honorary membership and she was also presented with her 9-year bar.

Mr Harper paid tribute to her service.

"If we are doing anything at the station the first one to ask, 'What time?' or 'What do you need is Geva.'"

She is always on hand to help organise Christmas functions or catering.

"When the school cross country needs a first aider Geva is always there. If one of locals is down on their luck Geva will be on the phone to check up on them.

"Geva always has a smile on her face and her first aid bag under her arm, waiting at the gate ready to go if we are heading into the Lindis to an event."

Although, Geva was looking to step back from her role, she has trained as a victim support worker and the family connection would continue with daughter-in-law Tania, also a volunteer, who is a qualified fire fighter.

Mr Harper said, always a team player, the Maori whakataukī – proverb – "Ehara taka toa i te toa takitahi engari toa takatini, my strength is not as an individual but as a collective." summed up Geva's years of commitment.

HONOURS AWARDS 2023

25 years' service, 9-year bar and Life Honorary Membership
– First Responder Geva Innes

Firefighter of the Year - Senior Fire Fighter Peter Trusler – fire fighter of the year

Most Improved Firefighter - SFF Terry Walsh

Best Operational Support – Aaron Ferguson

Most Musters - Q.F.F. Michaela Kennedy

Co-responder of the year – Bruce Dyson (absent)

Clay Cliffs Trophy for outstanding service – Ruth Grundy

Lip-sync Trophy - Charlotte DeRosa

Fire/First Responder Bruce Dyson, 19 years: silver bar. (absent)

S.F.F. Terry Walsh, 17 years: silver bar.

Rural FF/ First Resp. Liz Komen, 17 years: silver bar. (absent)

First Resp Georgie Robertson, 11 years: silver bar. (absent)

Operational Support Paddy Galvin, 9 years: silver bar. (absent)

Op Supp/ First Resp C. Zorab-Derosa: 5yr medal.

Op Supp/ First Resp Sonya Trusler: 5yr medal. (absent)

Op Supp Aaron Ferguson: 3yr certificate.

Qualified Fire Fighter Tania Innes: 3yr certificate.

*Fire and Emergency New Zealand Otago District manager
Phil Marsh congratulates Ōmārama Volunteer Fire Brigade
first responder Geva Innes on her 25 years service.*



The Noticeboard

To have your community notice included here
email: omaramagazette@gmail.com

Thinking of you all. Wednesday was the third anniversary of the Ohau Wildfire – New Zealand's largest wildfire. The fire burned through more than 5000ha and destroyed 48 homes at Lake Ōhau Alpine Village.

Omarama, Twizel and Otematata volunteer firefighters and Omarama Police were first on the scene and managed the necessary evacuations.

To mark the anniversary the Village has a social event planned for Saturday. It will be at the new Avoca seating area in the Lake Ohau Alpine Village with alternate arrangements for inclement weather.

Residents are also marking the occasion by collecting donations for Coastguard Mackenzie Lakes which provided safety boats for the helicopters flying over the lake to fill monsoon buckets to fight the fire.

Network Outage: Network Waitaki has a planned power shutdown for Quailburn Dr; St Cuthbert Pl; Clay Cliff Ln; Black Peak Rd and Ahuriri Dr between 8.30am and 4.30pm on Tuesday, October 17. Treat all wires as LIVE - power supply could be restored at any time. For any enquiries please call 03 433 0065.

Congratulations to Sam Patterson from all of us on your 21st birthday, last month.

Cheers to Gavin and Mandy Wills whose garden featured in a recent New Zealand Gardener.

Special thanks: To the amazing ladies of Ōmārama who made truffles for my (Ruth's dad) 90th birthday celebrated in August' in Dunedin. They were beautiful and the thought behind it even more so. Thank you very much. You helped to make it the great day that it was. - *David Coulter*.

The Ōmārama Gliding Club is at present collating a list of available accommodation for visiting pilots and clients. If you have short term accommodation available we invite you to add your details to this list which will be displayed on our website. To action this, please phone or email your details to Pam Harding, 027 413 6045 or pamharding8@gmail.com

Age Concern coffee afternoons in Ōmārama from 1pm to 3pm at the Ōmārama Community Centre on the second Tuesday of each month.

Kurow Medical Centre Ōmārama Clinic at the Ōmārama Community Centre, is open Thursdays, 8.30am to 12.30pm. To make appointments for all clinics, order repeat scripts or make enquiries please contact Kurow Medical Centre 03 436 0760 (Monday to Thursdays). www.kurowmedicalcentre.org.nz

The Ōmārama Community Library is open 9.30am to 11am, Wednesdays and Saturdays. Library hours can change. Contact Yvonne: 027 476 7473.

The Ōmārama MenzShed Group meets each Saturday at 10am and at other times too. For further information please contact Malcolm Cameron 022 476 2225

St Thomas' Ōmārama Church Community:

chairperson: Ven Dr Michael Godfrey, phone 022 342 9977 or email Dylanfreak@gmail.com; committee secretary (Presbyterian): Rev Lee Kearon, phone: 021 250 1060 or email: lee.kearon@gmail.com

The Ōmārama Golf Club Saturdays cards in 12.30pm, tee-off 1pm.
Club captain Adrian Tuffley phone: 027 347 8276 www.omaramagolfclub.co.nz

The Ahuriri Community Catchment Group meets once a month. For time and place contact facilitator Nicola McKerchar. Phone: 022 612 7570; email: committee@ahuriricatchment.com

The Upper Waitaki Young Farmers Club meets at 7.30pm on the first Monday of each month at the 'Top Pub' - the Blue and Gold pub, in Kurow. All welcome. Join the Facebook group.

Ōmārama Playgroup meets at 9.30am each Wednesday during the primary school term at the Ōmārama Community Centre. For more information phone president Nic McKerchar 022 612 7570 rn.mckerchar@hotmail.com or secretary Tarsh Bell 027 349 0016 tomandtmarsh@mchoney.co.nz

Bridge Club - The Ōmārama Bridge Club meets on a regular basis and would welcome new members. If you are interested please phone Sylvia Anderson 438 9784 or Ann Patterson 438 9493.

The Ōmārama Model Aircraft Club meets on Saturdays from 9.00 am to 12.00 noon at its flying ground at the Ōmārama airfield. All welcome - Contact Don Selbie on 027 435 5516.

FENZ Ōmārama Volunteer Fire Brigade meets 7pm each Wednesday and has its meeting at 7:30pm on the third Wednesday of the month. New members welcome.

A gentle exercises and social afternoon group meets at the Otematata District Club at 1.30pm Thursday afternoons. Gold coin donation and a cuppa after the exercises.

The exercises are run with the guidance of personal trainer Lauren Maree. Gold coin donation and a cuppa after the exercises. Contact Ethel Gray 03 438 7764.

Waitaki Newcomers Network: For more information about this group and to subscribe to regular updates send contact details to E: waitaki@newcomers.co.nz W: www.newcomers.co.nz F: facebook.com/WaitakiNewcomersNetwork/

Plunket Line: 0800 933 922

Ōmārama Plunket Committee: Aimee Snelgrove 022 350 5536
aimeesnelgrove@hotmail.com

Thank you to all who share your stories
and contribute in other ways to the Gazette.
We all really appreciate what you do.

**The October Issue of the Omarama Gazette
is Wednesday, November 1, 2023.**

Please submit copy
by Thursday, October 26, 2023

Reporting issues is a snap with our Snap Send Solve App

Did you know Waitaki District Council has a FREE smart phone app to help make reporting issues easy? If you spot a pothole on a local road, damage to a footpath, a water leak or any other issue that you think Council may be able to sort, then you can use this clever app to report it by taking a photo (SNAP) and sending (SEND) it to the Council (SOLVE).

The app works by identifying the location of where the photo is taken using your phone's GPS data. You can fill in a few details then hit send. A report is then allocated to the relevant Council department. *Find more info and a link to the app on our website.*



Waitaki
DISTRICT COUNCIL
TE KAUNIHERA A ROHE O WAITAKI

www.waitaki.govt.nz

Scan for more info
and app download



MILES ANDERSON ✓ FOR WAITAKI

**GET WAITAKI
BACK ON TRACK**



Authorised by Miles Anderson, 162 Anderson Road,
Southburn, RD2, Timaru

AHURIRI LINK

NEWS FROM COUNCIL & THE COMMUNITY BOARD

LET'S TALK WAITAKI

We're launching our transformative approach to public engagement with a chance to share your thoughts on our new online engagement hub, and an invitation to come along to one of the 11 Community Conversations we're holding around the district in October.

We want to find out what's important to you, what your community cares about and what makes your place unique and special.

Council is working on the next Long Term Plan and how we prioritise the projects we deliver. We're also looking at the stories that connect our people and what it means to be 'Waitaki'. We need your help to do this.

Visit www.letstalk.waitaki.govt.nz for more information, to get involved and share your ideas.

AHURIRI COMMUNITY CONVERSATION DATES:

Light refreshments provided (doors open half an hour before start time). Please RSVP to letstalk@waitaki.govt.nz for catering purposes

Kurow & Duntroon

6.30pm, Thurs 19 Oct
Kurow Community Hall

Otematata

10.30am, Sat 21 Oct (doors open 10am)
Otematata Community Hall

Ōmārama & Ōhau

2.30pm, Sat 21 Oct (doors open 2pm)
Ōmārama Hall



REACHING NEW HEIGHTS AT OMARAMA



The roof for the new water treatment plant at Omarama is now in place after a few months of steady progress at the site.

A big thanks to our contractors who have weathered all conditions (rain, hail and snow!) to keep the project on track for completion in December.

The new water treatment plant will have chlorination to prevent bacteria, as well as UV and cartridge filters to prevent protozoa entering the supply! Good clean water for everyone.

NEW WATER FILLING STATION

We've installed a new water filling station on the Otematata - Ōmārama highway (SH83), opposite Ahuriri Drive (the same site as the existing caravan dump station).

Our filling stations are mainly provided for businesses who use large volumes of water - like roading contractors, spray contractors and water carriers. However, anyone with the right equipment can use one. Check our website for instructions on how pay and access the stations: www.waitaki.govt.nz/water-filling-stations

A reminder that fire hydrants may only be used by the NZ Fire Service and Council's maintenance contractor.



www.waitaki.govt.nz



Waitaki

DISTRICT COUNCIL
TE KAUNIHĀRA A ROHE O WAITAKI

ŌMĀRAMA AIRFIELD MAINTENANCE MANAGER

Ōmārama Airfield Ltd has a vacancy for an airfield maintenance manager. The position is seasonal with up to 120 hours work per month between late October 2023 and the end of April 2024.

Responsibilities are for the maintenance of the airfield and its infrastructure so experience with tractors, mowers and irrigation equipment is an advantage but not essential because the company will have a full induction process for the successful candidate.

Daily working hours are generally split between early morning and late afternoon in order to fit in with airfield operations.

The workload could expand to full time five days a week depending on the weather and the irrigation schedule.

There is the potential for job sharing over seven days per week.

The Ōmārama Soaring Centre operate the camping facilities on the airfield. A further 25 hours per month of work is required to maintain this area which includes the privately owned chalets.

The maintenance manager reports directly to the board of the airfield company and the chair of the Omarama Soaring Centre. The manager is expected to have a high level of self motivation and responsibility. The position is ideal for any glider pilot who wants a season of South Island soaring combined with a job.

Further information, a full job description and a sample contract are available from :

Clive Geddes

Ōmārama Airfield Limited

+64 27 229 4860

clivegeddes@xtra.co.nz



Situations vacant

Barista / Wait staff
Part or full time

Phone: Tanya 027 673 1381

Omārama Four Square is happy to advise that the long awaited repairs to the supermarket carpark are due to start Monday, October 9
– with the expectation is that this work should be completed within the week
(weather permitting).

The carpark directly in front of the store will be closed all week for this work,
so customer parking will be limited to the council public carparking both out the front
of boundary fence and on Sutherland Road.

Signed walkways for access to the store, the post boxes (and post room)
will be available.

However, the location of these may change slightly
as each stage of the process is completed.

If using the carpark in Sutherland Street – NB there will be no pedestrian walkway
access through the back gate behind the store.

This will be for deliveries/trucks and forklift access only.

*We are super excited to finally get this work done
and do acknowledge that it may be a little disruptive for a while,
so we appreciate your patience during this time!*

Regards,

Alona, Blair and the 4SQ team 😊



VALUATIONPARTNERS

MICHELLE WARD

B Com (VPM) | PG Dip Com (VFM) | ANZIV | SPINZ

REGISTERED VALUER | MACKENZIE DISTRICT

E: michelle.ward@valuationpartners.co.nz

M: 027 432 9015 **T:** 03 974 1320

W: valuationpartners.co.nz

Mackenzie District - Experienced local valuer based in Twizel



27 - 29 October 2023



Geopark Festival

Celebrating Waitaki's Treasures

Join us for a weekend filled with fun, inspirational events and activities to celebrate Waitaki's treasures.

Home of New Zealand's first UNESCO Global Geopark.

Full festival programme, visit:
www.whitestonegeopark.nz



Proudly part of the
Geopark Festival
27 - 29 Oct 2023



Become a landscape time-traveller - take a bus trip back into the ice ages

Explore geology and landforms in the Lake Ōhau area, including glacial moraines and scars of prehistoric earthquakes on the Ostler Fault. Join scientists Shaun Eaves, physical geographer at Te Herenga Waka - Victoria University of Wellington, and David Barrell, geologist with GNS Science - Te Pu Ao, on a guided bus tour. Minimal walking, suitable for all ages.

Saturday 28 October, 12.30 - 4.30pm

\$10 per person

Trip start/finish is the Ōmārama Community Hall. The bus is coming from Ōamaru. You can arrange to travel on it, or pick-up/drop-off enroute.

To book email: info@whitestonegeopark.nz

More information & full festival programme: www.whitestonegeopark.nz

The Community Reports

Ōmārama Volunteer Fire Brigade



Kia ora

Welcome to October and the spring Westerlies. I hope the 'tramp' is well pegged down.

A note to the farming community, we are in open fire season but with the strong winds we are experiencing please check the forecast and the checkitsalright.nz website before you consider lighting any sort of outside fire, including drums, and make sure all fires are extinguished before they are left unattended.

We went from an open to a closed fire season for a couple days a few weeks ago because of a high wind warning with low humidity.

But I had to stop and have a chat to a couple of people burning rubbish blissfully unaware there had been a temporary closure put in place. If they had checked the above website first they would have known. We don't want a repeat of the fire at Pukaki Downs last month.

The school holidays are coming to an end but Labour Weekend is just around the corner which means more traffic on the roads and also more cyclists about so please take care out there.

Lastly, but by no means least, a big thank you to Ōmārama MenzShed for the construction of a book trolley to house the collection of donated books outside Four Square Omarama which are available for a gold coin donation to the Fire Brigade and First Response.

Stay Safe

Greg Harper and the team at the Ōmārama Volunteer Fire Brigade

Greg Harper, Chief Fire Officer, 021 293 1171,

greg.harper@fireandemergency.nz

Facebook: /Omaramafirebrigade

'The Community Reports' is
dedicated to news
from clubs, groups and sports teams.

Contributions are welcome.
omaramagazette@gmail.com

OMARAMA GOLF CLUB



Labour Weekend Fun day Stableford Tournament

Proceeds to Omarama Fire Brigade

EVERYONE WELCOME - golfers and non-golfers
(don't be shy, come have a go and support a great cause)

Saturday 21st October 2023

Cost \$40.00 p.p.

Cards in by 12.30 p.m. Tee Off 1.00 p.m.

BBQ on course & Meal afterwards

Prizes and Raffles

Contact Greg Harper 021 293 1171. Please email your entry to
secretary@omaramagolfclub.co.nz

Omarama Golf Club

By Christine Bowman

Spring has arrived so lots of ground maintenance is underway. We have started fixing the bare areas on our course due to flood damage with fresh soil and grass seed, which was kindly donated by a local business.

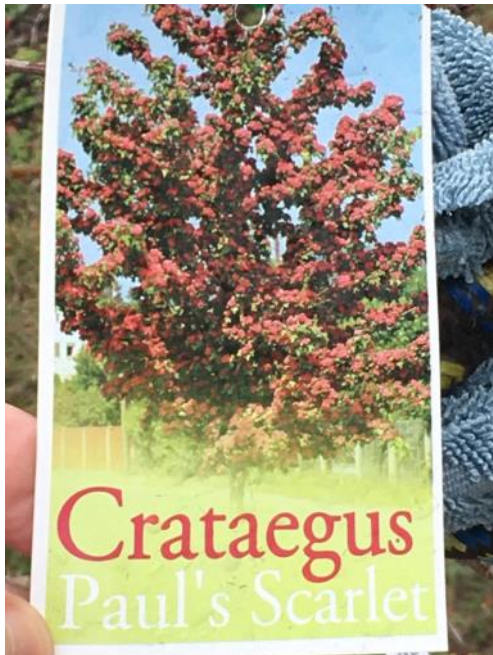
The golf club is grateful to receive a community group grant from the Waitaki District Council to allow the club to continue our tree planting program. This has enabled us to replace some trees impacted by the flood and plant new trees to add colour to enhance the beauty of the course.

During September we have planted 45 new trees thanks to our volunteers. This takes many hours of digging holes, planting, staking, mulching and watering. We have added some new varieties with *Fagus Sylvatica Purpurea* (Beech), *Ulmus Parvifolia* (Elm) and *Sorbus Hupehensis* (Rowan Tree) to name a few. We even have planted a couple of beautiful trees for one of our tee sponsors (Scarlett Hydraulics), not quite the same spelling but close enough, Paul's Scarlet (see photos below).

At Labour weekend the Ōmārama Fire Brigade are holding a fundraising golf tournament. It would be great to see locals support this fun event, everyone is welcome so come along and join in.

Now that summer is coming along, a reminder we have a couple of membership options, even for casual golfers. Just email secretary@omaramagolfclub.co.nz for details.

*Below: The highlights from this past month at the Ōmārama Golf Course.
- photos Christine Bowman*





**AGE
CONCERN
OTAGO**

Monthly Coffee Afternoon

Community Centre, 35 Chain Hills Highway,
Omarama

Guest speaker:

Rochell Fox
Living Well Centre

**Come along to be informed
about a range of assistive
products that support daily
living**

- Second Tuesday of the month
- Refreshments provided

For further information:

Kathryn Bennett

P 03 434 7008

E NthOtago@ageconcernotago.co.nz



TUESDAY
10 OCTOBER 2023

1:00 - 3:00 pm

Ōmārama Airfield

An update from the Directors following their board meeting of September 17, 2023

- By Clive Geddes, chairperson.

The Year Ahead

Airfield flight operators report an increased level of enquiry and bookings to those received at this time last year which indicates a positive start to the soaring season which will officially commence on Labour Weekend.

The long range forecast is for westerly conditions to prevail and there is a reasonable expectation that the airfield will experience a higher level of activity than that undertaken last year.

The purchase of the Fatman tow plane, OMA, by a syndicate of glider pilots and the lease of that aircraft to the Ōmārama Gliding Club for operations has provided certainty for aero launching for this season and beyond. This positive contribution to the airfield is welcome and the board congratulates the syndicate and the OGC for taking this positive step to secure their operations and airfield activity.

Nimbus Drive Development.

The contractor, Paul Smith Earthmoving, has taken possession of the site and their work on installing infrastructure and driveway will commence shortly. That work is scheduled to be completed by mid November 2023.

A number of covenants aimed at retaining the residential character of the development will be entered onto these titles. A non-objection, against present and future airfield operations, provision has also been added.

Airfield User Group.

The first meeting of the User Group was held on September 17 with 12 members present and four attending on line. The group has agreed that scheduled bi- monthly meetings will be appropriate with the ability to meet between if necessary. A members communication channel is to be set up to enable issues to be addressed between meetings. The airfield Safe Operating Procedures that relate to simultaneous winch and aero tow launching are being reviewed, the trees at the 27 launch point will be trimmed now to 3m and if necessary removed in the future. The ragged windsock is to be replaced with a white banded unit and the windsock towers will be marked with white painted tires in order to increase visibility of the sock location and the sock itself.

Briefly

The board has adopted a budget for the 2023 - 24 year which does not contain any significant changes to that of the year past. It is very much a case of continuing to contain expenditure without compromising the progress that has been made over the past years in improving the standard of the runway and progressing to completion the winch launching strip.

A separate budget and cash flow has been established for the Nimbus Drive development.

Clive Geddes clivegeddes@xtra.co.nz

Richard Subtil subtil@omaramastation.co.nz

Terry Jones morganjones@xtra.co.nz

Simon Williamson simon@glenbrookstation.co.nz

Ōmārama MenzShed

You may have spotted this really style-ly bookcase outside Four Square Omarama recently. Designed and built by our inimitable Ōmārama MenzShed group, the new book trolley replaces the retro shopping trolley which used to house the collection of donated books available for a gold coin donation to support Ōmārama's emergency services. Four Square's Blair and Alona Shaw took delivery of the new unit last week. The new display attracted the eye of a discerning customer immediately. Sharnae, who stopped in town on her way north found a crafting title and gave the donations box a bit of a whirl.

The Ōmārama MenzShed meets
at 10am each Saturday
and at other times, too.

**For further information contact:
Malcolm Cameron 022 476 2225**



Coming up...

! Christmas Housie !

**All the usual fun,
plus so much more**

Date and venue to be confirmed



Ōmārama Community Garden



A special request

If you have any gardening tools or equipment around gathering dust rather than rich, deep earth and you are considering having a clear out, the Ōmārama Community Garden would greatly appreciate your donations.

We are a group of gardeners who work together to create something for everyone in our community.

The gardens are under construction behind the Omarama Community Centre and anyone is welcome to pop along and have a look, and also to put in any plants they may have ready to go in now.

Join the Facebook group: <https://www.facebook.com/groups/742877880594146>

Contact Heather Smith, 027 330 0249

Save the date...

Age Concern in Ōmārama

Mystery bus trip

Wednesday, November 15, 2023
11am to 3pm.

Pick up and drop off, bring your own lunch.
All welcome.

An indication of numbers would be appreciated

Ph/txt 027 201 2312 or 021 294 8002 to book.

Ōmārama Playgroup

Ōmārama Playgroup meets at
9.30am each Wednesday
during the primary school term
at the Ōmārama Community Centre.

For more information contact:
president Nic McKerchar 022 612 7570
rn.mckerchar@hotmail.com
or secretary Tarsh Bell 027 349 0016
tomandtarsh@mchoney.co.nz
Plunket: Aimee Snelgrove 022 350 536
aimeesnelgrove@hotmail.com

Ōmārama Community Library

The Ōmārama Community Library
is open 9.30am to 11am, Wednesdays and Saturdays,
at the Ōmārama Community Centre.

Email: omaramalibrary@gmail.com

Contact: Yvonne 027 476 7473



Ōmārama School

From the school newsletter...

Last month Ōmārama school pupils headed to Wanaka for their annual camps. One group headed to the Snow Farm and the others headed to Glendhu Bay camping ground.

The Snow Farm group walked out to the Musterer's Hut and stayed overnight, while the younger group settled into the camping ground and then visited the trampoline place and the park, concluding the day with a trip to Paradiso Cinema to watch a movie, while munching on some popcorn.

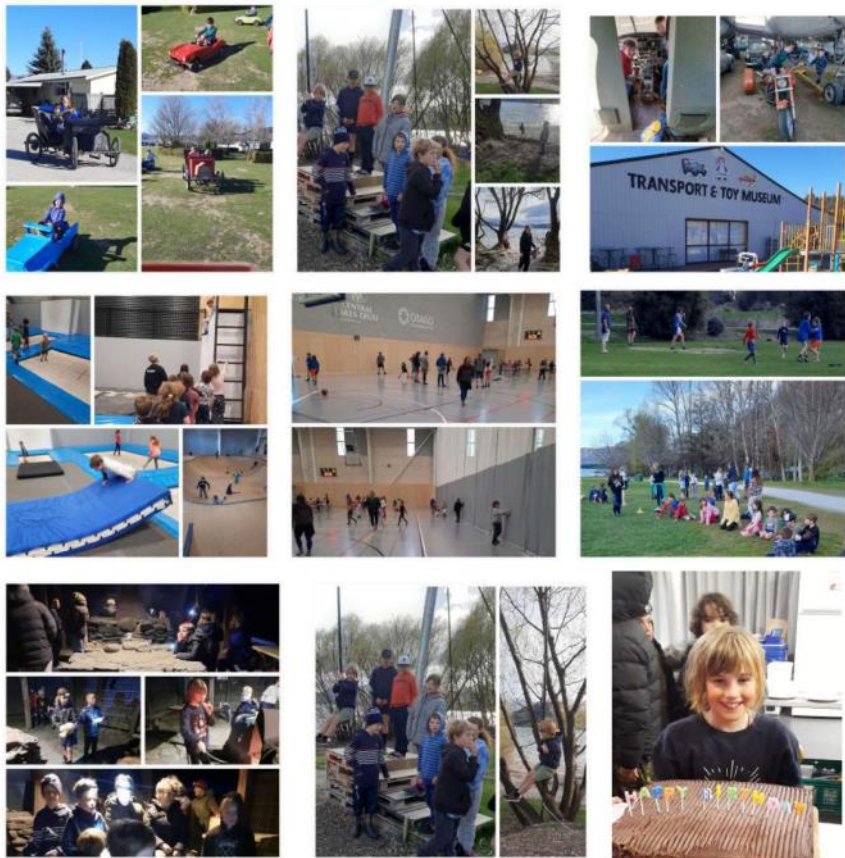
The following day the Glendhu Bay group visited the Transport and Toy Museum and met up with the senior pupils at the Recreation Centre, where we all played on the courts followed by a swim in the pool. The evening concluded with sports and a game of four colours. Shaiha's birthday was celebrated with cake and we ended the night by toasting marshmallows.

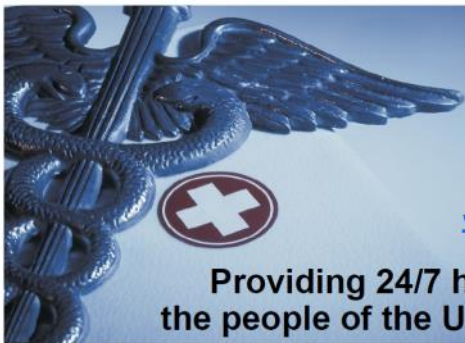
Contact details

Phone: 03 438 9815

principal@omarama.school.nz

office@omarama.school.nz





Kurow Medical Centre

8 Wynyard St, Kurow
P: 03 4360760 F: 03 4360780

E: info@kurowmedicalcentre.org.nz
W: www.kurowmedicalcentre.org.nz
www.facebook.com/kurowmedicalcentre

**Providing 24/7 health care and support to
the people of the Upper Waitaki and Mackenzie**

**Kurow Medical Centre and its satellite clinics
in Twizel (Mackenzie Health Centre Private Clinic)
and Omarama (Community Hall)**

are proud to offer our registered and casual patients the following services

- * Ultrasound performed by a qualified clinician (great for minor fractures, gall stones, kidney stones, heart and lung problems, foreign bodies, blood clots, detecting early pregnancy and much more!)
- * Minor surgery * Vasectomies
- * Mole checking and removal * Steroid injections * Venesection
- * Aviation, workplace and driving medicals * Botox for Wrinkle reduction
- * Workplace health screening * Counselling
- * Spirometry to diagnose asthma and COPD
- * Hearing and sight tests for adults and children * Ear syringing
- * Liquid nitrogen for warts, verruca's and skin lesions
- * Cardiovascular risk assessment and diabetic checks (funded for eligible patients)
- * Travel advice and vaccination
- * Cervical smears (funded for eligible patients)
- * Seasonal flu shots and shingles vaccine (funded for eligible patients)
- * Childhood immunisation * Before school checks
- * Postnatal and six-week baby health check

And much more!

GP consult fees: Under 14yrs Free; Adult \$45.00

Care Plus – Free to eligible patients only

We also offer the following services from external Health Care Providers:

- * Podiatry and Ear Health (Kurow only)
- * Physiotherapy, Acupuncture and Massage (Kurow and Twizel)

Opening hours

Kurow: Monday to Thursday 8.30am to 5pm and Friday mornings 8.30am to 1pm

Omarama: Thursday 8.30am to 12.30pm

Twizel: Monday, Tuesday, Wednesday, Thursday and Friday 8.30 to 5pm and Saturday 9am to 12pm

Please note: We provide 24/7 on call after hours cover by our doctors and PRIME nurses for all our registered and casual patients!

**If you require further information or an appointment, please contact us on:
For Kurow 03 436 0760 or for Twizel 03 976 0503**

-Dr Tim and Juliet Gardner

Look us up on our website or Facebook page for more information

Wellness matters

*A health column from the Kurow Medical/Mackenzie Health Centre Team
- by Fiona Chamberlain*

Daylight savings is upon us and how lovely to be able to enjoy longer days and warmer temperatures (apart from a few snowy blasts)!

Breast Cancer Awareness

October is breast cancer awareness month. Each day nine Kiwi women of all ages are diagnosed with breast cancer. That's 3,500 women a year and 25 men too. Early detection with regular mammograms can save lives and women aged 45-69 years can have a free mammogram every two years. You can self-enrol in BreastScreen Aotearoa by calling 0800 270 200 or registering online.

Screening recommendations for women outside of this age group vary and your healthcare provider can support you with more information or visit www.timetoscreen.nz

Self-examination is encouraged for all women from age 20 and is an important part of breast health awareness. Any changes like lumps, thickening, dimpling or nipple discharge should be reported to your healthcare provider.

Shingles (Herpes Zoster)

Many of us had chickenpox as a child, although there is now a vaccine for chickenpox which is given to children on the immunisation schedule at 15 months, and to some high-risk individuals or their close contacts. Shingles is caused by a virus called varicella zoster, which is the same virus that causes chickenpox.

Following chickenpox infection, the virus lies dormant in the nerves near the spine and can re-emerge later in life. Increasing age, some medications, certain medical conditions as well as emotional stress can cause the immune system to weaken which gives the virus an opportunity to reactivate as shingles. Symptoms of shingles usually start as a tingling or burning pain for two to three days and then a painful rash on one side of the body. This can be very debilitating and often leads to longer term complications.

People with these symptoms should seek advice and care as soon as possible. Clinicians can prescribe medication which is best started before the rash appears. This has been proven to reduce the duration and severity of shingles.

There is some good news on the shingles front however. A vaccine to prevent shingles is available and is free for anyone who is 65 years old (not older) and for some people with immunity problems. It is also recommended for other people aged 50 and over and a charge will apply. Find out more about vaccines at www.immune.org.nz.

Sun Smart

New Zealand sunlight can have high levels of ultraviolet (UV) radiation which can cause skin and eye damage and cancer. Our ozone layer is one of the thinnest in the world and UV index level three is enough to cause skin damage. Although it doesn't feel like it now, being sun smart all year round is important and more so heading into the warmer months. NIWA has a UV index app you can access at www.niwa.co.nz which gives localised reports.

So, until next time, stay well and cover up, slip into the shade, slop on sunscreen, slap on a hat and wrap on your sunnies – even on the cloudy days as 80% of UV radiation can get through the clouds.

Waitaki Newcomers Network

For more information about this group and to subscribe to regular updates send contact details to waitaki@newcomers.co.nz

“Welcome to Waitaki” Packs are now available from the Omarama Community Library for those who are newcomers to the district (or for you to give to someone who is).

Contact: Paula Eatherley
Waitaki Newcomers Network and Migrant Support Coordinator
waitaki@newcomers.co.nz
coordinator@waitakimulticultural.org.nz
027 325 6151 (business hours)

Annual Meeting

The annual meeting of the Omarama Residents' Association Inc
is 7pm, Thursday, October 19, 2023,
at the Omarama Community Centre
All are welcome

- Help plan new recreational facilities and fun activities for all ages
- like winter housie and our new basketball court
- Help care for our Community Centre
- Help lobby on issues we all care about - such as our First Response Unit

It's about all of us
Let's work together to make the difference

One meeting, one hour, once a month

Omarama is at the heart of what we do



To read more, enjoy more photos and watch our place 'come to life' check out our Facebook page and website.

[www.facebook.com/omaramagazette/
omaramagazette.nz](http://www.facebook.com/omaramagazette/omaramagazette.nz)

To receive email alerts between monthly editions of the Omarama Gazette sign up to our 'Local List'. Email omaramagazette@gmail.com

Thank you to all who share your stories
and contribute in other ways to the Gazette.
We all really appreciate what you do.

Justices of the Peace

JPs are available by appointment to:

- * Witness documents such as applications for citizenship
- * Certify copies
- * Take declarations, affidavits and affirmations

The service is free of charge

To make your visit quick and easy:

- * Do not sign anything beforehand
- * Do take photo identification
- * Remember to take the original as well as the copy to be certified
- * Check that a New Zealand Justice of the Peace can complete your documentation



Georgie Robertson
Omarama

03 438 9554 027 4861525



Vicky Munro
Otematata

03 438 7855 021 438745



Alona Shaw
Omarama

027 773 4214

Ōmārama Residents' Association

The next meeting will be
7pm, Thursday, October 19, 2023
at the Ōmārama Community Centre
An invitation is extended to all

Contacts:

Lindsay Purvis, chairperson, 027 438 9630

Yvonne Jones, secretary, 027 476 7473

(Minutes of the previous meetings are available from Yvonne)

THE ASSOCIATION HAS ITS OWN POST OFFICE BOX

Could all those who want to contact the association by mail,
send accounts to be paid,
or have correspondence considered at the monthly meetings
ensure it is addressed to:

The Secretary, P O Box 93, Ōmārama 9448.

The association's email address is omarama.committee@gmail.com

ŌMĀRAMA COMMUNITY CENTRE HALL HIRE

To make a booking for an upcoming event or for more
information about hall hire and availability
please contact Michelle Kitchen 027 280 5446
or email hallhire.omarama@xtra.co.nz



Care in the community

Ōmārama Community Care Group

Because all Covid 19 restrictions have been lifted and the last time the Care Group was asked for assistance was in June, the Care Group has been formally wound up. The Residents' Association of Ōmārama has agreed remaining funds be distributed to the Community Garden project and to set up a food and crop swap and share station at the Ōmārama Community Centre.

More to come...

If you are in need of any assistance please do not hesitate to contact Ruth Grundy 021 294 8002 and we can work together on options and put you in contact with those who can help or whatever will best suit you.

Age Concern

Kathryn Bennett, Waitaki Coordinator

03 434 7008; 027 4347 089

NthOtago@ageconcernotago.co.nz

Hours: Mon-Wed 9- 4.30pm / Thur- Fri 9-12.30pm

Twizel Community Care Centre

If you need any of the services listed below please contact the

Twizel Community Care Centre

Mount Cook St, Twizel

Phone: 03 435 0687

Email: twizelcare@xtra.co.nz

Open 9am - 2pm Monday - Friday

- Work and Income – assistance with applying for benefits, helping with queries regarding superannuation, and any other financial assistance you may receive. Printing and scanning of documents.
- Inland Revenue – queries regarding anything IRD related, access to forms.
- Twizel-Tekapo Community Car bookings – this is a community car that picks you up from your house and takes you wherever you need to go such as town here in Twizel or Timaru for an appointment, whatever you need. There is a cost involved depending on destinations.
- Home Delivered Meals – We have small roasts for \$10, Regular meals for \$8 and small snack meals for \$4. We can deliver to your home.
- Printing/scanning services
- Assistance with finding jobs in the area.
- Foodbank – donations, and supply people with food parcels when in need
- Any other government services – ACC, Department of Corrections, etc
- Arowhenua Whanau services – Free health clinic on the first Wednesday of each month.
- Computer/cellphone assistance – needing help with something on your computer or cellphone. Free WiFi
- Rat tests/Mask supply free of charge
- Assistance with filling in any forms or paperwork.
- Offer room hire to community groups and businesses.



For all your agricultural needs and more:

- ❖ Competitive rates on Gorse/Broom/Horehound etc
- ❖ Spraying – crops and forestry
- ❖ Bucket work – fertilising and seed
- ❖ Scenic Flights
- ❖ Pest Control
- ❖ Fire lighting and fighting
- ❖ All Lifting/mustering/hunting requirements
- ❖ Search and Rescue



Phone Matt 027 227 8256
Email: info@csihelicopters.co.nz

Mitchell Laughton

Rural & Lifestyle Specialist

I have an extensive knowledge of the rural sector & I am dedicated to providing you with the very best service for your real estate needs. Call me today on 027 351 8118 or email mitchell@ljhoamaru.co.nz, I'm ready to assist.

 **LJ Hooker** Oamaru

Robertson Real Estate Limited MREINZ - Licensed Real Estate Agent REAA 2008



BigSky
Bed & Breakfast

Kay & Hank Verheul
10 Ahuriri Drive, Omarama, New Zealand

Phone +64 3 438 9538
Mobile 027 489 5149

Email kay@bigskybnb.co.nz
www.bigskybnb.co.nz

 **Coralie Reid**
ONE AGENCY
THE PROPERTY SPECIALISTS



LICENSED AGENT

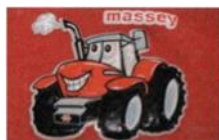
021 919 089

coralie.reid@oatps.nz



Licensed REAA 2008

www.coraliereid.nz



David O'Neill Contracting Ltd
Omarama

Home 03 438 9883
Cell 027 433 5523 Fax 03 438 9891
davidoneillcontracting@xtra.co.nz

Scarlett
hydraulic technology

For all your hydraulic requirements

Sales, service, design,
hose fittings & spare parts
97 Racecourse Rd, Washdyke.
Phone 03 688 2902
www.scarlett-hydraulics.co.nz

**For advertising rates
and guidelines**

phone
021 294 8002
or email
omaramagazette@gmail.com

BigSky
MOTEL

Your Hosts Kay & Hank Verheul

52 Ahuriri Drive Omarama
03 4389 538
bigsky.kiwi.nz



T & J Golder Ltd
Omarama

Travis 021 710305

For all your excavation
needs give us a call!
Landscaping,
Farm work, Building
sites and more.

Team Karan & Jess



The power of the team.
Based in Twizel, only 20
minutes away and ready
to help with all of your
real estate needs,
when & where you need it.

Karan MacDiarmid

0275177959

karan@mcre.co.nz

Jess Mackay

0279025529

jess@mcre.co.nz



Mackenzie Country Real Estate Ltd Licensed REA (2008)



FROM LABOUR WEEKEND

Open: Wednesday to Sunday

Hours may vary, please check our Facebook page
Dinner bookings available by reservation, please

Phone: Tanya 027 673 1381





Gary is proud to be covering the Waitaki Valley - with **over three decades in the Real Estate industry** in the Waitaki, Central Otago and Mackenzie Country, using the traditional real estate model.

Living in Omarama, Gary is proud to offer New Zealand's **#1 FREE marketing package** and **fair flat fees**.

With one centralised national office, we keep overheads low and savings where they belong - in your pocket!

Thinking of selling? **Call Gary today.**



Gary Sutherland

Business Partner & Sales Consultant

027 432 6615

gary.sutherland@tallpoppy.co.nz



When circumstances beyond your control lead to a rural business crisis be it financial, climatic or personal the Rural Support Trust is ready to assist. Services are free and confidential.

0800 RURAL HELP (0800 787 254)

The weather that was @ 44°29'30.1"S 169°58'20.3"E

September 2023

Highest temperature: September 20, 23.1C

Lowest temperature: September 26, -2.5C

Most rainfall: September 21, 15.5 mm

Total rainfall for September: 50.8 mm

The Ōmārama Gazette

Ōmārama's news delivered to your inbox
the first Wednesday of each month

To subscribe email:

omaramagazette@gmail.com

Copyright © 2016 -2019 Omarama Gazette, All rights reserved.